

REVISIONS				
ECN	REV	DESCRIPTION	DATE	APPROVED
-	A	NEW RELEASE	1/13/2022	SPJ

RECOMMENDED MINIMUM CLEARANCES:
 FRONT: 36 IN. [914]
 REAR: 0 IN.
 SIDES: 0 IN.
 TOP: 18 IN. [457]

WEIGHT:
 1600# [726kg]

HEAT DISSIPATION:
 4800BTU/hr [1405W]

NOTES:

- Front access only required for operation and servicing. Use nominal clearances for back and sides of cabinet.
- See Sheet 2 for details of external features.
 - Leveling feet locations as shown. (Swivel base with 3/4 in. wrench across flats.)
 - Leveling feet may be extended 0.5 in. above cabinet base. (0.3 in. for leveling feet in upward position as shown.)
 - Swivel caster maximum extension of rotations is 5.0 in. radially from the centerline of the leveling feet as shown.
- See Sheet 3 contains a descriptive index of parts
- See Sheet 4 for details of internal features, cable I/O landing locations, and recommended connections.
- Floor skirts to ship separately and to be field installed. All necessary hardware is included.
- See the One Line Electrical Diagram for further details.

Copyright © 2018, LayerZero Power Systems, Inc.

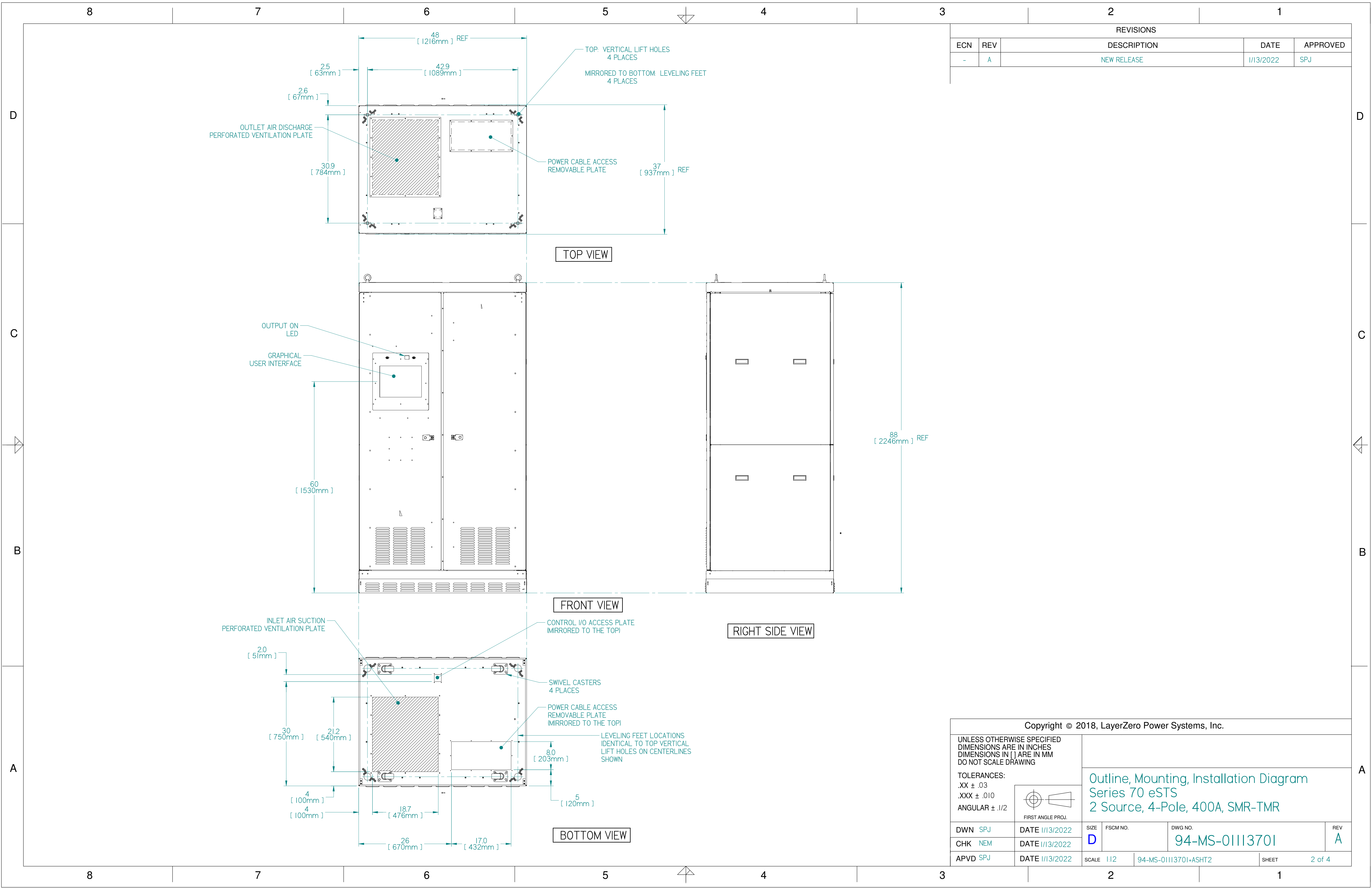
UNLESS OTHERWISE SPECIFIED
 DIMENSIONS ARE IN INCHES
 DIMENSIONS IN [] ARE IN MM
 DO NOT SCALE DRAWING

TOLERANCES:
 .XX ± .03
 .XXX ± .010
 ANGULAR ± .1/2

FIRST ANGLE PROJ.

Outline, Mounting, Installation Diagram
 Series 70 eSTS
 2 Source, 4-Pole, 400A, SMR-TMR

DWN SPJ	DATE 1/13/2022	SIZE D	FSCM NO.	DWG NO.	REV A
CHK NEM	DATE 1/13/2022	94-MS-01113701		94-MS-01113701	
APVD SPJ	DATE 1/13/2022	SCALE 1:10	94-MS-01113701-ASHTI	SHEET	1 of 4



REVISIONS				
ECN	REV	DESCRIPTION	DATE	APPROVED
-	A	NEW RELEASE	1/13/2022	SPJ

Copyright © 2018, LayerZero Power Systems, Inc.

UNLESS OTHERWISE SPECIFIED DIMENSIONS ARE IN INCHES DIMENSIONS IN [] ARE IN MM DO NOT SCALE DRAWING

TOLERANCES:
 .XX ± .03
 .XXX ± .010
 ANGULAR ± .1/2

FIRST ANGLE PROJ.

Outline, Mounting, Installation Diagram
 Series 70 eSTS
 2 Source, 4-Pole, 400A, SMR-TMR

DWN SPJ	DATE 1/13/2022	SIZE D	FSCM NO.	DWG NO. 94-MS-01113701	REV A
CHK NEW	DATE 1/13/2022	SCALE 1/2		94-MS-01113701+ASHT2	SHEET 2 of 4
APVD SPJ	DATE 1/13/2022				

8

7

6

5

4

3

2

1

REVISIONS				
ECN	REV	DESCRIPTION	DATE	APPROVED
-	A	NEW RELEASE	1/13/2022	SPJ

D

D

C

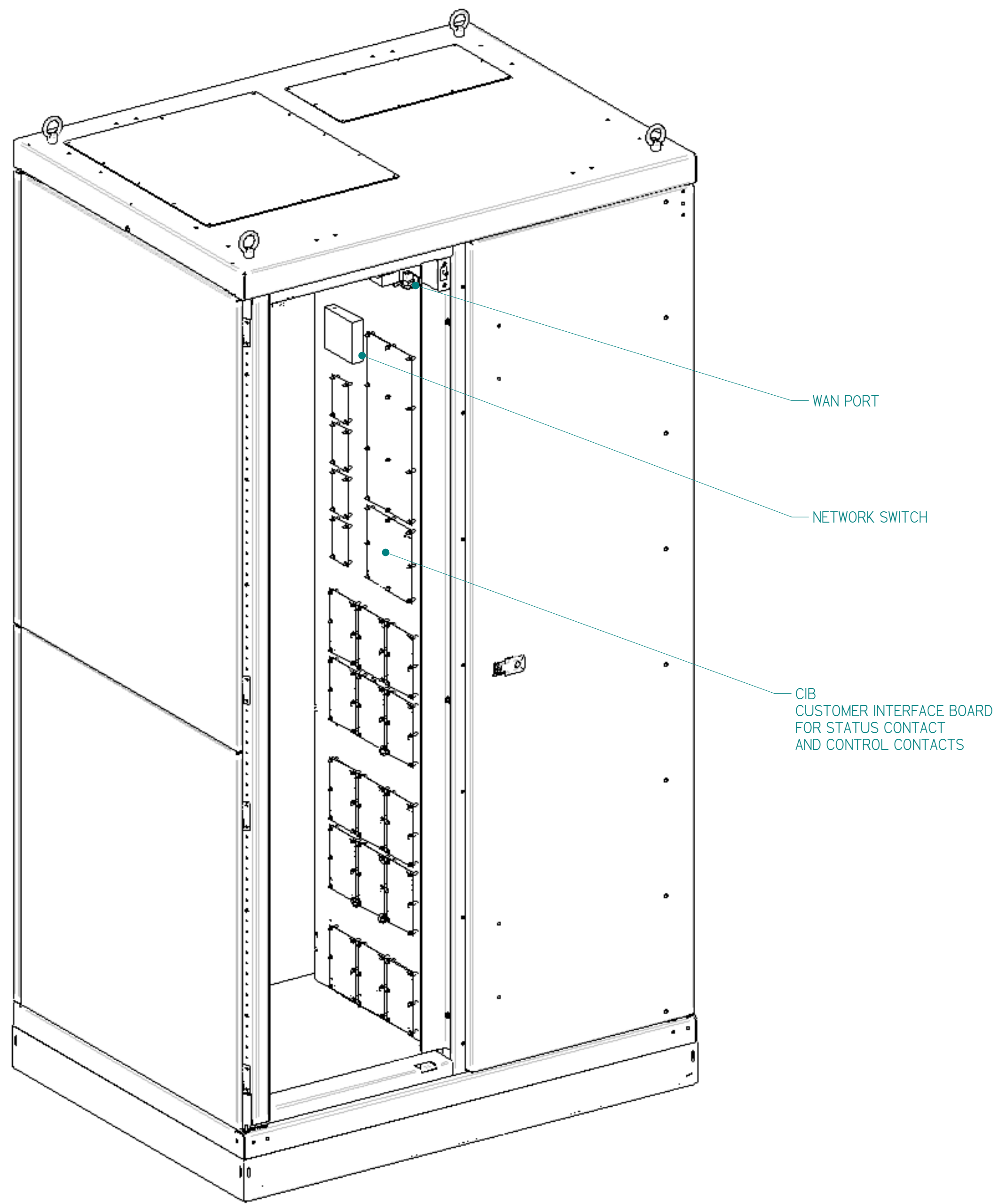
C

B

B

A

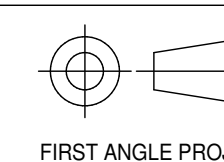
A



Copyright © 2018, LayerZero Power Systems, Inc.

UNLESS OTHERWISE SPECIFIED
DIMENSIONS ARE IN INCHES
DIMENSIONS IN [] ARE IN MM
DO NOT SCALE DRAWING

TOLERANCES:
.XX ± .03
.XXX ± .010
ANGULAR ± .1/2



Outline, Mounting, Installation Diagram
Series 70 eSTS
2 Source, 4-Pole, 400A, SMR-TMR

DWN	SPJ	DATE	1/13/2022	SIZE	FSCM NO.	DWG NO.	94-MS-01113701	REV	A
CHK	NEM	DATE	1/13/2022	SCALE	1/2	94-MS-01113701+ASHT3	SHEET	3 of 4	
APVD	SPJ	DATE	1/13/2022						

8

7

6

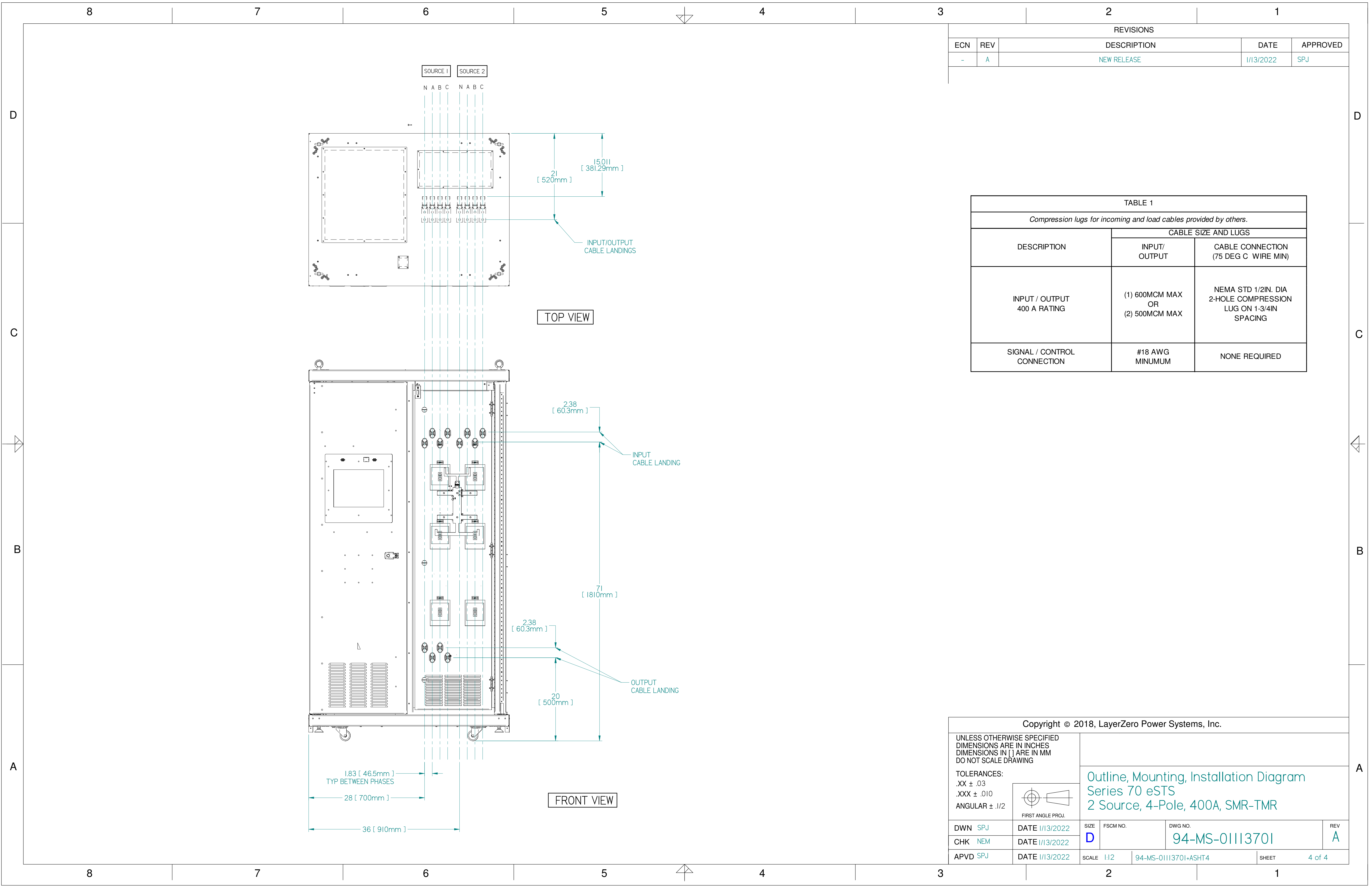
5

4

3

2

1



REVISIONS				
ECN	REV	DESCRIPTION	DATE	APPROVED
-	A	NEW RELEASE	1/13/2022	SPJ

TABLE 1		
Compression lugs for incoming and load cables provided by others.		
DESCRIPTION	CABLE SIZE AND LUGS	
	INPUT/OUTPUT	CABLE CONNECTION (75 DEG C WIRE MIN)
INPUT / OUTPUT 400 A RATING	(1) 600MCM MAX OR (2) 500MCM MAX	NEMA STD 1/2IN. DIA 2-HOLE COMPRESSION LUG ON 1-3/4IN SPACING
SIGNAL / CONTROL CONNECTION	#18 AWG MINIMUM	NONE REQUIRED

Copyright © 2018, LayerZero Power Systems, Inc.

UNLESS OTHERWISE SPECIFIED
DIMENSIONS ARE IN INCHES
DIMENSIONS IN [] ARE IN MM
DO NOT SCALE DRAWING

TOLERANCES:
.XX ± .03
.XXX ± .010
ANGULAR ± .1/2

FIRST ANGLE PROJ.

Outline, Mounting, Installation Diagram
Series 70 eSTS
2 Source, 4-Pole, 400A, SMR-TMR

DWN SPJ	DATE 1/13/2022	SIZE D	FSCM NO.	DWG NO. 94-MS-01113701	REV A
CHK NEW	DATE 1/13/2022	SCALE 1/2		94-MS-01113701+ASHT4	SHEET 4 of 4
APVD SPJ	DATE 1/13/2022				