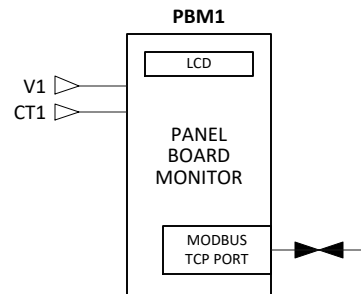
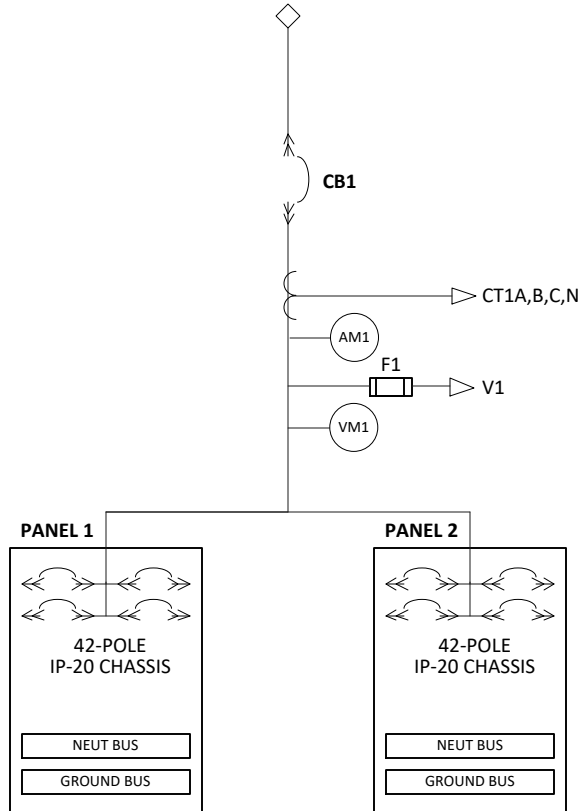


Series 70 ePanel-2

1-Input / 2-Panel / Shared Parallel (SP)

Mains Circuit Monitoring (MCM)

120/208V, 3-Phase, 4-Wire + Ground,
60Hz



INPUT TERMINALS (Two-hole Compression Lug Terminals)

PHASE RATING (A,B,C)	225A
NEUTRAL RATING (N)	400A
GROUND RATING (G)	225A

CIRCUIT BREAKER DATA

REF NO	CB1
TYPE	Thermal Magnetic Trip
RATING	400AF / 225AT, 80%
WITHSTAND	65kAIC @ 240VAC (per UL ratings)
MOUNTING	Plug-in
SHUNT TRIPS	No
AUX CONTACTS	No
MANUFACTURER	ABB
BREAKER SERIES	Tmax T5

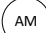



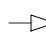
PANEL BOARD DATA

PHASE RATING (A,B,C)	225A
NEUTRAL RATING (N)	400A
GROUND RATING (G)	225A

ADDITIONAL INFORMATION:

- Neutral Monitoring
- Display Type: Advanced: 800x600 pixels, 16-bit color

LEGEND

-  CURRENT METERING POINT
-  VOLTAGE METERING POINT
-  BRANCH CURRENT MONITOR
-  PANEL BOARD MONITOR WITH ETHERNET PROVISION
-  PANEL BOARD MONITOR SENSING SIGNAL



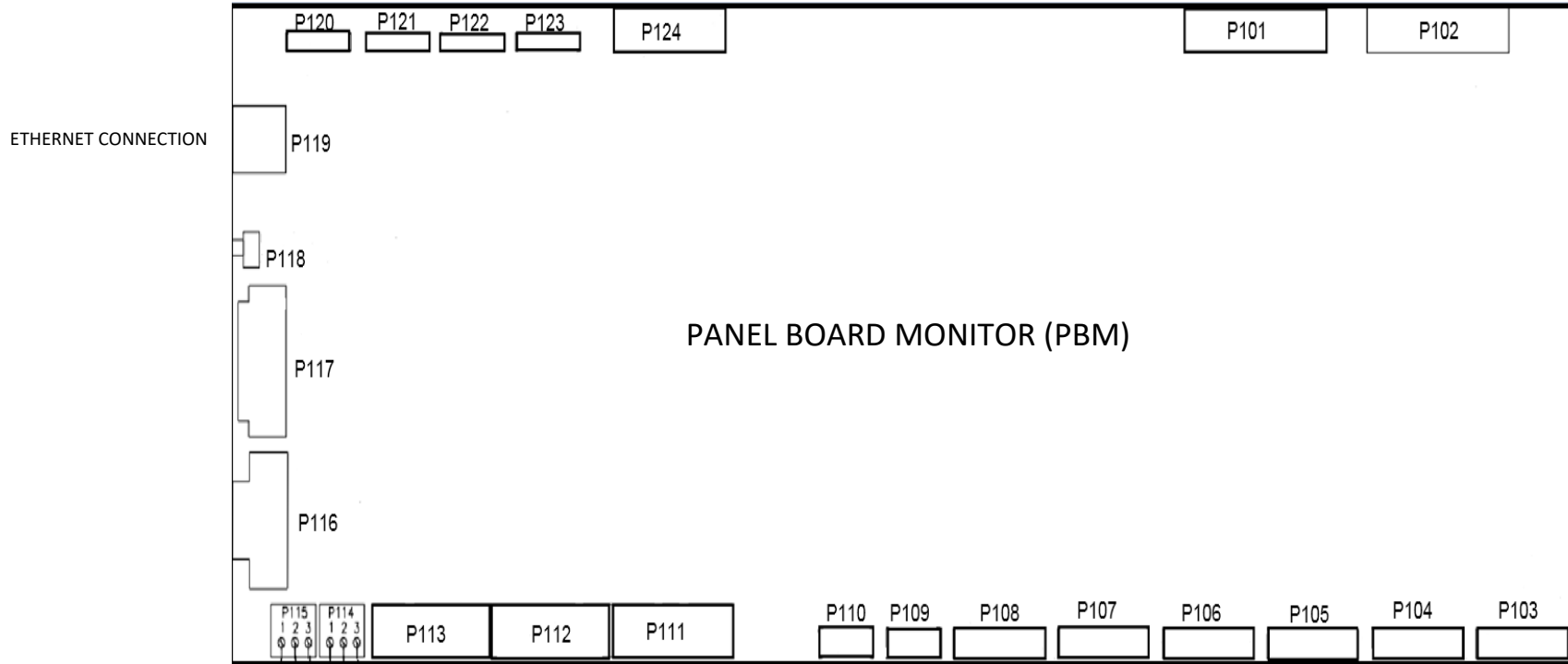
PAGE DESCRIPTION
ONE LINE DIAGRAM, ePanel-2

JOB	DRAWN	DATE 6/20/2023	DWG NO ePanel2000163	REV A
	CHK	DATE		
	APPR	DATE	SHEET 1 OF 2	

PANEL BOARD MONITOR (PBM)



SYMBOL FOR CLOSED CONTACTS



P115
SUMMARY ALARM

SUMMARY ALARM



NO SUMMARY ALARM



NOTES:

1. TERMINAL NUMBERS REFER TO TERMINALS ON PANEL BOARD MONITOR (PBM). THE PBM IS LOCATED IN THE CONTROLS/MONITORING SECTION. REFER TO THE MECHANICAL OUTLINE DRAWING FOR EXACT LOCATION.
2. TERMINALS SUITABLE FOR AWG 20-16 STRANDED COPPER WIRE. MAXIMUM ONE WAY LENGTH FOR #16: 500 ft (152 m).
3. ALL WIRING TO BE IN ACCORDANCE WITH THE NATIONAL ELECTRIC CODE AND ALL LOCAL CODES. CONTROL AND STATUS WIRING MUST BE RUN AND IN SEPARATE CONDUIT FROM POWER WIRING.
4. SUMMARY ALARM CONTACTS ARE DRY, POTENTIAL-FREE CONTACTS.
CUSTOMER REQUIREMENTS ARE AS FOLLOWS:
 - a. Open circuit voltage \leq 120 V RMS AC.
 - b. Closed circuit current \leq 1 A RMS.

		PAGE DESCRIPTION		
		ONE LINE DIAGRAM, ePanel-2		
JOB	DRAWN	DATE 6/20/2023	DWG NO	REV
	CHK	DATE	ePanel2000163	A
	APPR	DATE	SHEET 2 OF 2	