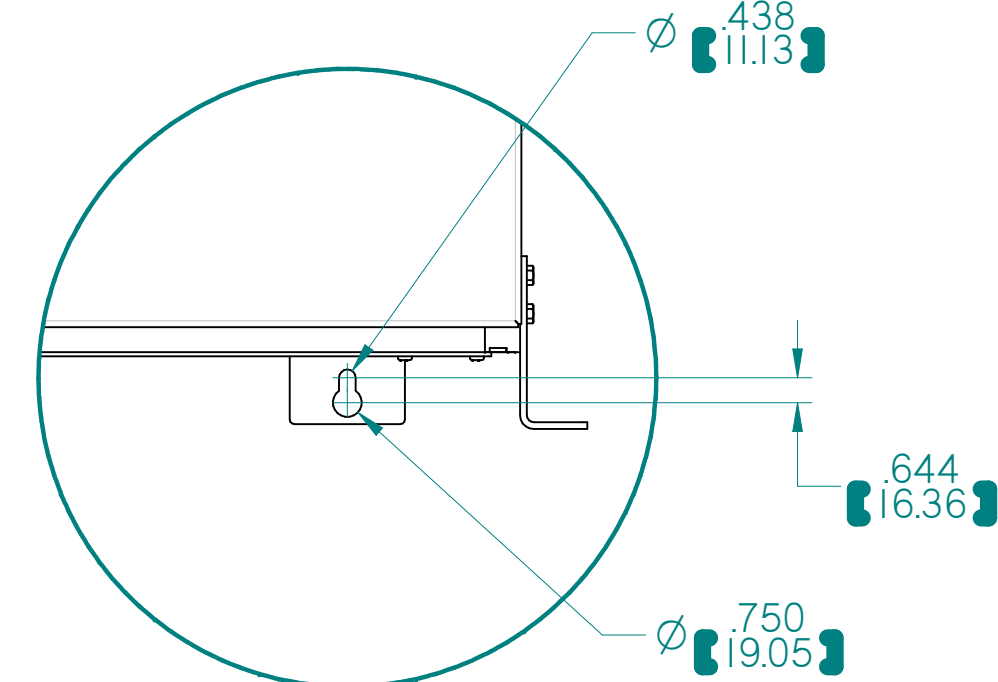
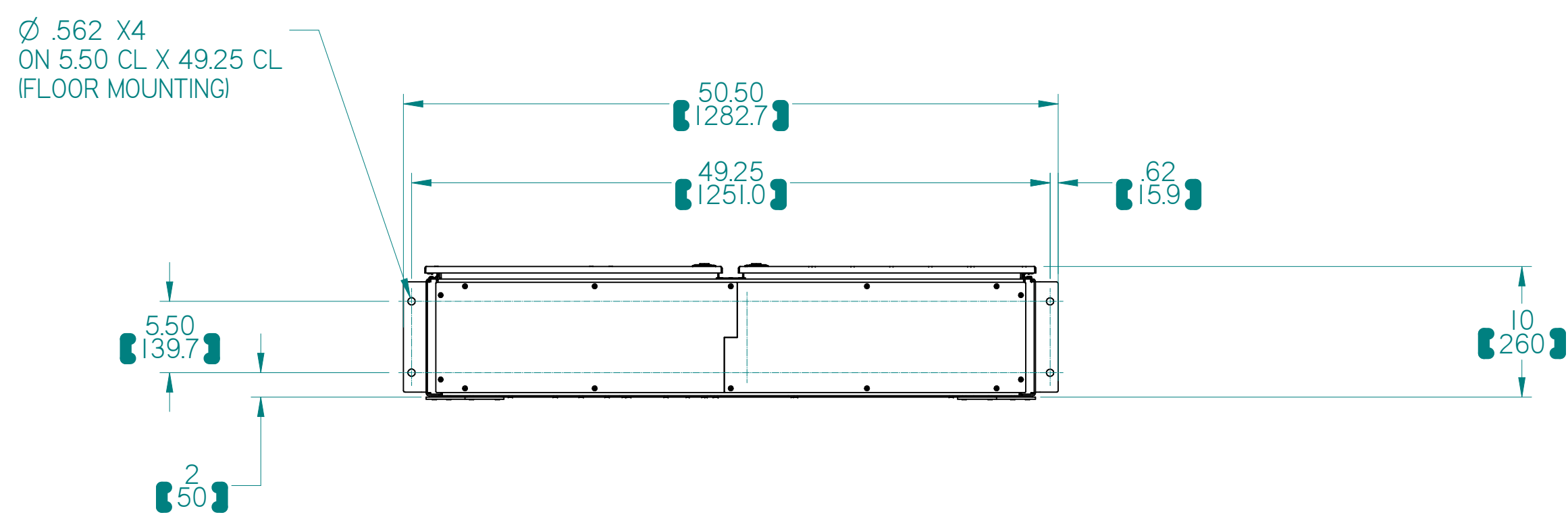
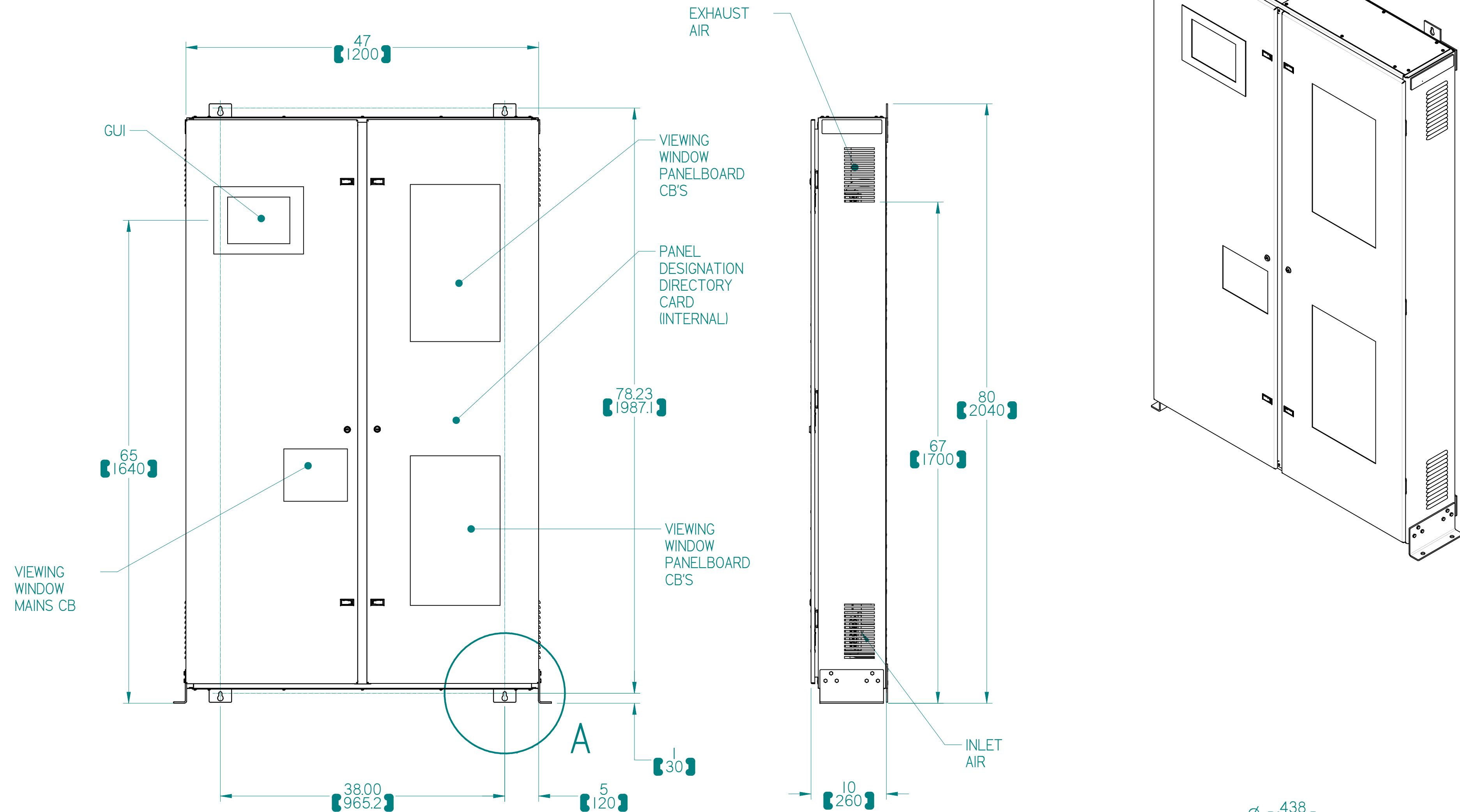


REVISIONS				
ECN	REV	DESCRIPTION	DATE	APPROVED
N/A	A	NEW RELEASE	2/24/2020	PTP



### DETAIL A

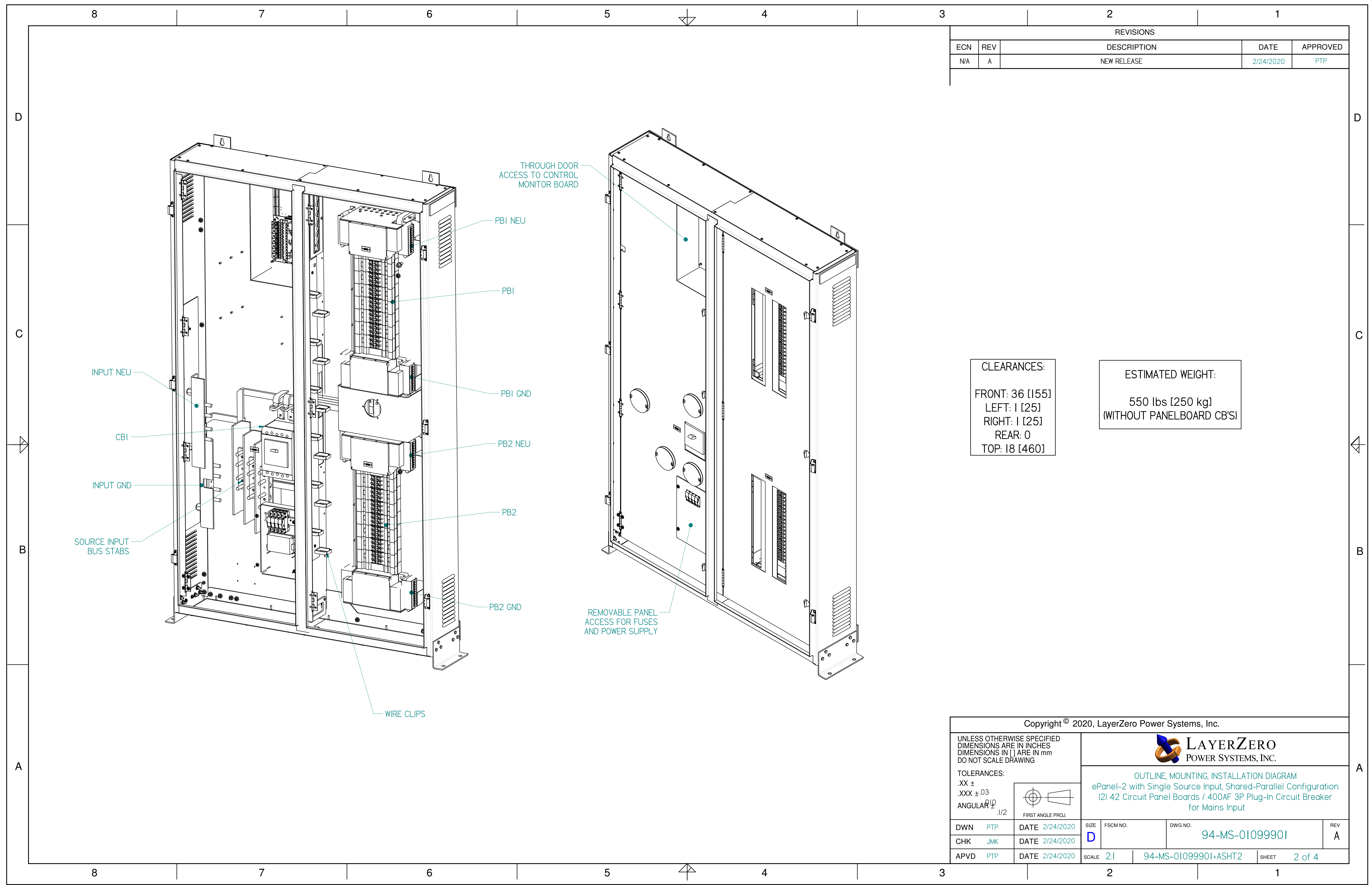
TYP., 4 PLACES AS SHOWN FOR WALL MOUNTING W/ EITHER 3/8IN OR M10 HDW

#### Notes:

1. Front access only required for operation and servicing of Primary Main Circuit Breaker and Panel Board Circuit Breakers.
2. The unit is capable of either wall mounting or floor mounting. Floor mounting provision is attached for shipment but may be removed at customers discretion if wall mount provision is utilized.
3. Removable solid access plate at the top/bottom of the cabinet for source input and panel board output.
4. Descriptive Index of internal parts shown on sheet 2.
5. Table I, recommended wire connections, provided on sheet 3.
6. Detail of internal parts and cable locations shown on sheet 3.
7. All interconnection from cable input to Circuit Breakers is factory provided.
8. See One Line Electrical Diagram for detail of components and representation of system.
9. WARNING: Allow 1 inch side clearance for proper ventilation of cabinet.

Copyright © 2020, LayerZero Power Systems, Inc.				
UNLESS OTHERWISE SPECIFIED DIMENSIONS ARE IN INCHES DIMENSIONS IN [ ] ARE IN mm DO NOT SCALE DRAWING				
TOLERANCES: .XX ± .XXX ±.03 ANGULAR ±.1/2				
OUTLINE, MOUNTING, INSTALLATION DIAGRAM ePanel-2 with Single Source Input, Shared-Parallel Configuration (2) 42 Circuit Panel Boards / 400AF 3P Plug-In Circuit Breaker for Mains Input				
DWN PTP	DATE 2/24/2020	SIZE D	FSCM NO.	DWG NO. 94-MS-01099901
CHK JMK	DATE 2/24/2020			REV A
APVD PTP	DATE 2/24/2020	SCALE 1:1	94-MS-01099901+ASHTI	SHEET 1 of 4

REVISIONS				
ECN	REV	DESCRIPTION	DATE	APPROVED
N/A	A	NEW RELEASE	2/24/2020	PTP



- INPUT NEU
- CBI
- INPUT GND
- SOURCE INPUT BUS STABS
- WIRE CLIPS
- PBI NEU
- PBI
- PBI GND
- PB2 NEU
- PB2
- PB2 GND

THROUGH DOOR ACCESS TO CONTROL MONITOR BOARD

REMOVABLE PANEL ACCESS FOR FUSES AND POWER SUPPLY

CLEARANCES:  
 FRONT: 36 [155]  
 LEFT: 1 [25]  
 RIGHT: 1 [25]  
 REAR: 0  
 TOP: 18 [460]

ESTIMATED WEIGHT:  
 550 lbs [250 kg]  
 (WITHOUT PANELBOARD CB'S)

Copyright © 2020, LayerZero Power Systems, Inc.

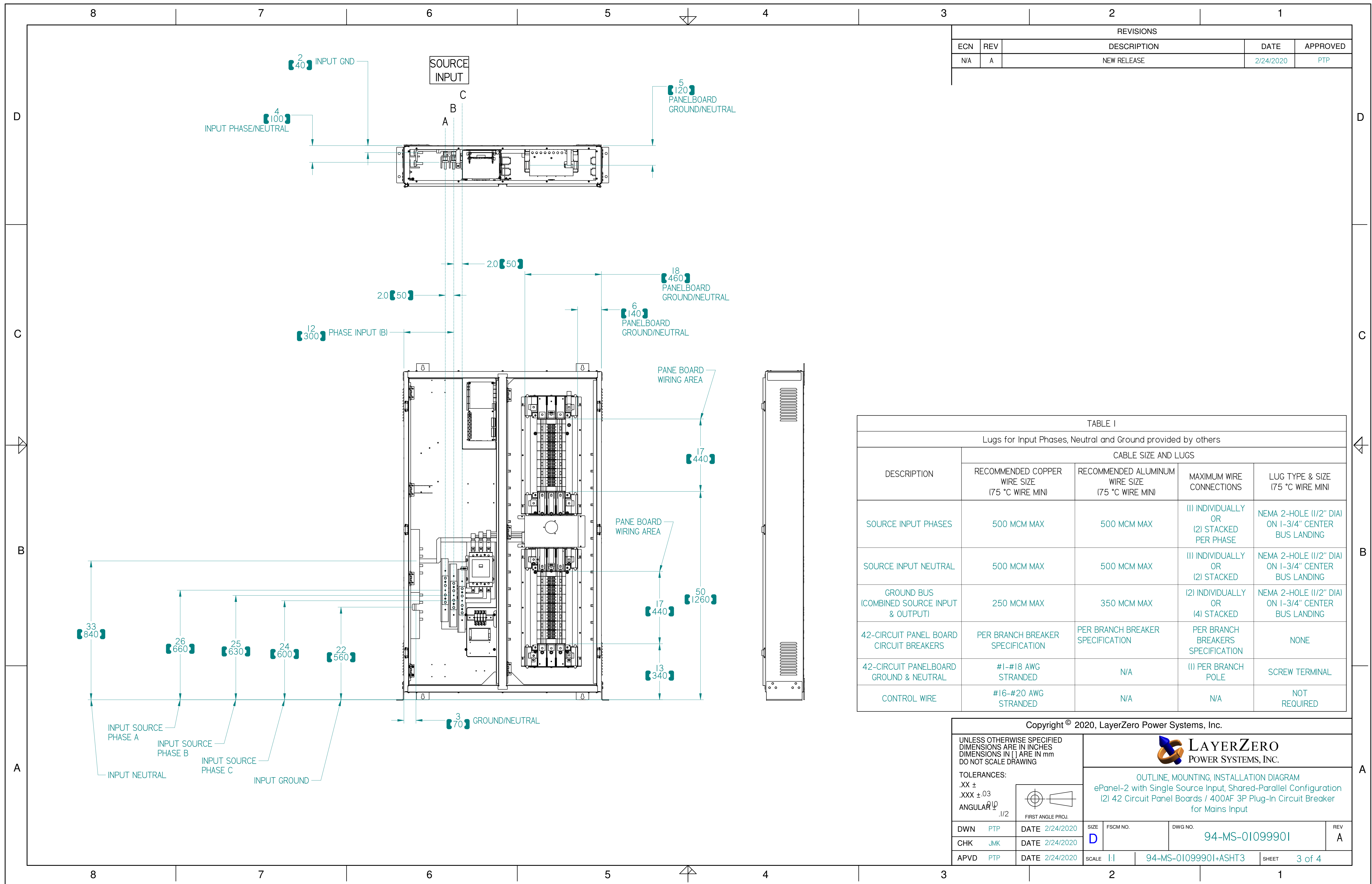
UNLESS OTHERWISE SPECIFIED  
 DIMENSIONS ARE IN INCHES  
 DIMENSIONS IN [ ] ARE IN mm  
 DO NOT SCALE DRAWING

TOLERANCES:  
 .XX ±  
 .XXX ±.03  
 ANGULAR ±.1/2

FIRST ANGLE PROJ.

OUTLINE, MOUNTING, INSTALLATION DIAGRAM  
 ePanel-2 with Single Source Input, Shared-Parallel Configuration  
 (2) 42 Circuit Panel Boards / 400AF 3P Plug-In Circuit Breaker  
 for Mains Input

DWN	PTP	DATE	2/24/2020	SIZE	FSCM NO.	DWG NO.	REV
CHK	JMK	DATE	2/24/2020	D		94-MS-01099901	A
APVD	PTP	DATE	2/24/2020	SCALE	2:1	94-MS-01099901+ASHT2	SHEET 2 of 4



REVISIONS				
ECN	REV	DESCRIPTION	DATE	APPROVED
N/A	A	NEW RELEASE	2/24/2020	PTP

DESCRIPTION	CABLE SIZE AND LUGS			
	RECOMMENDED COPPER WIRE SIZE (75 °C WIRE MIN)	RECOMMENDED ALUMINUM WIRE SIZE (75 °C WIRE MIN)	MAXIMUM WIRE CONNECTIONS	LUG TYPE & SIZE (75 °C WIRE MIN)
SOURCE INPUT PHASES	500 MCM MAX	500 MCM MAX	(1) INDIVIDUALLY OR (2) STACKED PER PHASE	NEMA 2-HOLE (1/2" DIA) ON 1-3/4" CENTER BUS LANDING
SOURCE INPUT NEUTRAL	500 MCM MAX	500 MCM MAX	(1) INDIVIDUALLY OR (2) STACKED	NEMA 2-HOLE (1/2" DIA) ON 1-3/4" CENTER BUS LANDING
GROUND BUS (COMBINED SOURCE INPUT & OUTPUT)	250 MCM MAX	350 MCM MAX	(2) INDIVIDUALLY OR (4) STACKED	NEMA 2-HOLE (1/2" DIA) ON 1-3/4" CENTER BUS LANDING
42-CIRCUIT PANEL BOARD CIRCUIT BREAKERS	PER BRANCH BREAKER SPECIFICATION	PER BRANCH BREAKER SPECIFICATION	PER BRANCH BREAKERS SPECIFICATION	NONE
42-CIRCUIT PANELBOARD GROUND & NEUTRAL	#1-#18 AWG STRANDED	N/A	(1) PER BRANCH POLE	SCREW TERMINAL
CONTROL WIRE	#16-#20 AWG STRANDED	N/A	N/A	NOT REQUIRED

Copyright © 2020, LayerZero Power Systems, Inc.

UNLESS OTHERWISE SPECIFIED DIMENSIONS ARE IN INCHES DIMENSIONS IN [ ] ARE IN mm DO NOT SCALE DRAWING

TOLERANCES:  
 .XX ±  
 .XXX ±.03  
 ANGULAR ±.1/2

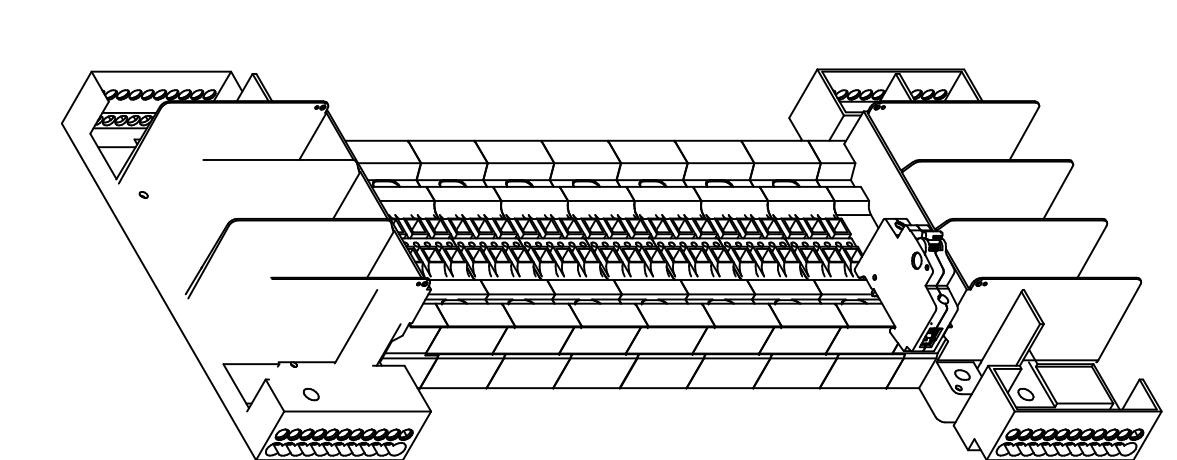
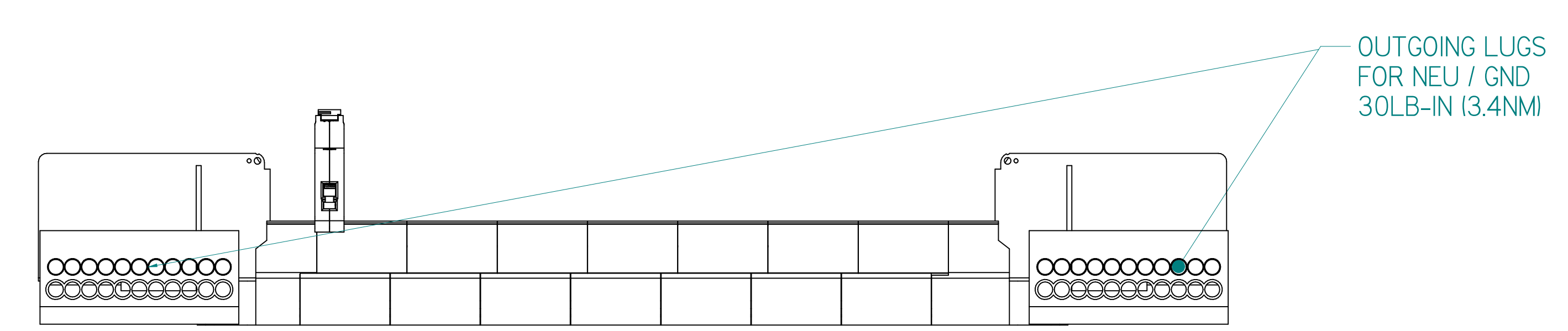
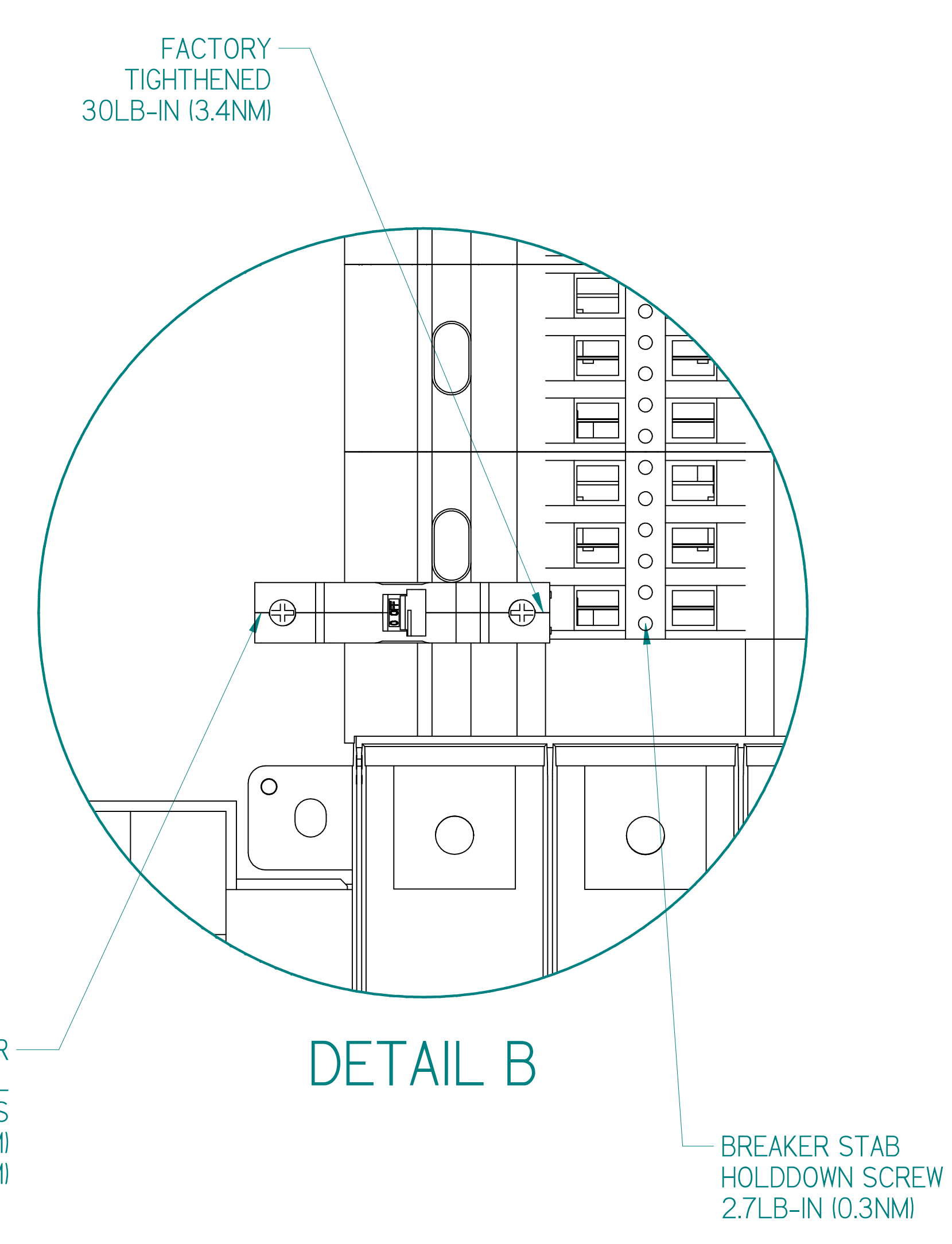
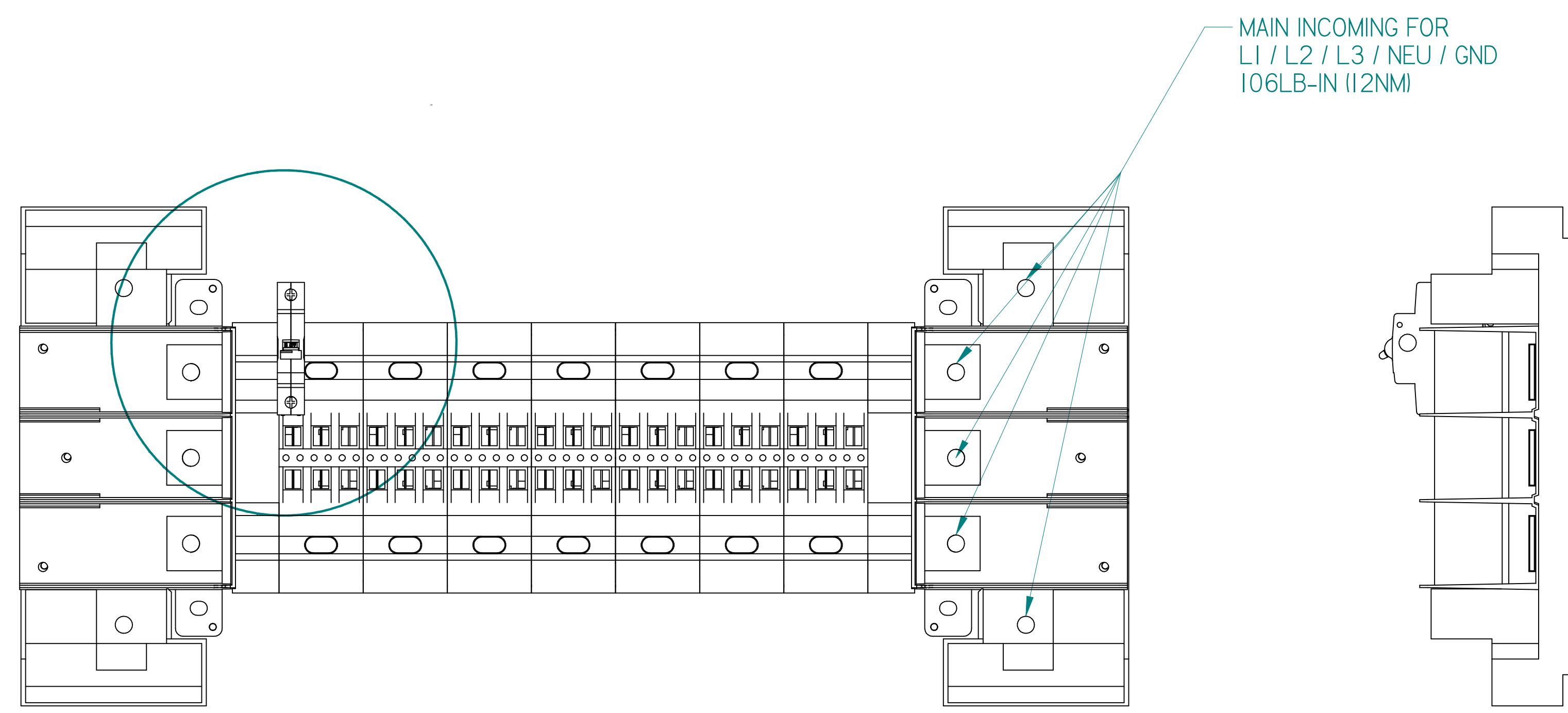
FIRST ANGLE PROJ.

**LAYERZERO**  
POWER SYSTEMS, INC.

OUTLINE, MOUNTING, INSTALLATION DIAGRAM  
 ePanel-2 with Single Source Input, Shared-Parallel Configuration  
 (2) 42 Circuit Panel Boards / 400AF 3P Plug-In Circuit Breaker  
 for Mains Input

DWN	PTP	DATE	2/24/2020	SIZE	FSCM NO.	DWG NO.	REV
CHK	JMK	DATE	2/24/2020	D		94-MS-01099901	A
APVD	PTP	DATE	2/24/2020	SCALE	1:1	94-MS-01099901+ASHT3	SHEET 3 of 4

REVISIONS				
ECN	REV	DESCRIPTION	DATE	APPROVED
N/A	A	NEW RELEASE	06/24/2013	STEVE JANKO



Copyright © 2013, LayerZero Power Systems, Inc.

UNLESS OTHERWISE SPECIFIED DIMENSIONS ARE IN INCHES DO NOT SCALE DRAWING

TOLERANCES:  
 .XX ± .03  
 .XXX ± .010  
 ANGULAR ± .1/2

FIRST ANGLE PROJ.

STANDARD PANELBOARD TORQUE DATA (42CKT SAFE PANEL)

DWN	SPJ	DATE	06/24/13	SIZE	FSCM NO.	DWG NO.	REV
CHK	AJP	DATE	06/24/13	<b>D</b>		T1100	A
APVD	SPJ	DATE	06/24/13	SCALE	1 = 4	94MDT11000	SHEET 1 OF 1