

REVISIONS				
ECN	REV	DESCRIPTION	DATE	APPROVED
-	A	NEW RELEASE	10/18/2019	DRT
-	B	UPDATED JUNCTION BOX INFORMATION & ADDED FLOOR STAND	9/24/2019	DRT
-	C	REVISED CABINET DESIGN	12/02/2019	DRT

NOTES:

1. Front access only required for operation and servicing of Primary Main Circuit Breaker and Panel Board Circuit Breakers.
2. The unit is capable of either wall mounting or floor mounting. Floor mounting provision is attached for shipment but may be removed at customers discretion if wall mount provision is utilized. The eyebolts are supplied but are removable if necessary.
3. The unit may be adapted for back to back mounting of (2) eRPP-SL2. Specify this provision at time of order for appropriate adapter supply. A back to back view is shown in detail on sheet 4.
4. Removable solid access plates at the top/bottom of the cabinet for source input and panel board output. Please specify cable Inlet/Outlet at the time of order as Junction Boxes are to be provided for connection. A bottom junction box is required, regardless of configuration. Please specify size and quantity of Conduit entry points, if any, at the time of order. A typical junction box is shown in detail on sheet 5.
5. Descriptive Index of internal parts shown on sheet 2.
6. Table of cabling input and output provided on sheet 3.
7. Detail of internal parts and cable locations shown on sheet 3.
8. An optional floor stand orientation is provided for the mounting of multiple eRPP-SL2 units per custom configuration. Details shown on sheets 4 and 5.
9. All interconnection from cable input to Circuit Breakers is factory provided.
10. The Input Mains and the PanelBoard Output are optionally monitored by an integrated Graphical User Interface. Please specify at the time of order if this option is to be provided.
11. See One Line Electrical Diagram for detail of components and representation of system.

Copyright © 2019, LayerZero Power Systems, Inc.

UNLESS OTHERWISE SPECIFIED DIMENSIONS ARE IN INCHES DIMENSIONS IN [] ARE IN mm DO NOT SCALE DRAWING

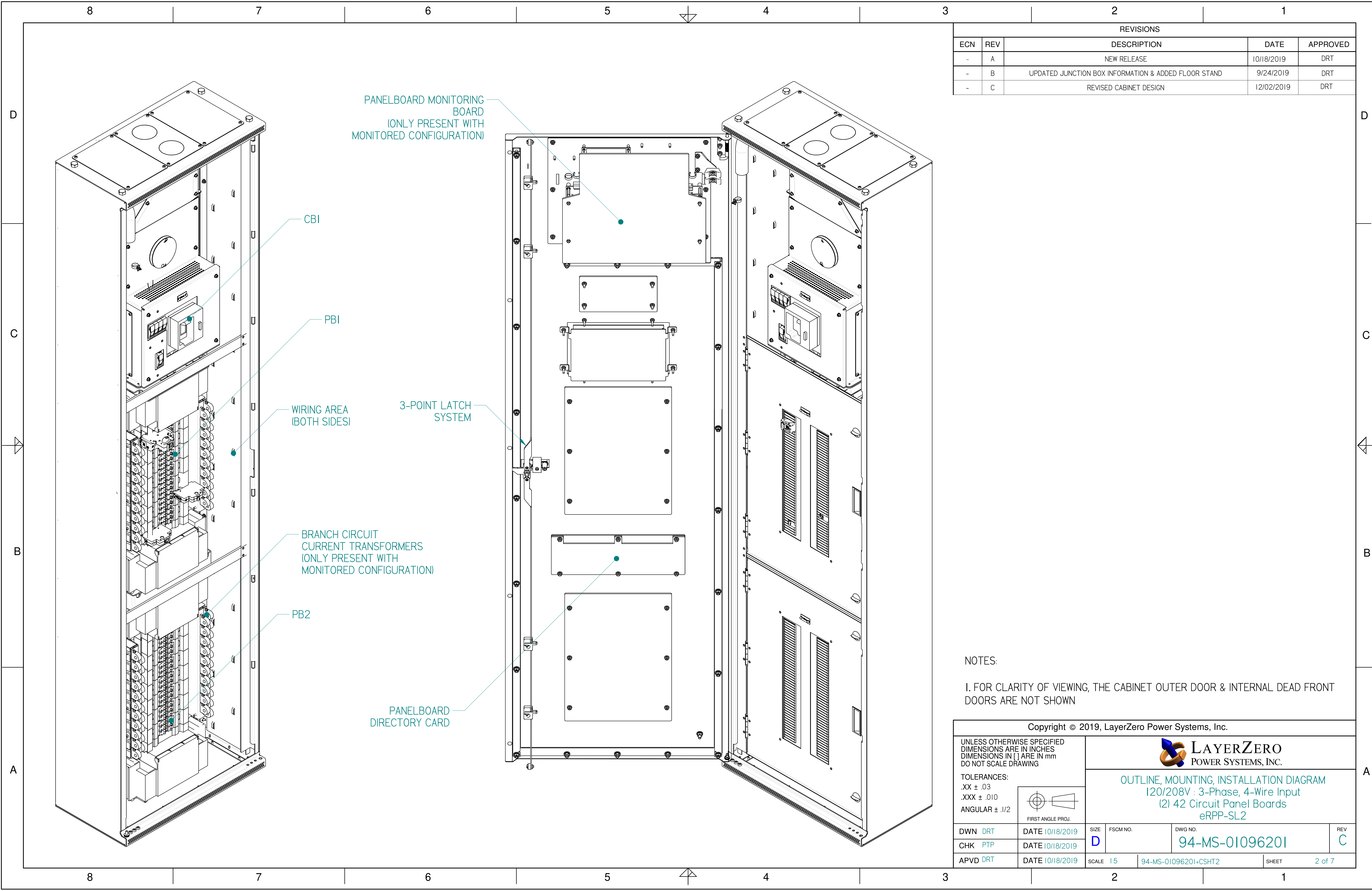
TOLERANCES:
.XX ± .03
.XXX ± .010
ANGULAR ± .1/2

FIRST ANGLE PROJ.

LAYERZERO
POWER SYSTEMS, INC.

OUTLINE, MOUNTING, INSTALLATION DIAGRAM
120/208V : 3-Phase, 4-Wire Input
(2) 42 Circuit Panel Boards
eRPP-SL2

DWN DRT	DATE 10/18/2019	SIZE D	FSCM NO.	DWG NO. 94-MS-01096201	REV C
CHK PTP	DATE 10/18/2019	SCALE 1:9	94-MS-01096201+CSHT1	SHEET 1 of 7	
APVD DRT	DATE 10/18/2019				



REVISIONS				
ECN	REV	DESCRIPTION	DATE	APPROVED
-	A	NEW RELEASE	10/18/2019	DRT
-	B	UPDATED JUNCTION BOX INFORMATION & ADDED FLOOR STAND	9/24/2019	DRT
-	C	REVISED CABINET DESIGN	12/02/2019	DRT

NOTES:

1. FOR CLARITY OF VIEWING, THE CABINET OUTER DOOR & INTERNAL DEAD FRONT DOORS ARE NOT SHOWN

Copyright © 2019, LayerZero Power Systems, Inc.

UNLESS OTHERWISE SPECIFIED
DIMENSIONS ARE IN INCHES
DIMENSIONS IN [] ARE IN mm
DO NOT SCALE DRAWING

TOLERANCES:
.XX ± .03
.XXX ± .010
ANGULAR ± .1/2

FIRST ANGLE PROJ.

LAYERZERO
POWER SYSTEMS, INC.

OUTLINE, MOUNTING, INSTALLATION DIAGRAM
120/208V : 3-Phase, 4-Wire Input
(2) 42 Circuit Panel Boards
eRPP-SL2

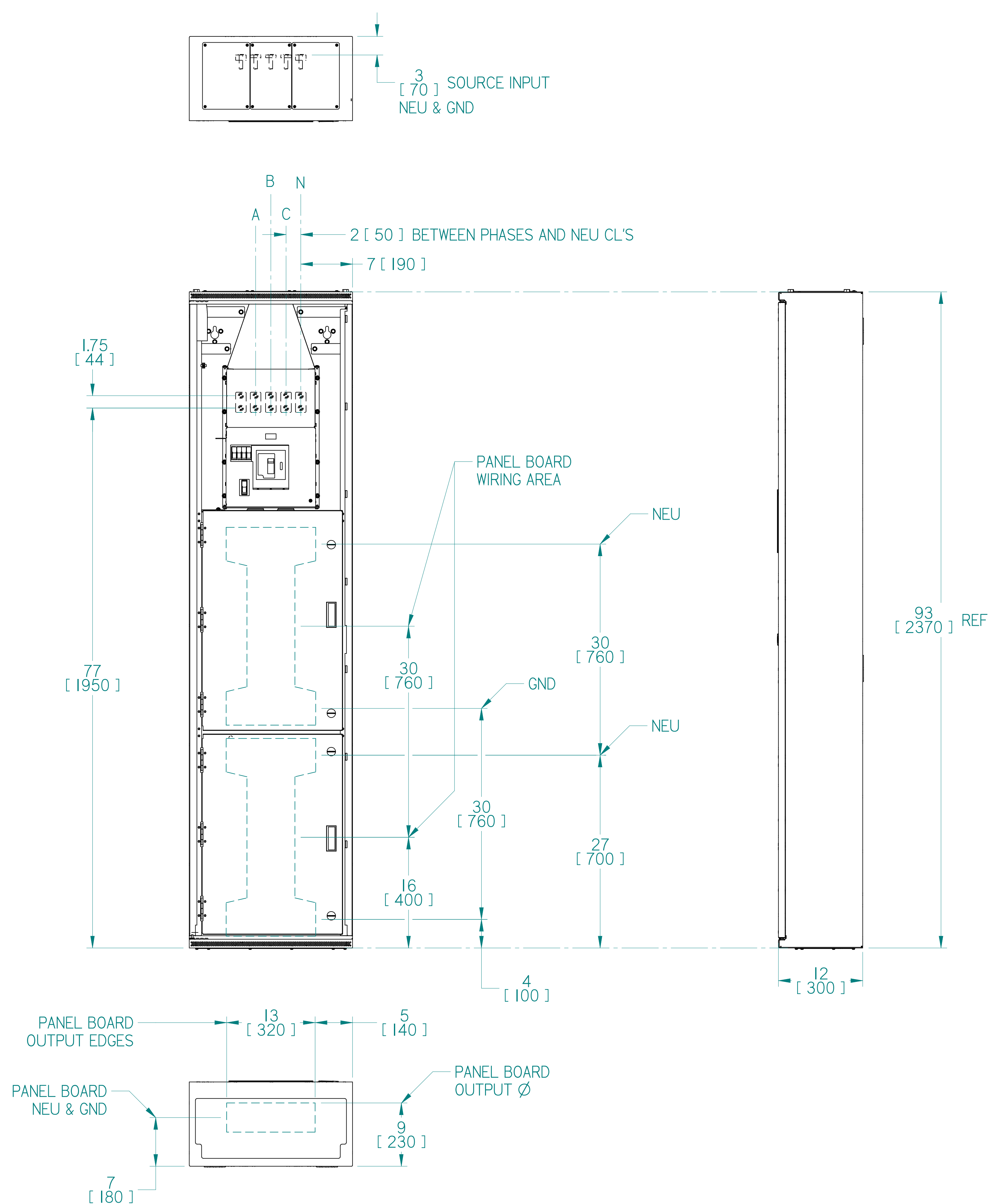
DWN DRT	DATE 10/18/2019	SIZE D	FSCM NO.	DWG NO. 94-MS-01096201	REV C
CHK PTP	DATE 10/18/2019	SCALE 1:5	94-MS-01096201+CSHT2	SHEET 2 of 7	
APVD DRT	DATE 10/18/2019				

REVISIONS				
ECN	REV	DESCRIPTION	DATE	APPROVED
-	A	NEW RELEASE	10/18/2019	DRT
-	B	UPDATED JUNCTION BOX INFORMATION & ADDED FLOOR STAND	9/24/2019	DRT
-	C	REVISED CABINET DESIGN	12/02/2019	DRT

NOTES:

- FOR CLARITY OF VIEWING, THE CABINET OUTER DOOR IS NOT SHOWN
- MAXIMUM LUG WIDTH FOR INPUT CONNECTIONS IS 1.50 [40]

TABLE I					
Compression lugs for Source Input Phases, Ground, and Neutral lugs provided by others					
DESCRIPTION	CABLE SIZE AND LUGS				
	RECOMMENDED COPPER WIRE SIZE (75 °C WIRE MIN)	RECOMMENDED ALUMINUM WIRE SIZE (75 °C WIRE MIN)	MAXIMUM WIRE CONNECTIONS	LUG TYPE & SIZE (75 °C WIRE MIN)	NOTE
SOURCE INPUT PHASES	500 MCM MAX PER SOURCE	500 MCM MAX PER SOURCE	(1) INDIVIDUALLY OR (2) STACKED PER PHASE	NEMA 2-HOLE (Ø 1/2") ON 1-3/4" CENTER BUS LANDING	2
SOURCE INPUT NEUTRAL (200%)					
SOURCE INPUT GROUND	500 MCM MAX	500 MCM MAX			
42-CIRCUIT PANEL BOARD CIRCUIT BREAKERS	PER BRANCH BREAKER SPECIFICATION	PER BRANCH BREAKER SPECIFICATION	PER BRANCH BREAKER SPECIFICATION	NONE	
42-CIRCUIT PANEL BOARD GROUND & NEUTRAL BUS	#1-18 AWG STRANDED	N/A	(1) PER BRANCH POLE	SCREW TERMINAL	-
CONTROL WIRE	#16-20 AWG STRANDED		N/A	NOT REQUIRED	



Copyright © 2019, LayerZero Power Systems, Inc.

UNLESS OTHERWISE SPECIFIED DIMENSIONS ARE IN INCHES DIMENSIONS IN [] ARE IN mm DO NOT SCALE DRAWING

TOLERANCES:
 .XX ± .03
 .XXX ± .010
 ANGULAR ± .1/2

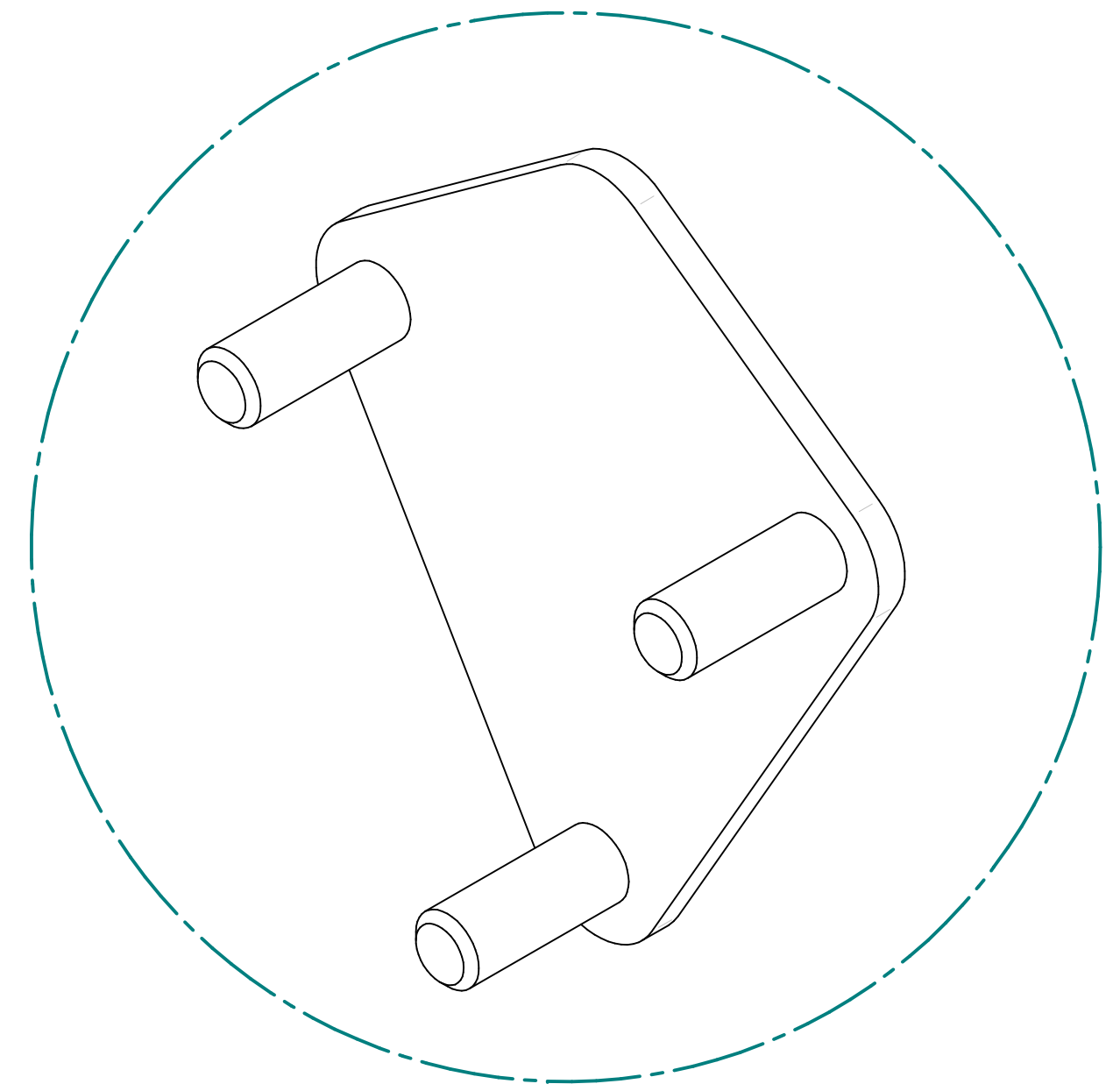
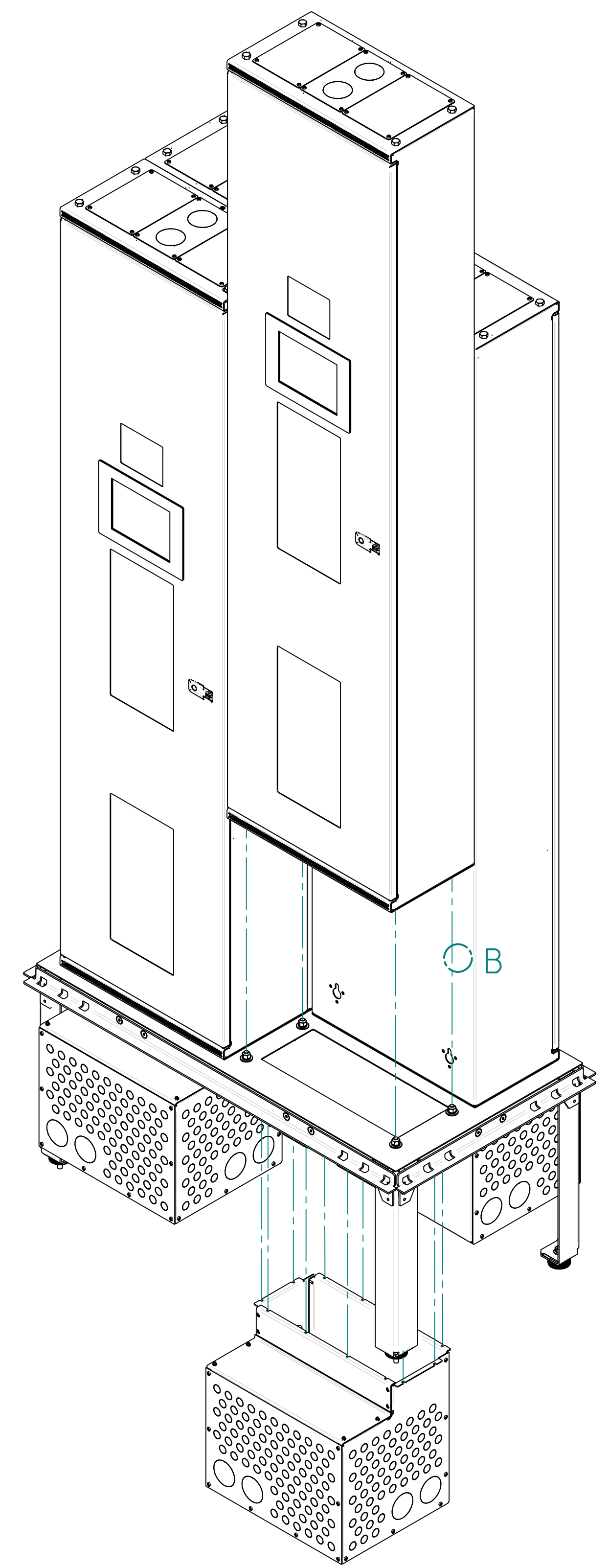
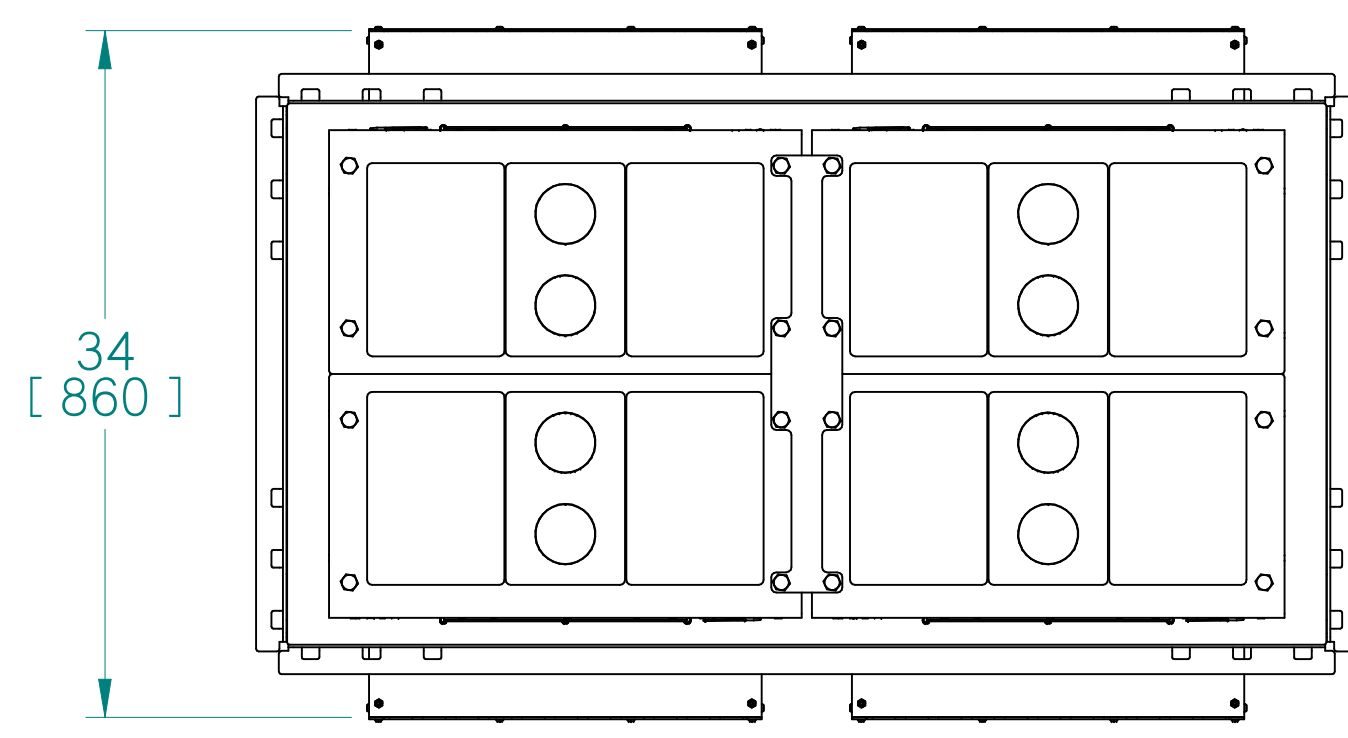
FIRST ANGLE PROJ.

LAYERZERO
POWER SYSTEMS, INC.

OUTLINE, MOUNTING, INSTALLATION DIAGRAM
 120/208V : 3-Phase, 4-Wire Input
 (2) 42 Circuit Panel Boards
 eRPP-SL2

DWN DRT	DATE 10/18/2019	SIZE D	FSCM NO.	DWG NO. 94-MS-01096201	REV C
CHK PTP	DATE 10/18/2019	SCALE 1:1	94-MS-01096201+CSHT3	SHEET 3 of 7	
APVD DRT	DATE 10/18/2019				

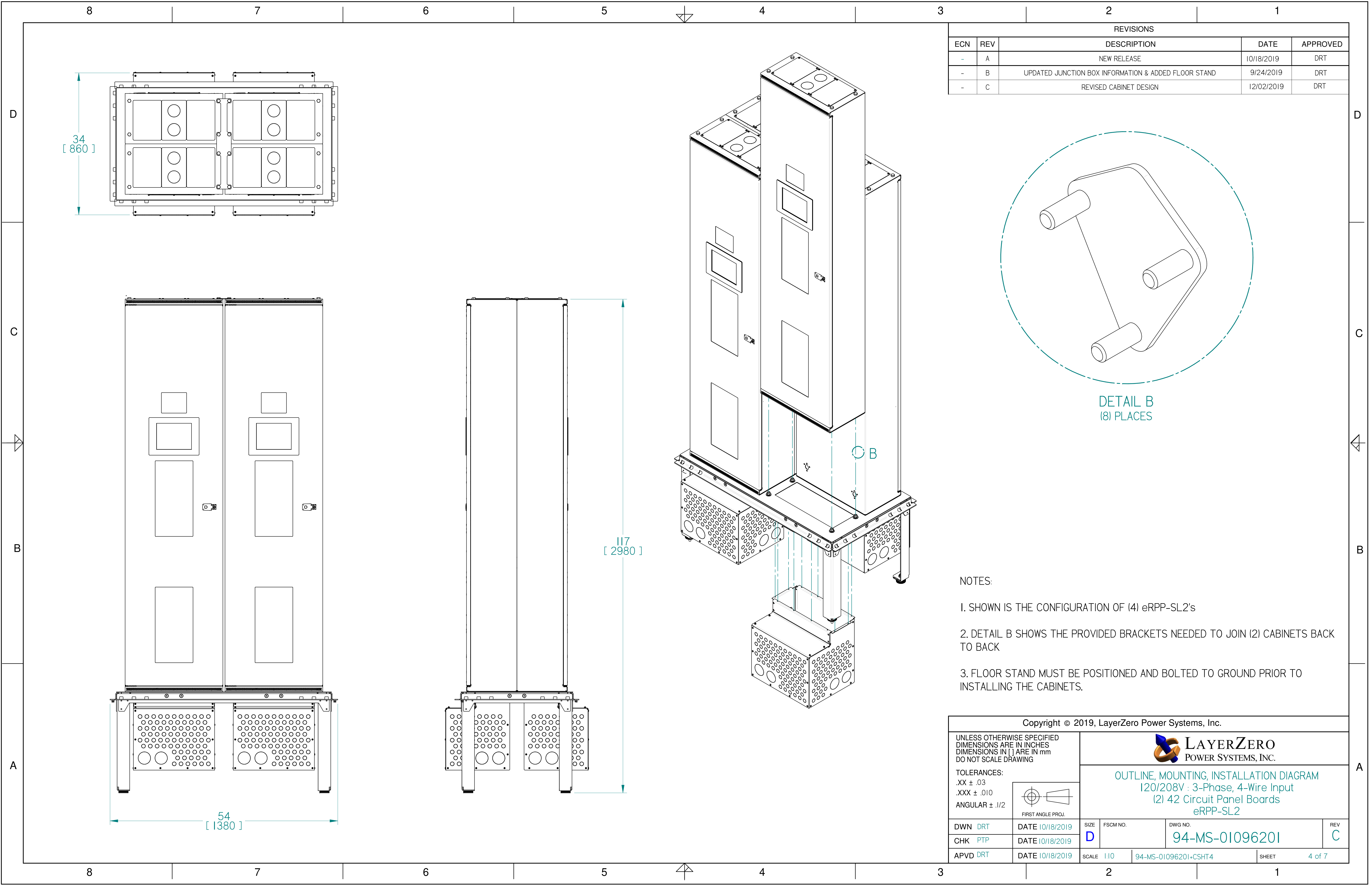
REVISIONS				
ECN	REV	DESCRIPTION	DATE	APPROVED
-	A	NEW RELEASE	10/18/2019	DRT
-	B	UPDATED JUNCTION BOX INFORMATION & ADDED FLOOR STAND	9/24/2019	DRT
-	C	REVISED CABINET DESIGN	12/02/2019	DRT



DETAIL B
(8) PLACES

NOTES:

1. SHOWN IS THE CONFIGURATION OF (4) eRPP-SL2's
2. DETAIL B SHOWS THE PROVIDED BRACKETS NEEDED TO JOIN (2) CABINETS BACK TO BACK
3. FLOOR STAND MUST BE POSITIONED AND BOLTED TO GROUND PRIOR TO INSTALLING THE CABINETS.



Copyright © 2019, LayerZero Power Systems, Inc.

UNLESS OTHERWISE SPECIFIED
DIMENSIONS ARE IN INCHES
DIMENSIONS IN [] ARE IN mm
DO NOT SCALE DRAWING

TOLERANCES:
.XX ± .03
.XXX ± .010
ANGULAR ± .1/2

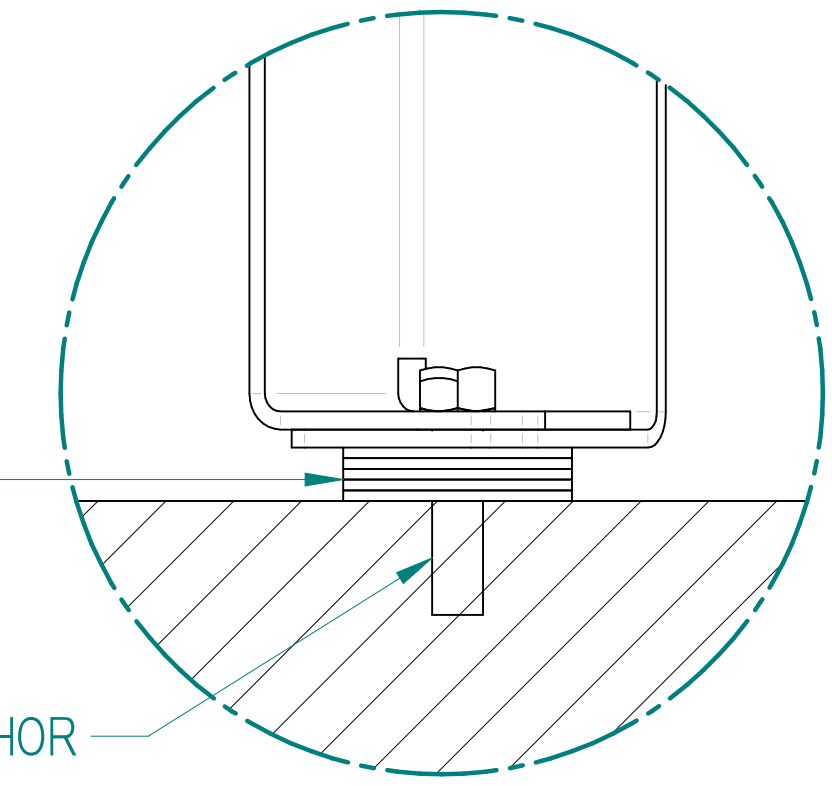
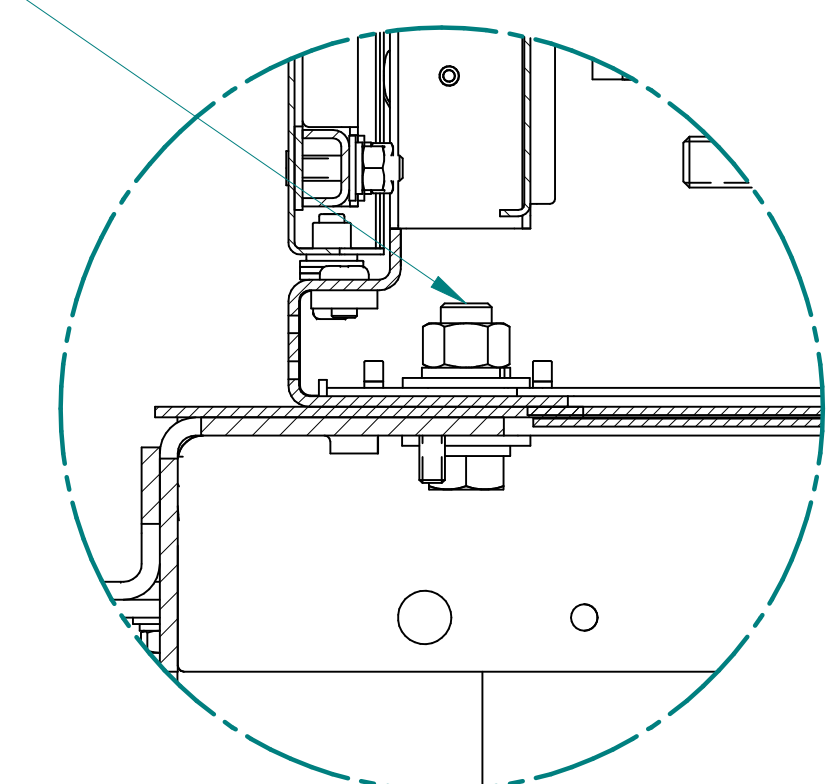
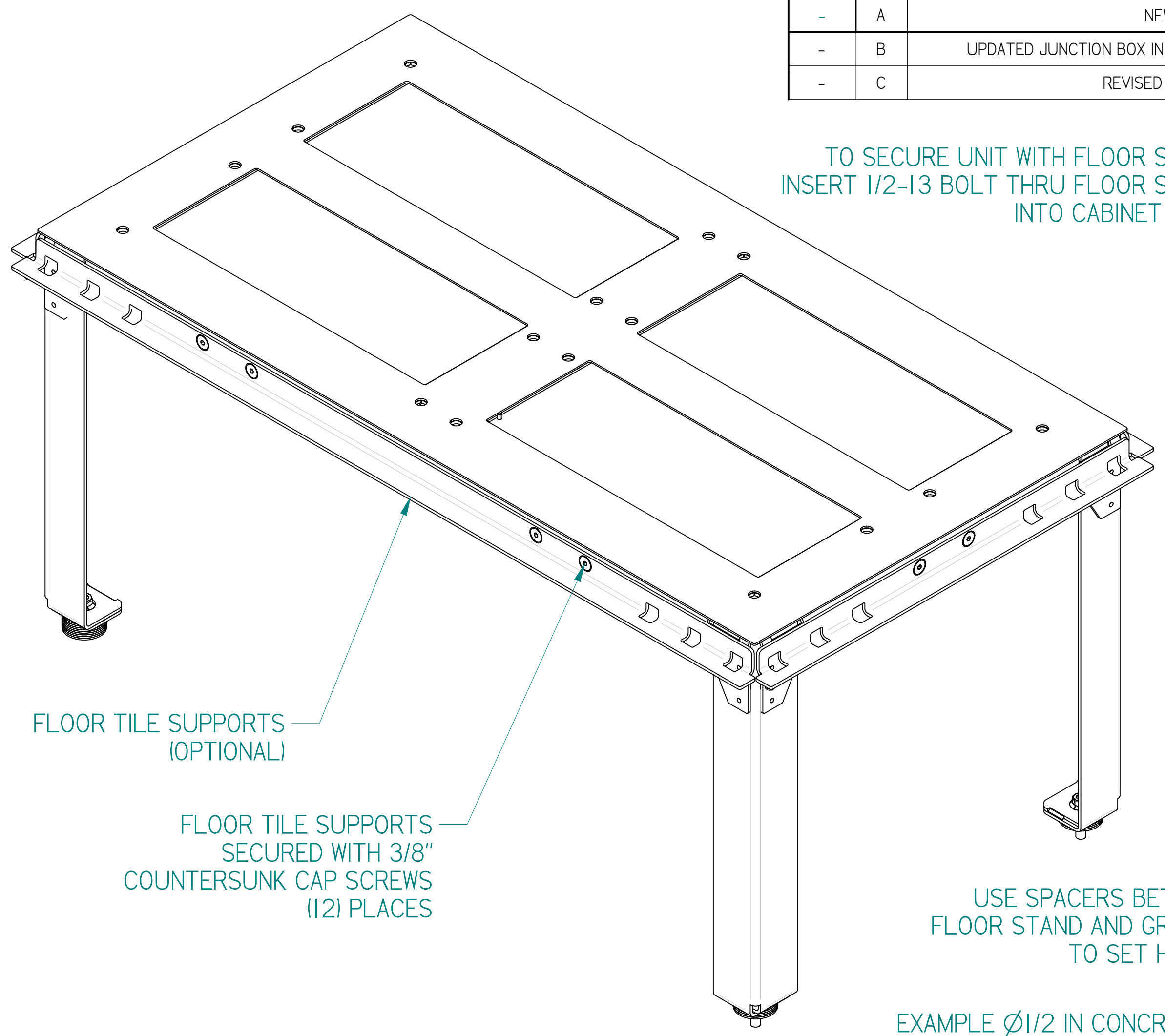
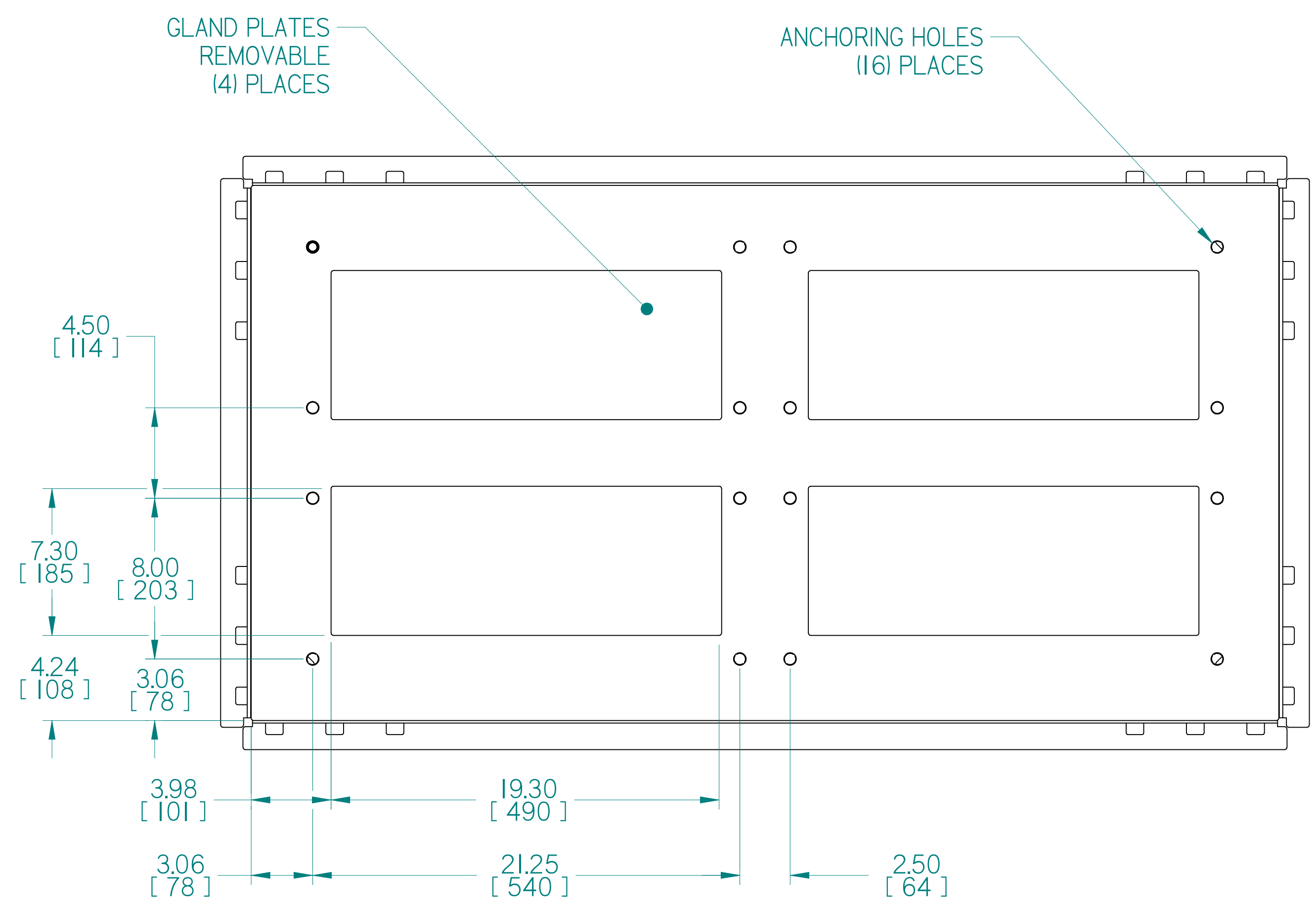
FIRST ANGLE PROJ.

LAYERZERO
POWER SYSTEMS, INC.

OUTLINE, MOUNTING, INSTALLATION DIAGRAM
120/208V : 3-Phase, 4-Wire Input
(2) 42 Circuit Panel Boards
eRPP-SL2

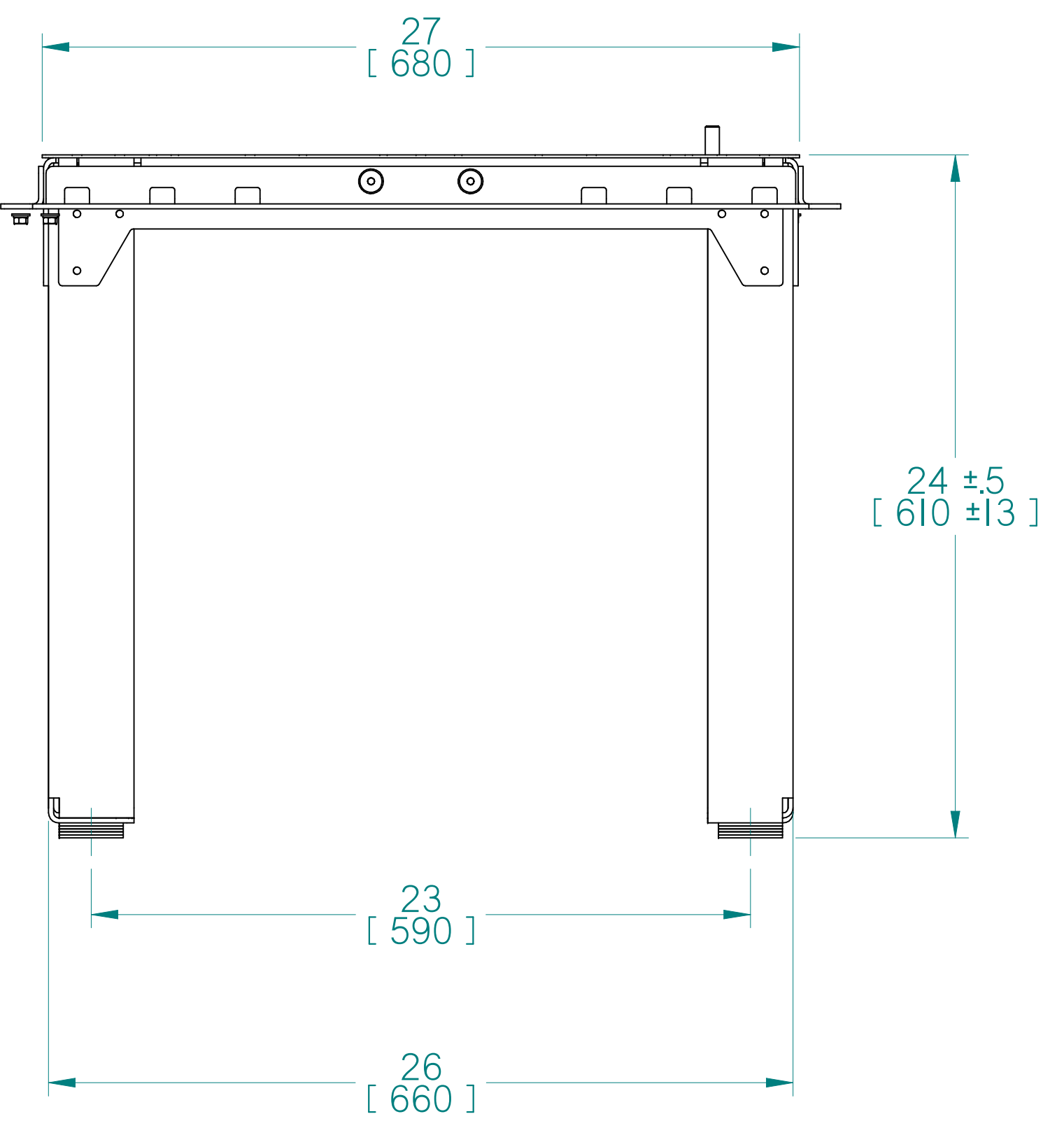
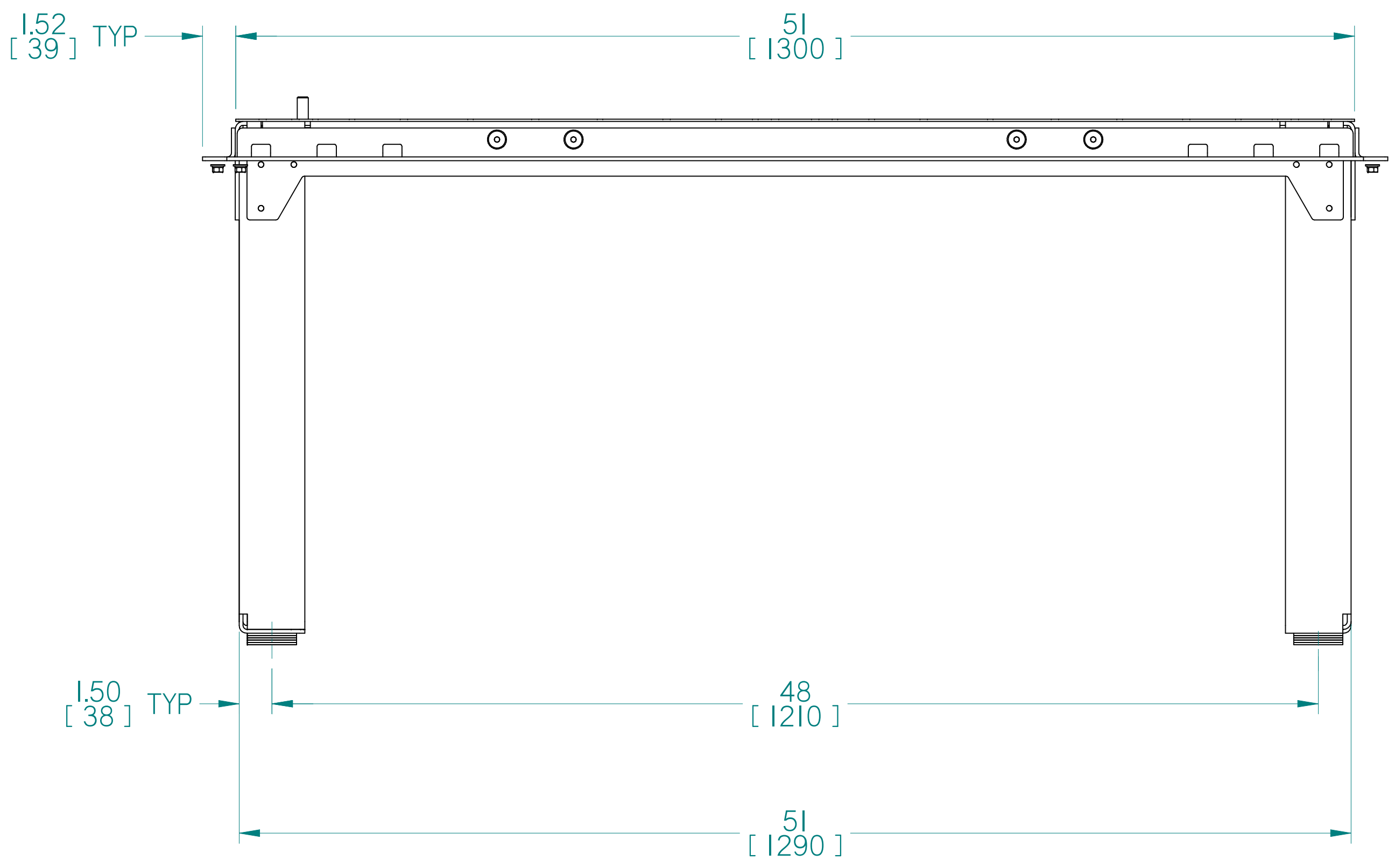
DWN DRT	DATE 10/18/2019	SIZE D	FSCM NO.	DWG NO.	REV C
CHK PTP	DATE 10/18/2019	94-MS-01096201		94-MS-01096201	
APVD DRT	DATE 10/18/2019	SCALE 1:10	94-MS-01096201+CSHT4	SHEET	4 of 7

REVISIONS				
ECN	REV	DESCRIPTION	DATE	APPROVED
-	A	NEW RELEASE	10/18/2019	DRT
-	B	UPDATED JUNCTION BOX INFORMATION & ADDED FLOOR STAND	9/24/2019	DRT
-	C	REVISED CABINET DESIGN	12/02/2019	DRT



NOTES:

1. MOUNT THE FLOOR STAND TO THE GROUND PER SITE REQUIREMENTS. FLOOR STAND MOUNTING HOLES FOR Ø1/2 IN ANCHORS, WHICH ARE PROVIDED BY OTHERS.
2. 1/2-13 UNC HARDWARE (THREADED ROD, LOCKWASHER, WASHER AND NUT) SUPPLIED FOR CONNECTION OF eRPP TO FLOOR STAND. (SEE AUX VIEW 1)
3. RAISED FLOOR TILE SUPPORTS ARE PROVIDED AS AN OPTION TO JOIN PARTIAL TILES TO THE FLOOR STAND ASSEMBLY
4. LEVELED HEIGHT OF THE FLOOR STAND IS SET TO DESIRED HEIGHT USING SPACERS PROVIDED. OTHER SHIMS MAY BE USED TO ACHIEVE DESIRED HEIGHT (SEE AUX VIEW 2)



Copyright © 2019, LayerZero Power Systems, Inc.

UNLESS OTHERWISE SPECIFIED DIMENSIONS ARE IN INCHES DIMENSIONS IN [] ARE IN mm DO NOT SCALE DRAWING

TOLERANCES:
 .XX ± .03
 .XXX ± .010
 ANGULAR ± .1/2

FIRST ANGLE PROJ.

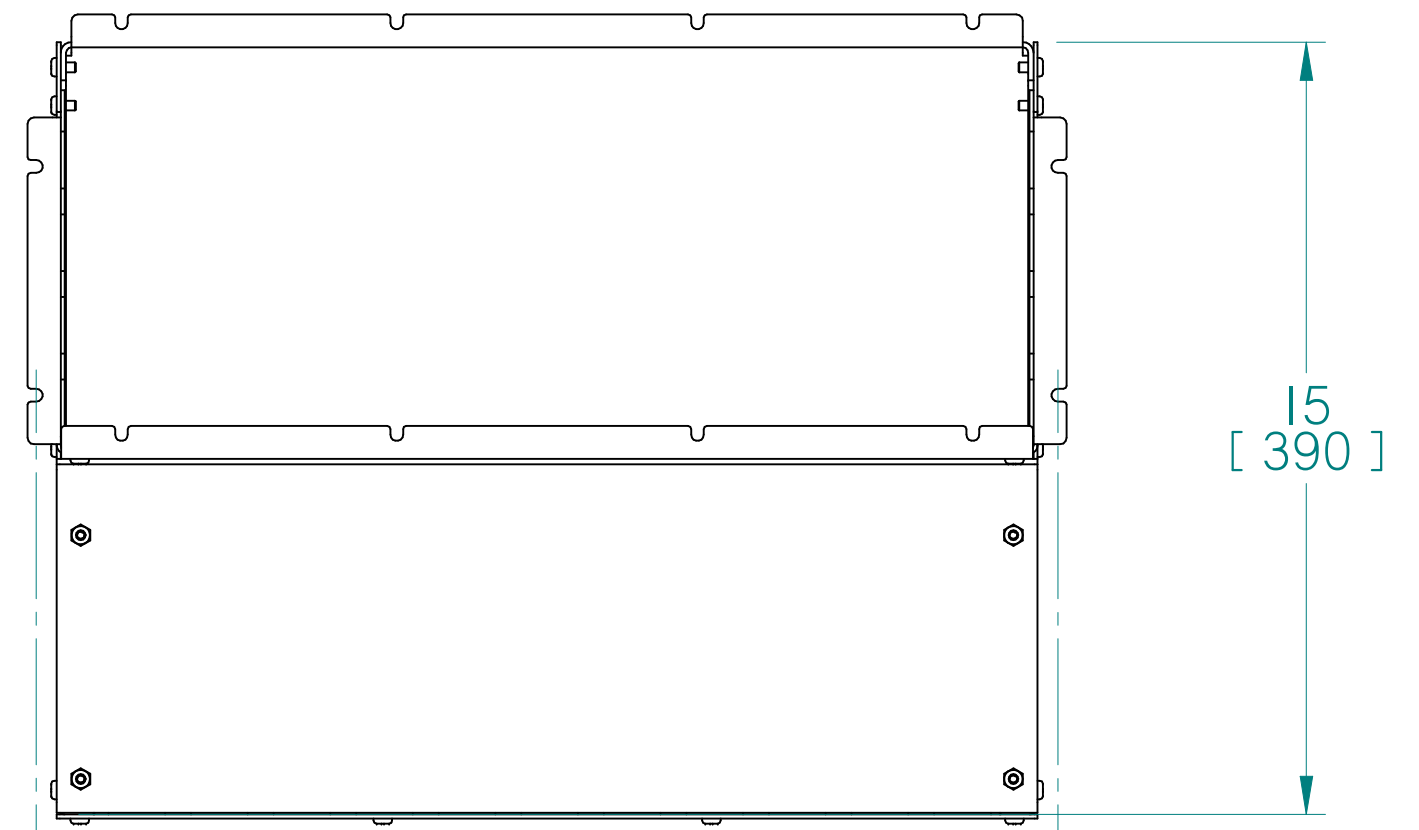
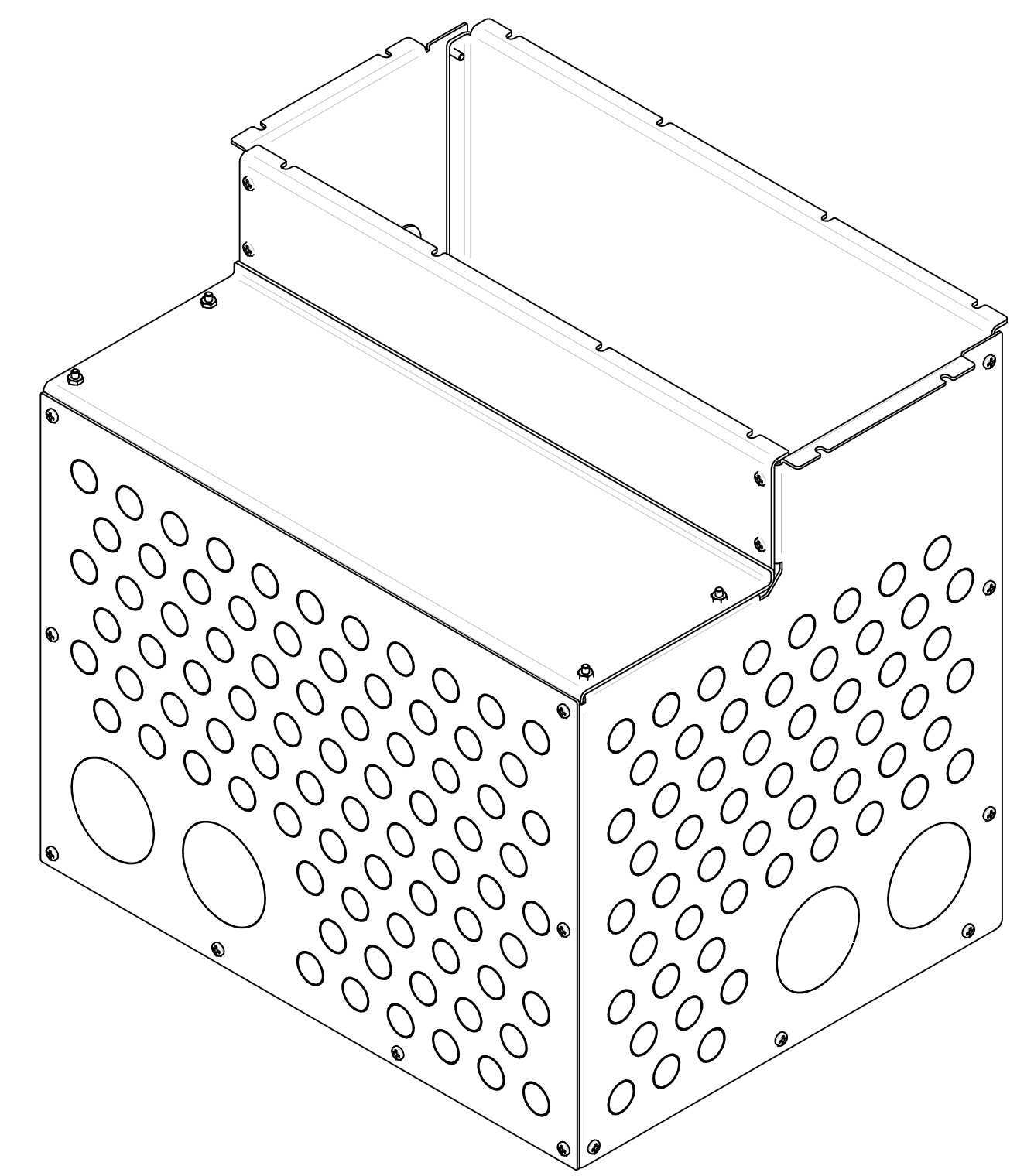
LAYERZERO
POWER SYSTEMS, INC.

OUTLINE, MOUNTING, INSTALLATION DIAGRAM
 120/208V : 3-Phase, 4-Wire Input
 (2) 42 Circuit Panel Boards
 eRPP-SL2

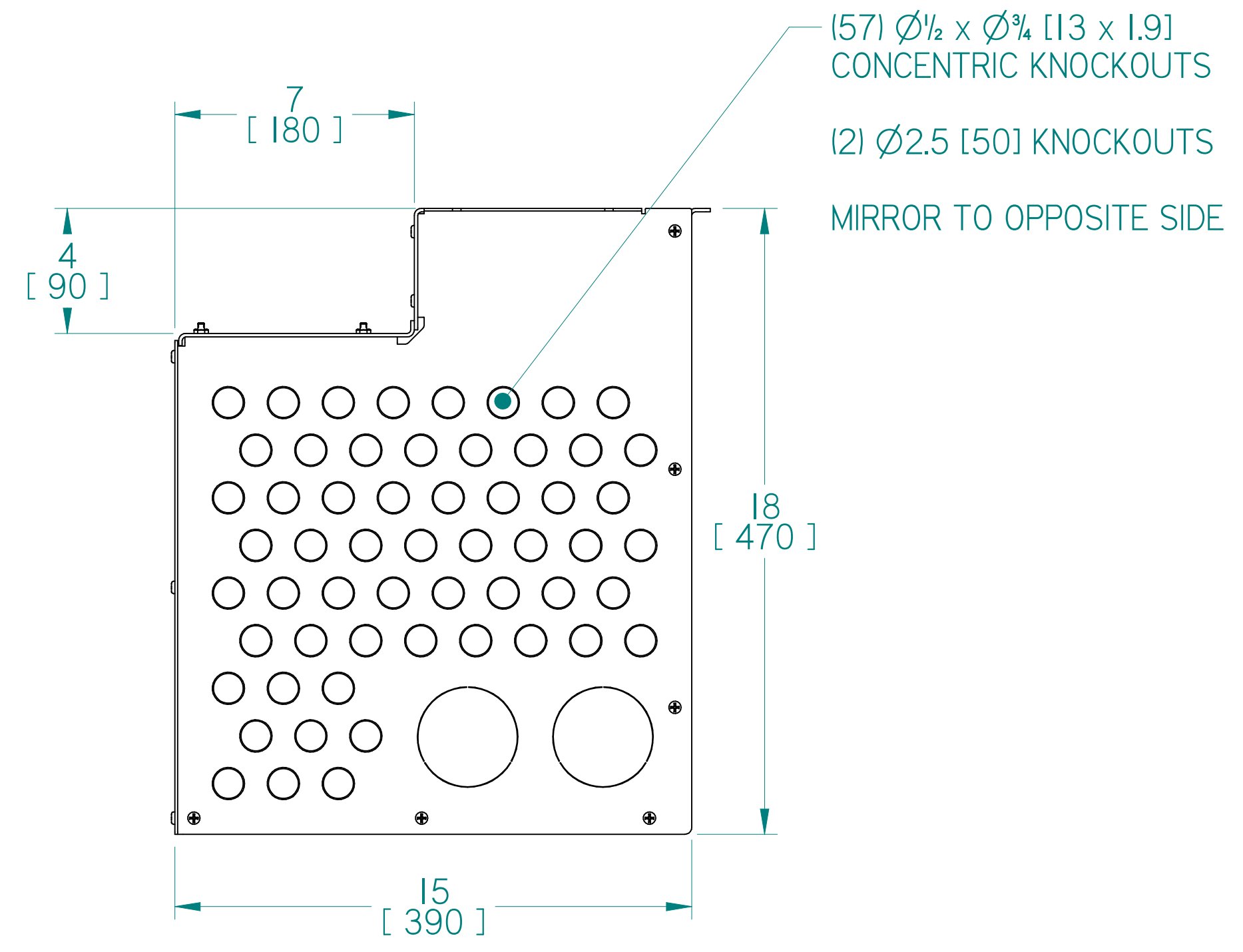
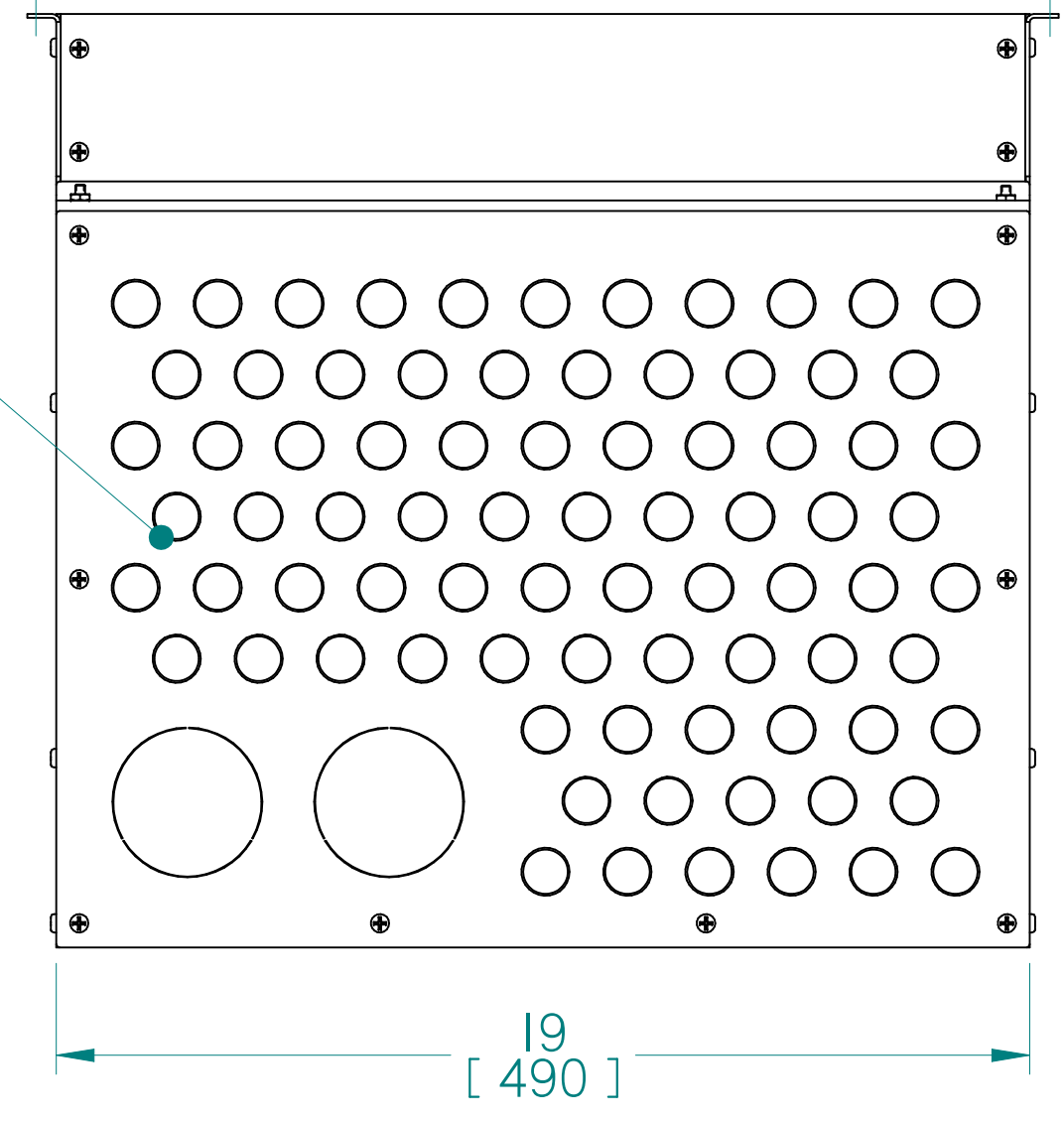
DWN DRT	DATE 10/18/2019	SIZE D	FSCM NO.	DWG NO.	REV C
CHK PTP	DATE 10/18/2019	94-MS-01096201			
APVD DRT	DATE 10/18/2019	SCALE 1:5	94-MS-01096201+CSHT5	SHEET	5 of 7

42-01-40413107 JUNCTION BOX ASSEMBLY

REVISIONS				
ECN	REV	DESCRIPTION	DATE	APPROVED
-	A	NEW RELEASE	10/18/2019	DRT
-	B	UPDATED JUNCTION BOX INFORMATION & ADDED FLOOR STAND	9/24/2019	DRT
-	C	REVISED CABINET DESIGN	12/02/2019	DRT



180) $\varnothing\frac{1}{2} \times \varnothing\frac{3}{4}$ [13 x 1.9] CONCENTRIC KNOCKOUTS
 (2) $\varnothing 2.5$ [50] KNOCKOUTS
 THIS SIDE ONLY



Copyright © 2019, LayerZero Power Systems, Inc.

UNLESS OTHERWISE SPECIFIED
 DIMENSIONS ARE IN INCHES
 DIMENSIONS IN [] ARE IN mm
 DO NOT SCALE DRAWING

TOLERANCES:
 .XX ± .03
 .XXX ± .010
 ANGULAR ± .1/2

FIRST ANGLE PROJ.

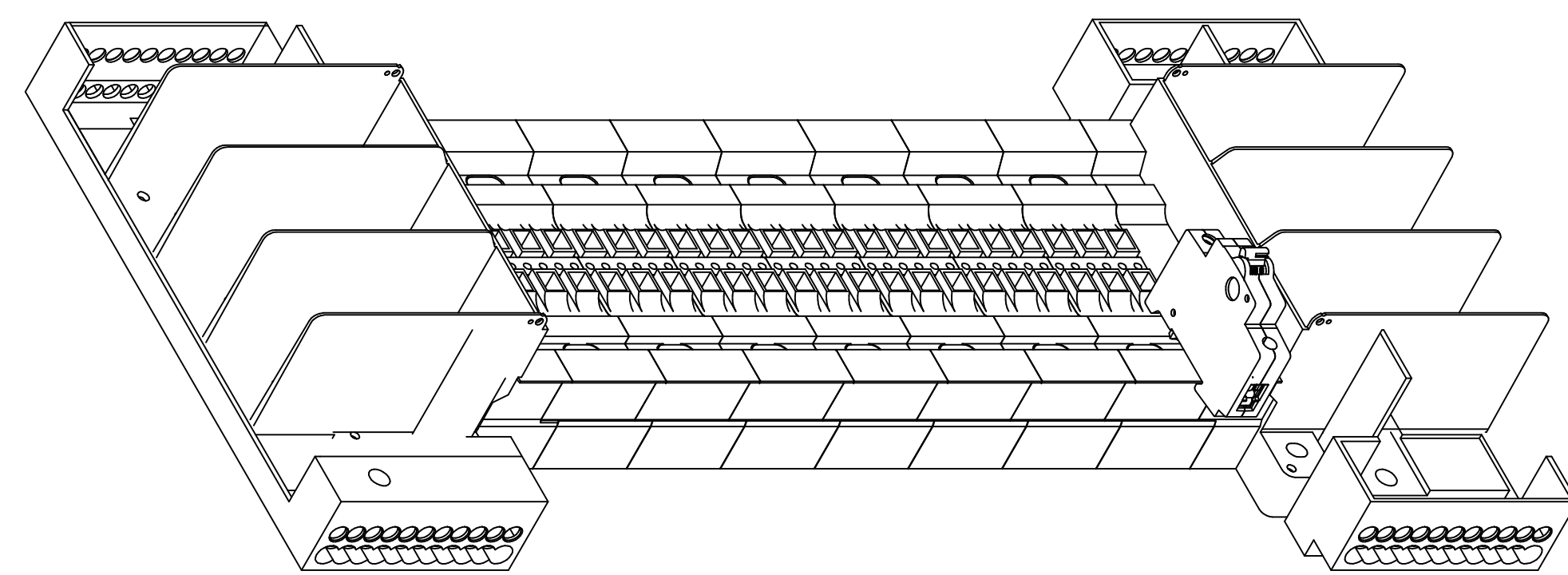
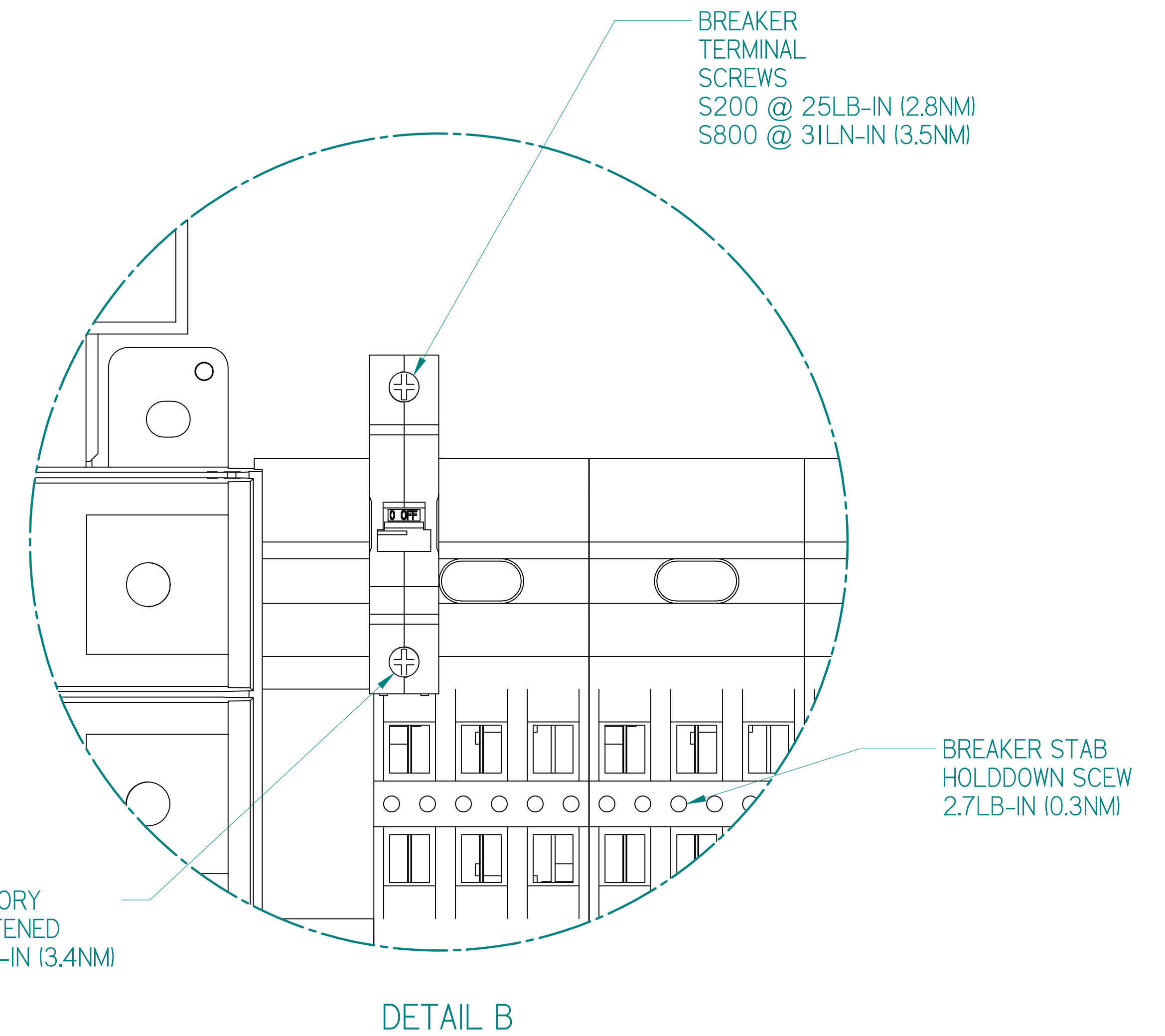
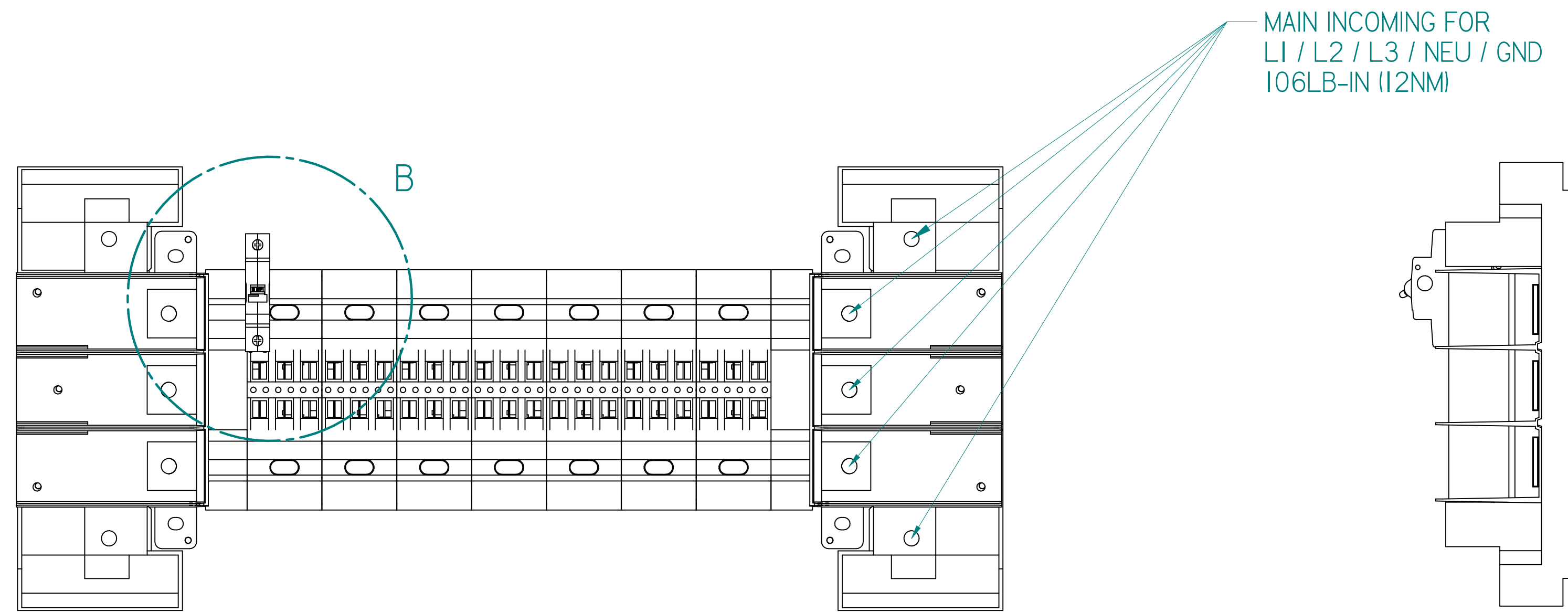
LAYERZERO
 POWER SYSTEMS, INC.

OUTLINE, MOUNTING, INSTALLATION DIAGRAM
 120/208V : 3-Phase, 4-Wire Input
 (2) 42 Circuit Panel Boards
 eRPP-SL2

DWN DRT	DATE 10/18/2019	SIZE D	FSCM NO.	DWG NO. 94-MS-01096201	REV C
CHK PTP	DATE 10/18/2019	SCALE 1:4	94-MS-01096201+CSHT6	SHEET 6 of 7	
APVD DRT	DATE 10/18/2019				

STANDARD PANELBOARD TORQUE DATA

REVISIONS				
ECN	REV	DESCRIPTION	DATE	APPROVED
-	A	NEW RELEASE	10/18/2019	DRT
-	B	UPDATED JUNCTION BOX INFORMATION & ADDED FLOOR STAND	9/24/2019	DRT
-	C	REVISED CABINET DESIGN	12/02/2019	DRT



Copyright © 2019, LayerZero Power Systems, Inc.

UNLESS OTHERWISE SPECIFIED
DIMENSIONS ARE IN INCHES
DIMENSIONS IN [] ARE IN mm
DO NOT SCALE DRAWING

TOLERANCES:
.XX ± .03
.XXX ± .010
ANGULAR ± .1/2

FIRST ANGLE PROJ.

OUTLINE, MOUNTING, INSTALLATION DIAGRAM
120/208V : 3-Phase, 4-Wire Input
(2) 42 Circuit Panel Boards
eRPP-SL2

DWN DRT	DATE 10/18/2019	SIZE	FSCM NO.	DWG NO.	REV
CHK PTP	DATE 10/18/2019	D		94-MS-01096201	C
APVD DRT	DATE 10/18/2019	SCALE 1:1	94-MS-01096201+CSHT7	SHEET	7 of 7