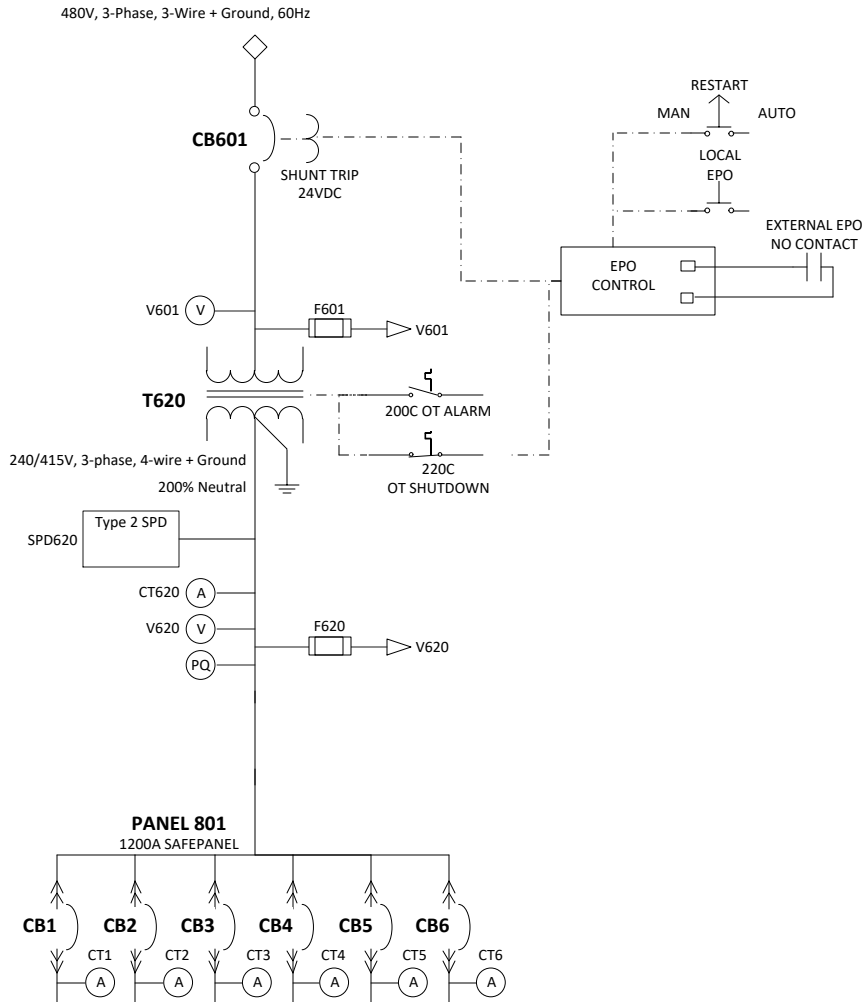


Series 70 ePODs: Type-X

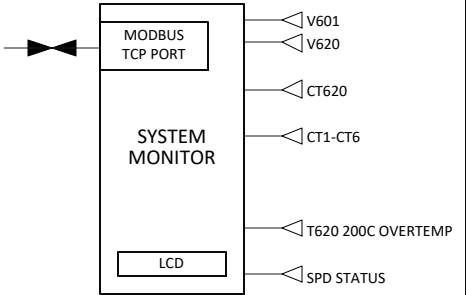


TRANSFORMER DATA

REF NO	INPUT	OUTPUT	SIZE	K-FACTOR	TEMP RISE	EFFICIENCY CLASS	INRUSH
T620	480V, 3-Phase, 3-Wire + Ground	240/415V, 3-phase, 4-wire + Ground	750kVA	k-9	150C	Per DOE 2016	5X Max

CIRCUIT BREAKER DATA

REF NO	RATING	FAULT RATING	TYPE	MOUNTING	AUXILIARY CONTACTS	SHUNT TRIPS	MFG	BREAKER SERIES
CB601	1200AF / 1200AT, 100%	65kAIC @ 480VAC (per UL ratings)	Electronic Trip (LS/I)	Fixed	No	24VDC	ABB	Tmax T7
CB1-6	800AF / 600AT, 80%	35kAIC @ 480VAC (per UL ratings)	Electronic Trip (LS/I)	Plug-in, (2) 250-500 MCM load lugs	No	No	ABB	Tmax T6




ADDITIONAL INFORMATION:

- Input Connections: Two-hole Compression Lug Terminals
- Display Type: Intermediate: 800x600 pixels, 16-bit color

SAFEPANEL NOTES

1. SAFEPANEL IS CENTER-TAPPED.
2. MAXIMUM TOTAL CURRENT: 1200A
3. MAXIMUM CURRENT ON EITHER SIDE OF TAP: 800A
4. FOR 400AF SUBFEED CIRCUIT BREAKERS:
 - a. MAXIMUM RATING OF ADJACENT CIRCUIT BREAKERS: 80%
 - b. FOR 100% RATING, ONE EMPTY SPACE IS REQUIRED ABOVE CIRCUIT BREAKER.

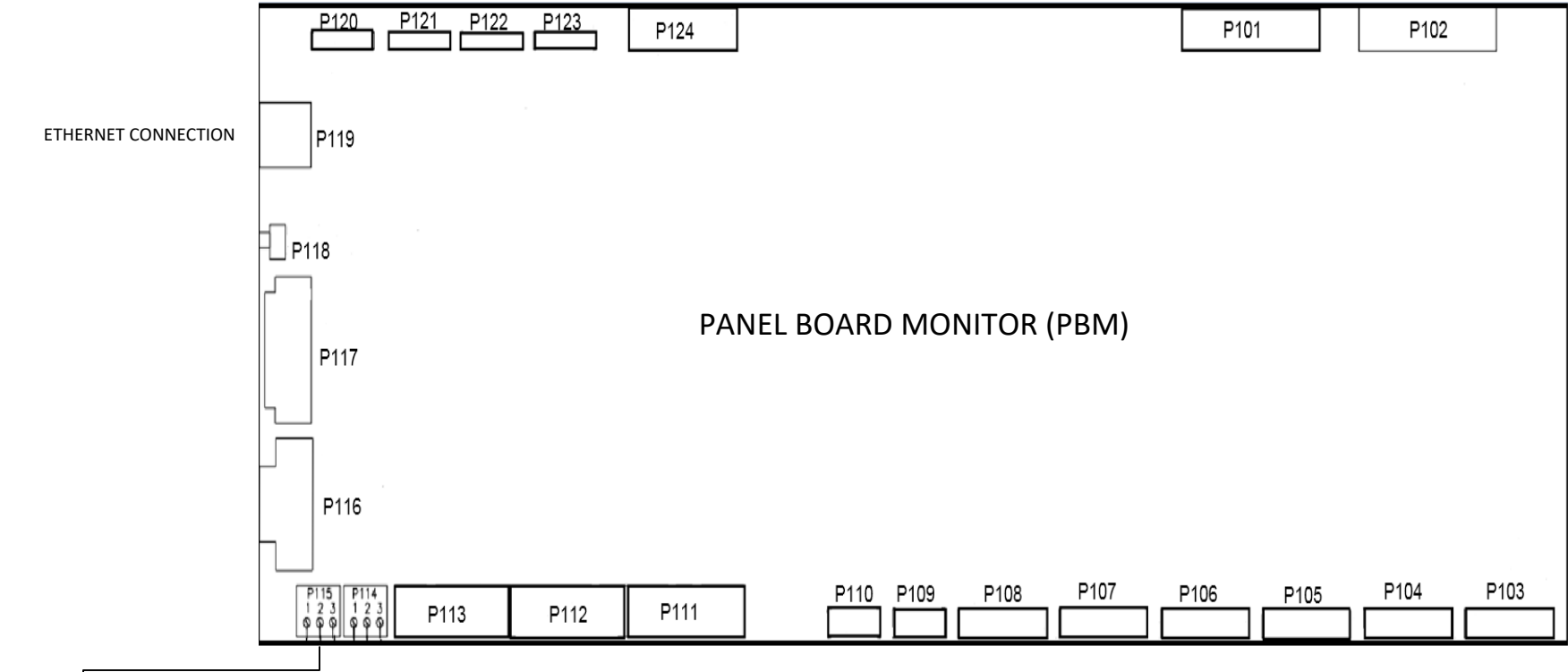
LEGEND				
(A)	CURRENT METERING POINT	(PQ)	POWER QUALITY METERING POINT	
(V)	VOLTAGE METERING POINT			
 LAYERZERO POWER SYSTEMS, INC.			PAGE DESCRIPTION	
			ONE LINE DIAGRAM, Type-X ePODs	
JOB	DRAWN	DATE 6/20/2023	DWG NO XePODs001286	REV A
	CHK	DATE		
	APPR	DATE	SHEET 1 OF 4	

THIS PAGE INTENTIONALLY LEFT BLANK

PANEL BOARD MONITOR (PBM)



SYMBOL FOR CLOSED CONTACTS



P115
SUMMARY ALARM

SUMMARY ALARM



NO SUMMARY ALARM



NOTES:

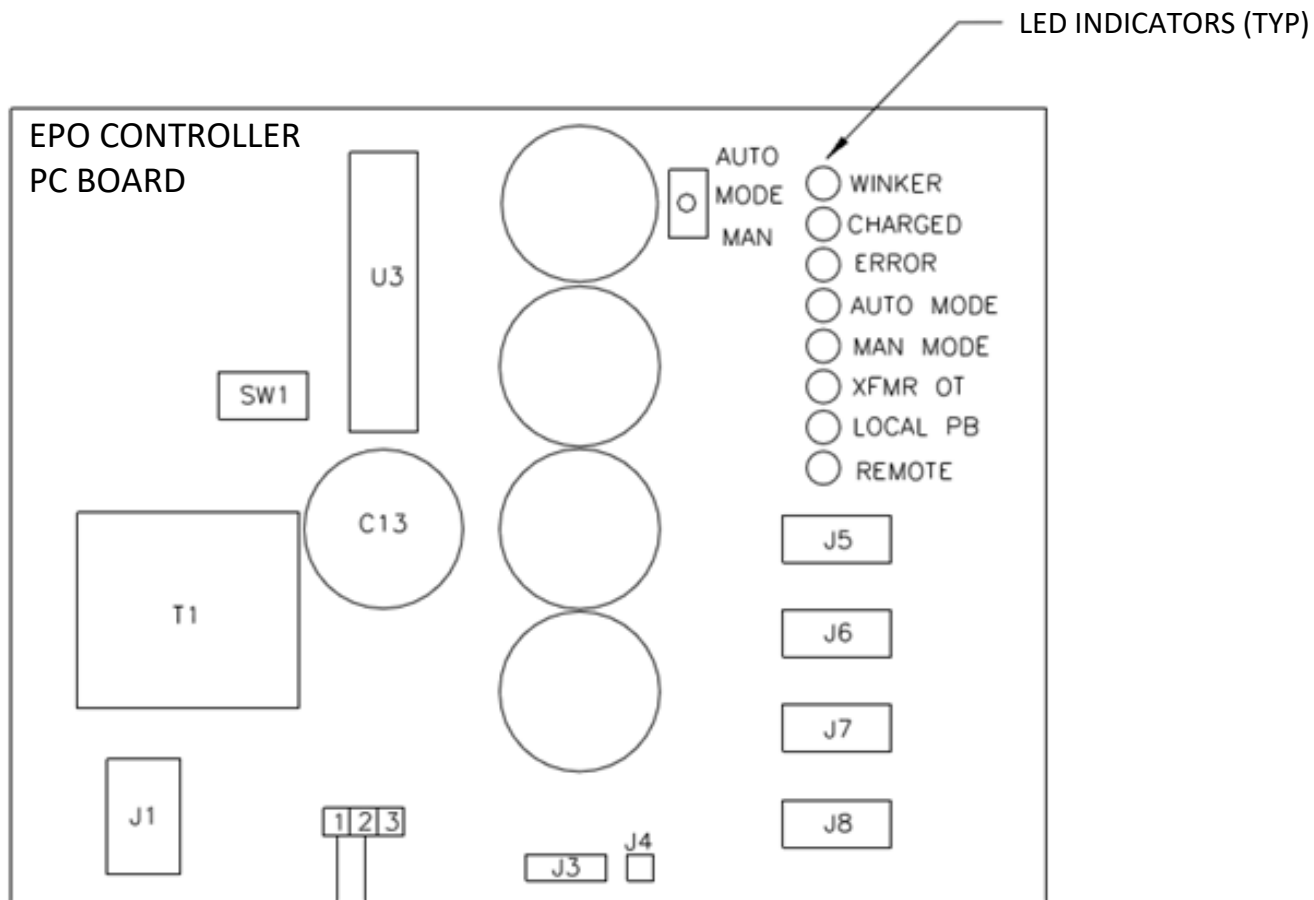
1. TERMINAL NUMBERS REFER TO TERMINALS ON PANEL BOARD MONITOR (PBM). THE PBM IS LOCATED IN THE CONTROLS/MONITORING SECTION. REFER TO THE MECHANICAL OUTLINE DRAWING FOR EXACT LOCATION.
 2. TERMINALS SUITABLE FOR AWG 20-16 STRANDED COPPER WIRE. MAXIMUM ONE WAY LENGTH FOR #16: 500 ft (152 m).
 3. ALL WIRING TO BE IN ACCORDANCE WITH THE NATIONAL ELECTRIC CODE AND ALL LOCAL CODES. CONTROL AND STATUS WIRING MUST BE RUN AND IN SEPARATE CONDUIT FROM POWER WIRING.
 4. SUMMARY ALARM CONTACTS ARE DRY, POTENTIAL-FREE CONTACTS.
- CUSTOMER REQUIREMENTS ARE AS FOLLOWS:
- a. Open circuit voltage ≤ 120 V RMS AC.
 - b. Closed circuit current ≤ 1 A RMS.



LAYERZERO
POWER SYSTEMS, INC.


PAGE DESCRIPTION
ONE LINE DIAGRAM, Type-X ePODs

JOB	DRAWN	DATE 6/20/2023	DWG NO	REV
	CHK	DATE	XePODs001286	A
	APPR	DATE		
SHEET 3 OF 4				



EXTERNAL EPO CONTACT

MUST BE POTENTIAL FREE, DRY CONTACT
NORMALLY OPEN
CLOSE TO ACTIVATE EPO FUNCTION
CONTACT SENSING CIRCUIT IS 5 V DC, 5 mA

 LAYERZERO POWER SYSTEMS, INC.				PAGE DESCRIPTION	
				ONE LINE DIAGRAM, Type-X ePODs	
JOB	DRAWN	DATE	6/20/2023	DWG NO XePODs001286	REV A
	CHK	DATE			
	APPR	DATE			
				SHEET 4 OF 4	