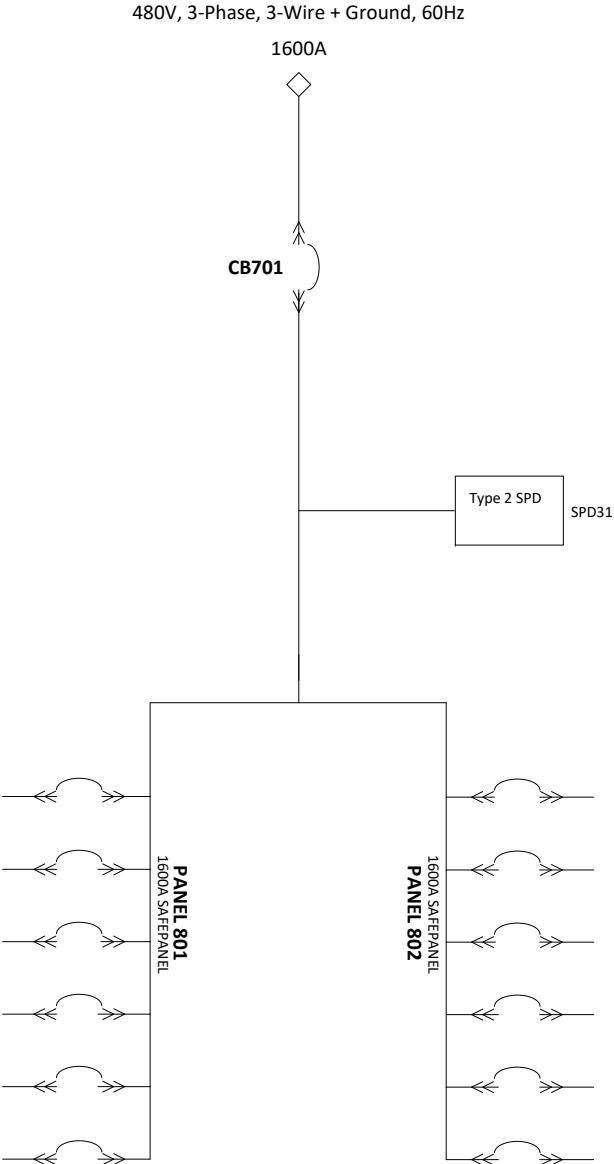


Series 70 eRDP


CIRCUIT BREAKER DATA

REF NO	RATING	FAULT RATING	TYPE	MOUNTING	AUXILIARY CONTACTS	SHUNT TRIPS	MFG	BREAKER SERIES
CB701	1600AF / 1600AT, 100%	65kAIC @ 480VAC (per UL ratings)	Electronic Trip (LSIG) w/ Arc Red Mode	Fixed	No	No	ABB	Emax 2



ADDITIONAL INFORMATION:
1. Input Terminals: Two-hole Compression Lug Terminals

SAFE PANEL NOTES
1. FOR 400AF SUBFEED CIRCUIT BREAKERS:
a. MAXIMUM RATING OF ADJACENT CIRCUIT BREAKERS: 80%
b. FOR 100% RATING, ONE EMPTY SPACE IS REQUIRED ABOVE CIRCUIT BREAKER.

 LAYERZERO POWER SYSTEMS, INC.			PAGE DESCRIPTION ONE LINE DIAGRAM, RDP	
JOB LZ-11280	DRAWN	DATE 1/5/2024	DWG NO 94-ES-11280-1	REV A
	CHK	DATE		
	APPR	DATE	SHEET 1 OF 1	