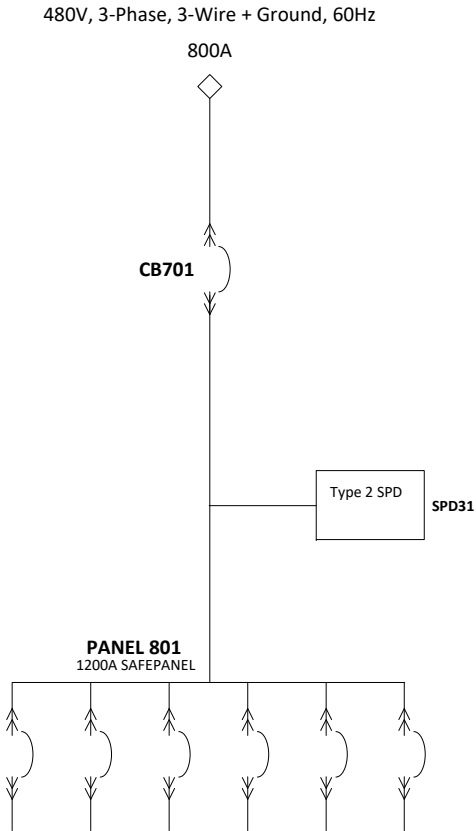


Series 70 eRDP

CIRCUIT BREAKER DATA

REF NO	RATING	FAULT RATING	TYPE	MOUNTING	AUXILIARY CONTACTS	SHUNT TRIPS	MFG	BREAKER SERIES
CB701	1200AF / 800AT, 100%	65kAIC @ 480VAC (per UL ratings)	Electronic Trip (LSIG) w/ Arc Red Mode	Fixed	No	No	ABB	Emax 2




ADDITIONAL INFORMATION:

- 1. Input Terminals: Two-hole Compression Lug Terminals
- 2. Subfeed circuit breakers to be installed per panel schedule that will be provided in the future.

SAFEPANEL NOTES

- 1. SAFEPANEL IS CENTER-TAPPED.
- 2. MAXIMUM TOTAL CURRENT: 1200A
- 3. MAXIMUM CURRENT ON EITHER SIDE OF TAP: 800A
- 4. FOR 400AF SUBFEED CIRCUIT BREAKERS:
  - a. MAXIMUM RATING OF ADJACENT CIRCUIT BREAKERS: 80%
  - b. FOR 100% RATING, ONE EMPTY SPACE IS REQUIRED ABOVE CIRCUIT BREAKER.

 <b>LAYERZERO</b> POWER SYSTEMS, INC.			PAGE DESCRIPTION	
			ONE LINE DIAGRAM, RDP	
JOB LZ-11160	DRAWN	DATE 8/30/2022	DWG NO 94-ES-11160-1	REV B
	CHK	DATE		
	APPR	DATE		
			SHEET 1 OF 1	