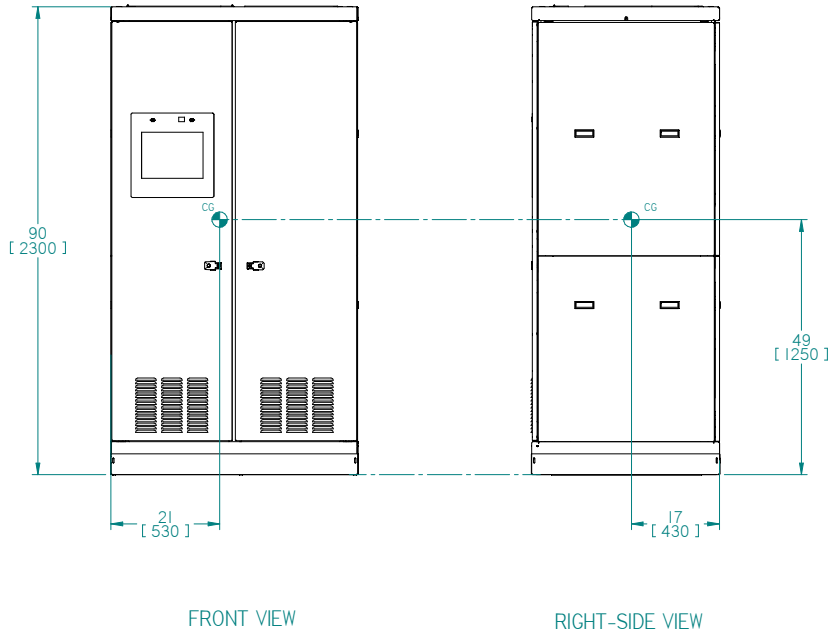
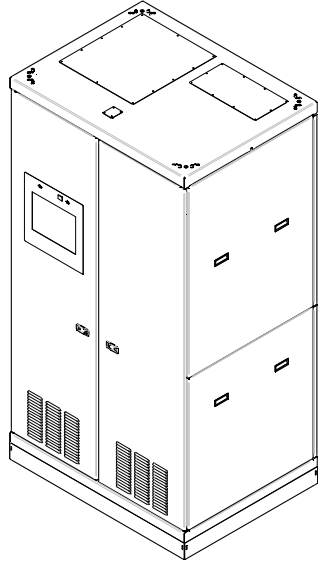
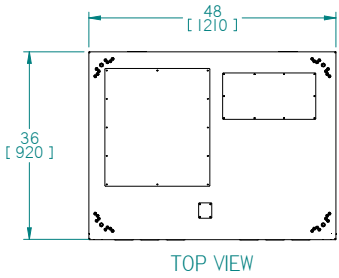


8 7 6 5 4 3 2 1

REVISIONS				
ECN	REV	DESCRIPTION	DATE	APPROVED
-	A	NEW RELEASE	10/16/2020	SPJ



NOTES:

1. Front access only required for operation and servicing. Use nominal clearances for back and sides of cabinet.
2. See Sheet 2 contains a descriptive index of parts
3. See Sheet 3 for details of external features and cable access areas.
- The Optional 42-00-40764710-A Weight Distributing Base is installed at the factory. Forklift Access provided from the sides of the assembly as shown.
4. See Sheet 4 for details of internal features and cable I/O landing locations
5. See Sheet 5 for details of cable bend radii and recommended wire sizes (Table II)
6. Floor skirts (as shown on sheet II) to installed at the factory
7. See the One Line Electrical Diagram for further details.

Copyright © 2020, LayerZero Power Systems, Inc.

UNLESS OTHERWISE SPECIFIED
DIMENSIONS ARE IN INCHES
DIMENSIONS IN [] ARE IN mm
DO NOT SCALE DRAWING

TOLERANCES:
XX ± .03
XXX ± .010
ANGULAR ± 1/2

FIRST ANGLE PROJ.

LAYERZERO
POWER SYSTEMS, INC.

OUTLINE, MOUNTING, INSTALLATION
DIAGRAM SERIES 70 ESTS (2) SOURCE,
4-POLE, 120/208VAC, 250A, SMR/TMR

DWN SPJ	DATE 10/16/2020	SIZE D	FSCM NO.	DWG NO. 94-MS-01103801	REV A
CHK DRT	DATE 10/16/2020	SCALE 1:2		94-MS-01103801-ASHTI	SHEET 1 of 5
APVD SPJ	DATE 10/16/2020				

8 7 6 5 4 3 2 1

8

7

6

5

4

3

2

1

REVISIONS				
ECN	REV	DESCRIPTION	DATE	APPROVED
-	A	NEW RELEASE	10/16/2020	SPJ

D

C

B

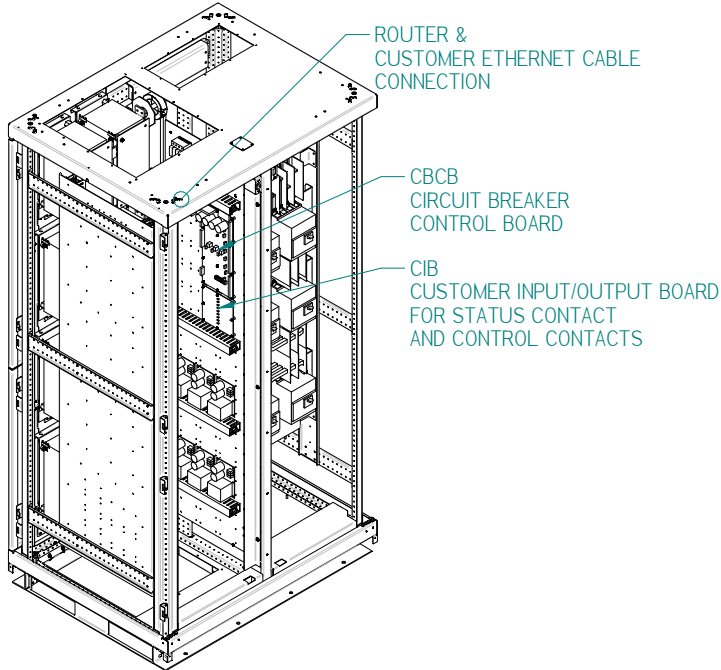
A

D

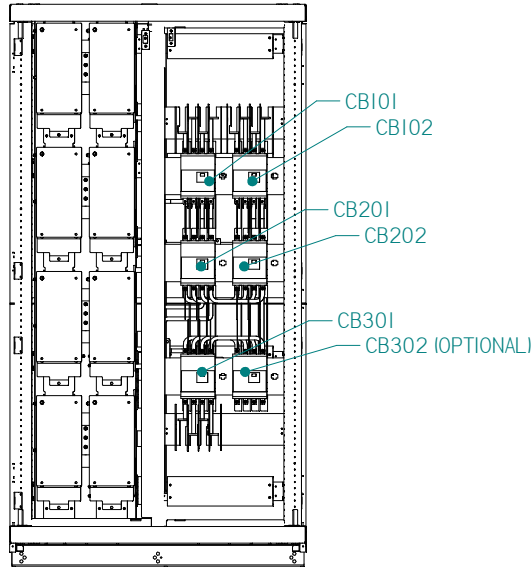
C

B

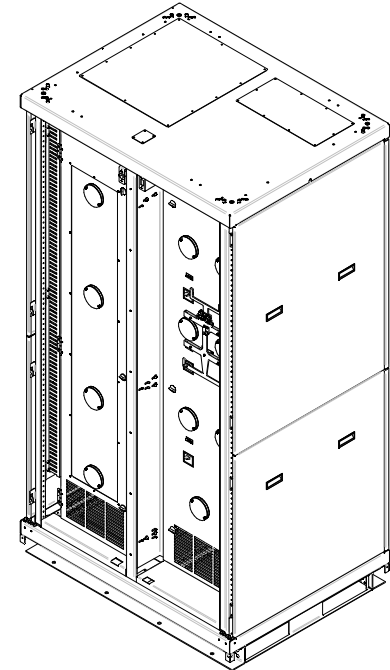
A



LEFT ISOMETRIC VIEW



FRONT VIEW



RIGHT ISOMETRIC VIEW

Copyright © 2020, LayerZero Power Systems, Inc.

UNLESS OTHERWISE SPECIFIED
DIMENSIONS ARE IN INCHES
DIMENSIONS IN [] ARE IN mm
DO NOT SCALE DRAWING

TOLERANCES:
XX ± .03
XXX ± .010
ANGULAR ± 1/2

FIRST ANGLE PROJ.

DWN SPJ DATE 10/16/2020
CHK DRT DATE 10/16/2020
APVD SPJ DATE 10/16/2020

SIZE: D FSCM NO. DWG NO. 94-MS-01103801 REV A

SCALE: 1:8 94-MS-01103801-ASHT2 SHEET 2 of 5

LAYERZERO
POWER SYSTEMS, INC.

OUTLINE, MOUNTING, INSTALLATION
DIAGRAM SERIES 70 ESTS (2) SOURCE,
4-POLE, 120/208VAC, 250A, SMR/TMR

8

7

6

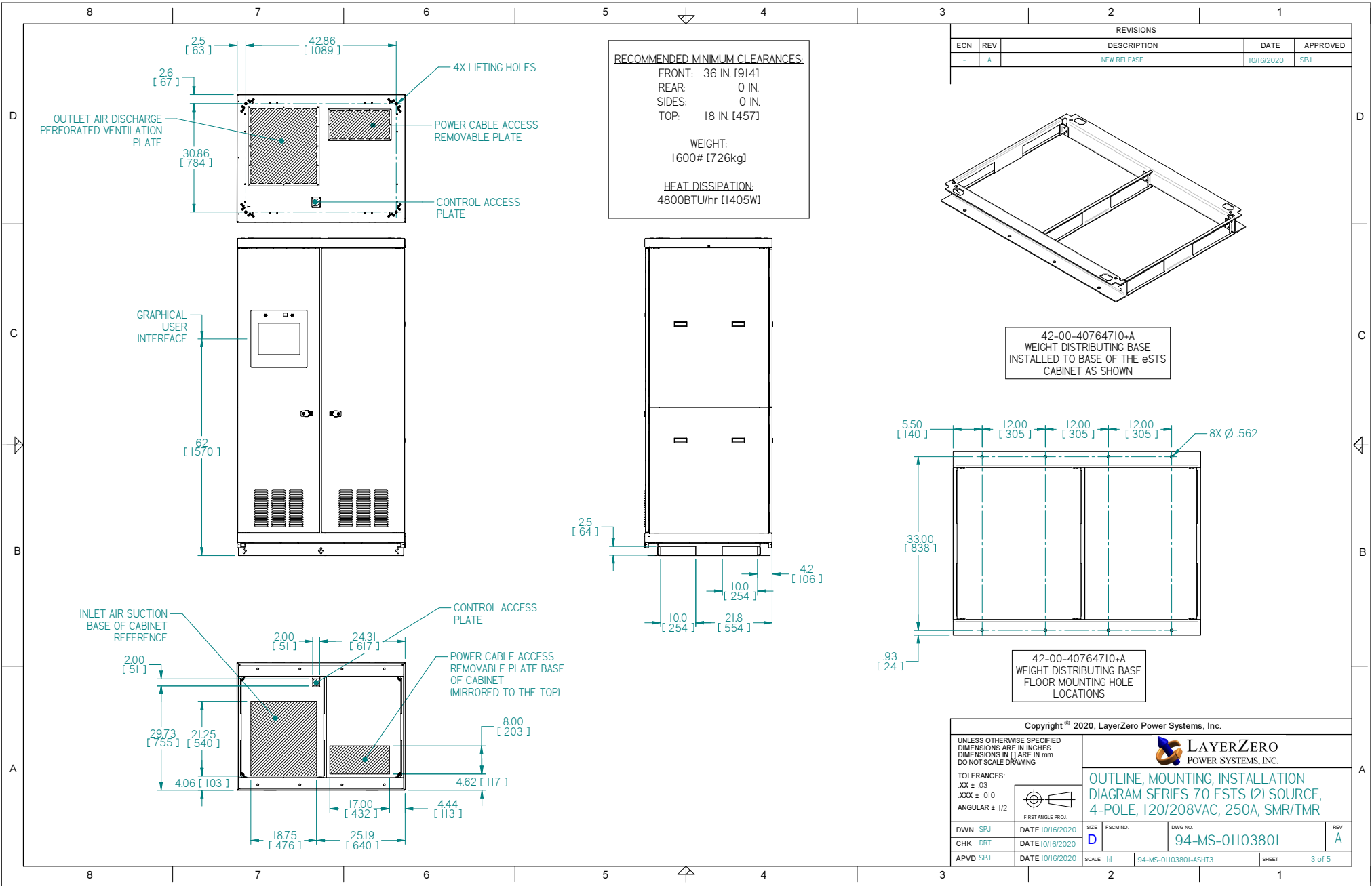
5

4

3

2

1

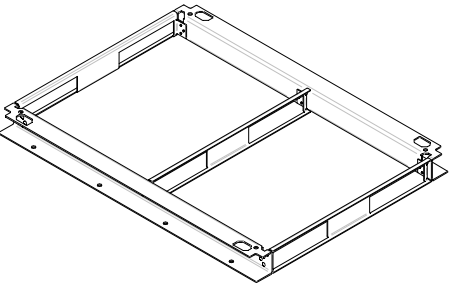


RECOMMENDED MINIMUM CLEARANCES:
 FRONT: 36 IN. [914]
 REAR: 0 IN.
 SIDES: 0 IN.
 TOP: 18 IN. [457]

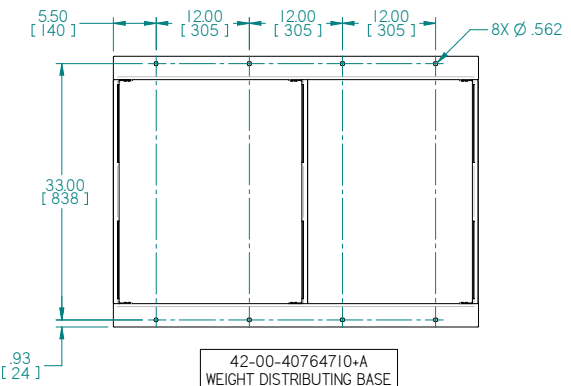
WEIGHT:
 1600# [726kg]

HEAT DISSIPATION:
 4800BTU/hr [1405W]

REVISIONS				
ECN	REV	DESCRIPTION	DATE	APPROVED
-	A	NEW RELEASE	10/16/2020	SPJ



42-00-40764710+A
 WEIGHT DISTRIBUTING BASE
 INSTALLED TO BASE OF THE eSTS
 CABINET AS SHOWN



42-00-40764710+A
 WEIGHT DISTRIBUTING BASE
 FLOOR MOUNTING HOLE
 LOCATIONS

Copyright © 2020, LayerZero Power Systems, Inc.

UNLESS OTHERWISE SPECIFIED
 DIMENSIONS ARE IN INCHES
 DIMENSIONS IN [] ARE IN mm
 DO NOT SCALE DRAWING

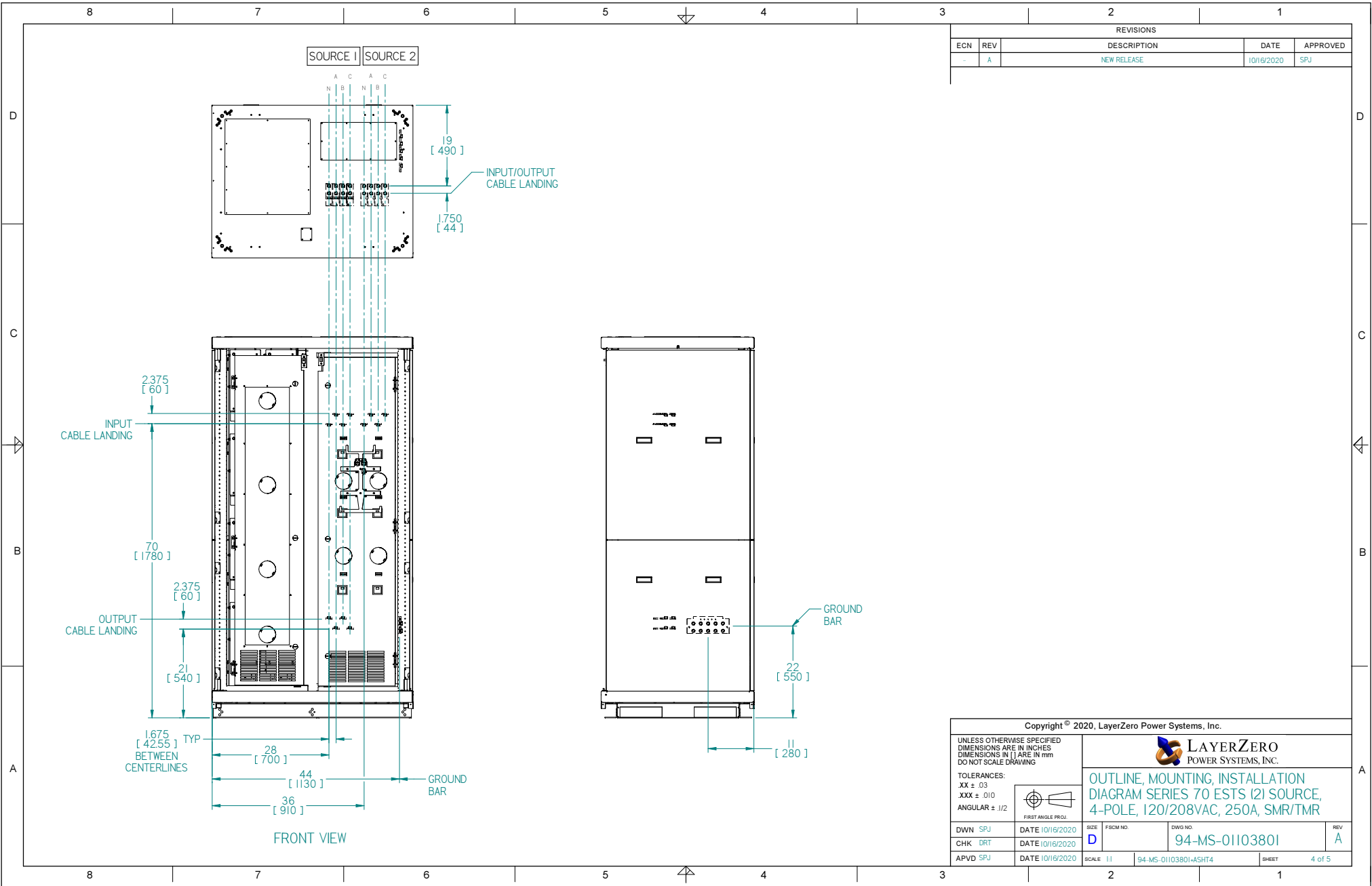
TOLERANCES:
 XX ± .03
 XXX ± .010
 ANGULAR ± 1/2

FIRST ANGLE PROJ.

DWN SPJ	DATE 10/16/2020	SIZE D	FSCM NO.	DWG NO.	REV A
CHK DRT	DATE 10/16/2020	94-MS-01103801			
APVD SPJ	DATE 10/16/2020	SCALE 1:1	94-MS-01103801-ASH3	SHEET	3 of 5

LAYERZERO
 POWER SYSTEMS, INC.

**OUTLINE, MOUNTING, INSTALLATION
 DIAGRAM SERIES 70 eSTS (2) SOURCE,
 4-POLE, 120/208VAC, 250A, SMR/TMR**



REVISIONS				
ECN	REV	DESCRIPTION	DATE	APPROVED
-	A	NEW RELEASE	10/16/2020	SPJ

Copyright © 2020, LayerZero Power Systems, Inc.

UNLESS OTHERWISE SPECIFIED
DIMENSIONS ARE IN INCHES
DIMENSIONS IN [] ARE IN mm
DO NOT SCALE DRAWING

TOLERANCES:
XX ± .03
XXX ± .010
ANGULAR ± 1/2

FIRST ANGLE PROJ.

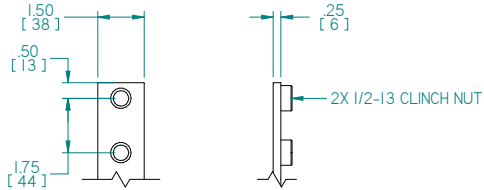
LAYERZERO
POWER SYSTEMS, INC.

OUTLINE, MOUNTING, INSTALLATION
DIAGRAM SERIES 70 ESTS (2) SOURCE,
4-POLE, 120/208VAC, 250A, SMR/TMR

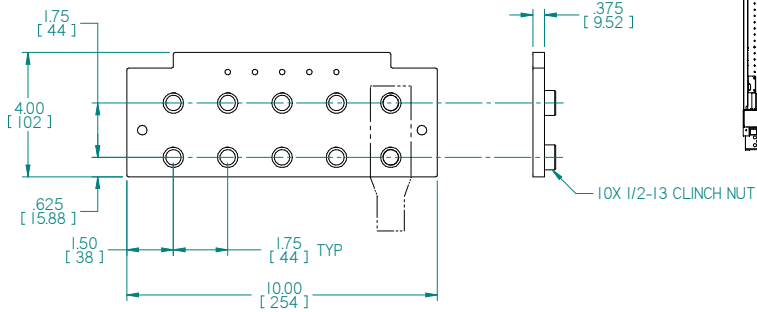
DWN	SPJ	DATE	10/16/2020	SIZE	D	FSCM NO.	DWG NO.	94-MS-01103801	REV	A
CHK	DRT	DATE	10/16/2020	SCALE	1:1	94-MS-01103801-ASHT4	SHEET	4 of 5		
APVD	SPJ	DATE	10/16/2020							

TABLE I Compression lugs for Source 1 & 2 Input Phases and Ground lugs provided by others			
DESCRIPTION	CABLE SIZE AND LUGS		
	RECOMMENDED COPPER WIRE SIZE (75 °C WIRE MIN)	RECOMMENDED ALUMINUM WIRE SIZE (75 °C WIRE MIN)	LUG TYPE & SIZE (75 °C WIRE MIN)
SOURCE INPUT / OUTPUT PHASES	(1) 250 - 350 MCM (2) 1/0 AWG - 350 MCM	(1) 350 MCM (2) 3/0 AWG - 350 MCM	NEMA 2-HOLE (1/2" DIA) ON 1-3/4" CENTER BUS LANDING
GROUND BUS (COMBINED SOURCE INPUT & OUTPUT)	#6 AWG - 250 MCM UP TO (10)	#6 AWG - 250 MCM UP TO (10)	NEMA 2-HOLE (1/2" DIA) ON 1-3/4" CENTER BUS LANDING
CONTROL WIRE	16-20 AWG STRANDED	N/A	NOT REQUIRED

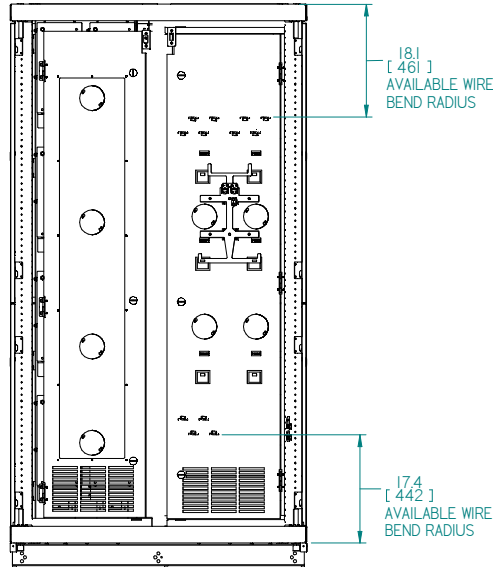
REVISIONS				
ECN	REV	DESCRIPTION	DATE	APPROVED
-	A	NEW RELEASE	10/16/2020	SPJ



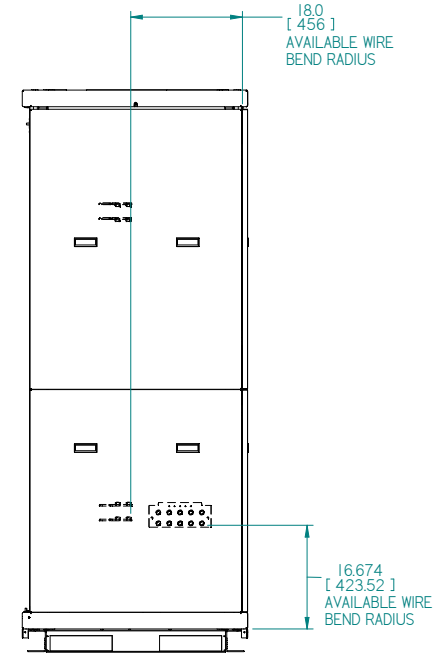
SOURCE 1 & 2
PHASE INPUT/OUTPUT TERMINALS
SCALE 1:2



GROUND TERMINAL
SCALE 1:2



FRONT VIEW



Copyright © 2020, LayerZero Power Systems, Inc.

UNLESS OTHERWISE SPECIFIED
DIMENSIONS ARE IN INCHES
DIMENSIONS IN [] ARE IN mm
DO NOT SCALE DRAWING

TOLERANCES:
XX ± .03
XXX ± .010
ANGULAR ± 1/2

FIRST ANGLE PROJ.

DWN SPJ DATE 10/16/2020
CHK DRT DATE 10/16/2020
APVD SPJ DATE 10/16/2020

SIZE D FSCM NO. DWG NO. 94-MS-01103801 REV A

SCALE 1:2 SHEET 5 of 5

OUTLINE, MOUNTING, INSTALLATION
DIAGRAM SERIES 70 ESTS (2) SOURCE,
4-POLE, 120/208VAC, 250A, SMR/TMR