
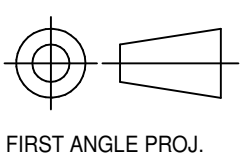
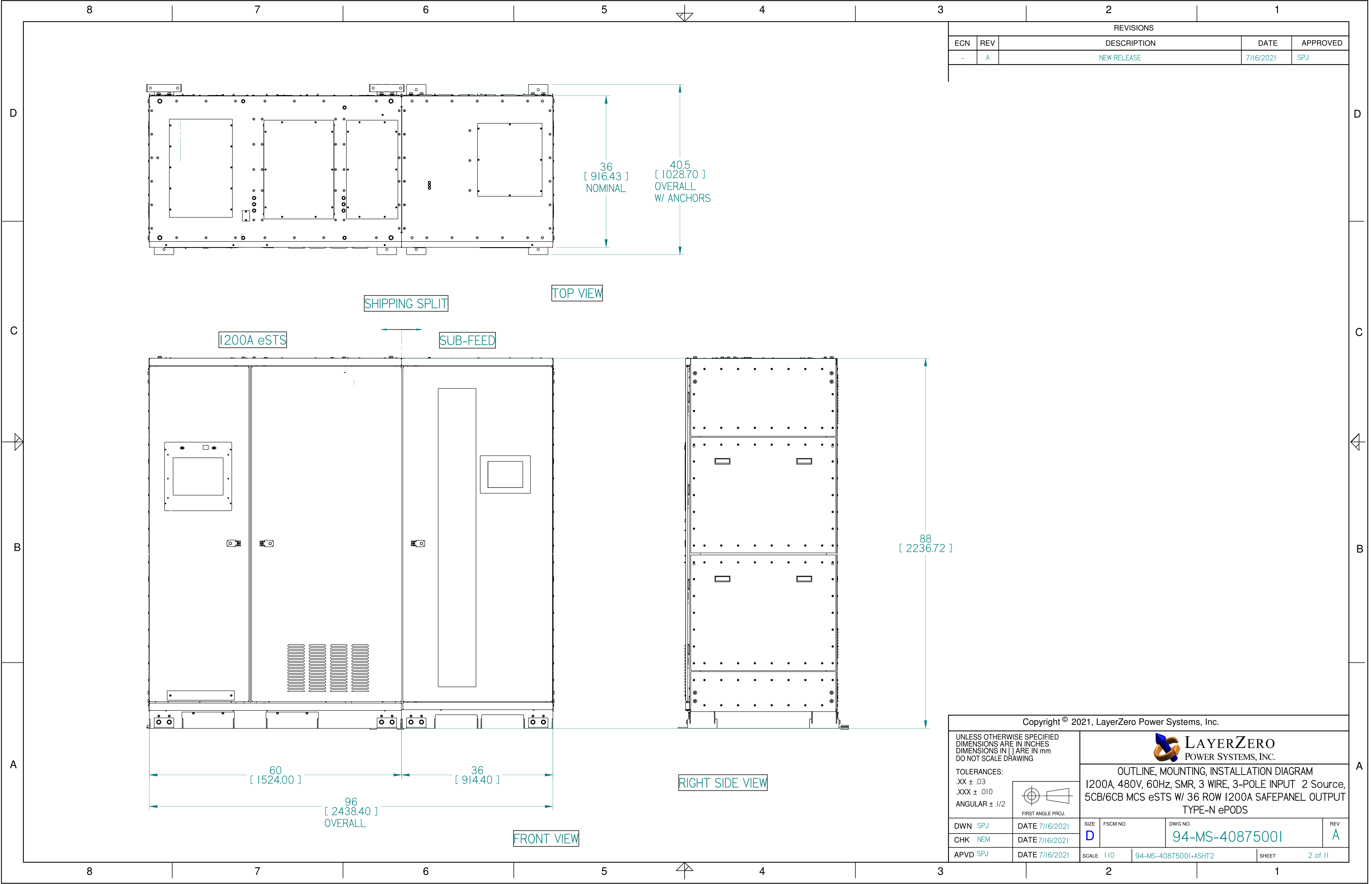


REVISIONS				
ECN	REV	DESCRIPTION	DATE	APPROVED
-	A	NEW RELEASE	7/16/2021	SPJ

Notes:

1. Front access only required for operation and servicing of the Type-N ePODs. Source Inputs load cabling may be wired from either the top or bottom. Output cabling will be provided to mate with ePODs cabinet. Output cabling from the Sub-Feed Cabinet may be wired from either the top or bottom.
2. Sheets 1 through 3 will show the combined Type-N ePODs. Details of the eSTS will be shown on Sheets 4 through 7. Details of the Sub-Feed Cabinet will be shown on Sheets 8 through 10. Optional Seismic Cleat mounts are shown on Sheet 11. There will be one shipping split as shown on Sheet 2. The units are provided with forklift provisions as shown for maneuvering.
3. For the eSTS, with a 277-480V / 1200A / 50-60Hz / SMR/TMR / 3-Pole / 3 Wire configuration: see Sheet 5 for Cable Access Areas and recommended wire size (Table II).
4. See Sheet 5 for anchoring locations of the eSTS. The eSTS is Seismically Qualified per AC156 to Sds Level 2.00/2.50 with z/h = 1, Ip = 1.5. Torque tighten Seismic Brackets shown to floor Anchors at 50lb-ft (108.5N-m).
5. See Sheet 6 for description of internal components. The eSTS can be configured for either 5CB or 6CB as the sixth circuit breaker (CB302) is a redundant Output Circuit Breaker. Customer to specify CB configuration at the time of order. The design will show maximum configuration for (6) circuit breakers with the redundant output circuit breaker. All circuit breakers are Fixed Molded Case Switches.
6. Sheet 6 will show QTY 7 Infrared Portals on the Input/Output Bay deadfront door for thermal imaging of customer cable connections. An optional Insight IR thermal imaging system is available for scanning of Input/Output Cable Connections and internal component connections. Please consult factory if this option is desired.
7. See Sheet 7 for Cable I/O landing locations. Standard QTY4 of 500MCM cable per phase landing in 3IN conduit (QTY12 total) will attach directly to the Access Plates if Entry / Exit from common plate. Landing locations are sized for maximum 900MCM cable whereas 4IN conduit will be used. If larger than 500MCM cable used the Input and Output if split between top and bottom will land directly onto the access plate. If Input on one access area and cable greater than 500MCM consult factory for Junction box to accomodate larger conduit.
8. Sheet 8 will begin detail of the Sub-Feed Cabinet which is configurable on 36 rows of the 1200A SafePanel. Please specify Circuit Breakers at the time of order if desired to be factory installed.
9. A removable filter access plate is mounted on the front door to allow for filter servicing without the need for PPE.
11. Forklift covers are provided and may be installed after final positioning.
12. Optional Seismic Mounting Cleats are available for the rear mounting anchors to slide the unit in from the front if the unit is mounted such that the rear of the cabinet is in close proximity to a wall or other equipment. Please specify option if required at the time of order. See Sheet 11 for detail.
- 13 See One-Line electrical diagram for further detail.

Copyright © 2021, LayerZero Power Systems, Inc.									
UNLESS OTHERWISE SPECIFIED DIMENSIONS ARE IN INCHES DIMENSIONS IN [] ARE IN mm DO NOT SCALE DRAWING									
			OUTLINE, MOUNTING, INSTALLATION DIAGRAM 1200A, 480V, 60Hz, SMR, 3 WIRE, 3-POLE INPUT 2 Source, 5CB/6CB MCS eSTS W/ 36 ROW 1200A SAFEANEL OUTPUT TYPE-N ePODS						
TOLERANCES: .XX ± .03 .XXX ± .010 ANGULAR ± .1/2			DATE 7/16/2021	SIZE D	FSCM NO.	DWG NO. 94-MS-40875001	REV A		
DWN SPJ	DATE 7/16/2021	CHK NEM	DATE 7/16/2021	APVD SPJ	DATE 7/16/2021	SCALE 1:10	94-MS-40875001+ASHT1	SHEET 1 of 11	



REVISIONS				
ECN	REV	DESCRIPTION	DATE	APPROVED
-	A	NEW RELEASE	7/16/2021	SPJ

Copyright © 2021, LayerZero Power Systems, Inc.

UNLESS OTHERWISE SPECIFIED
DIMENSIONS ARE IN INCHES
DIMENSIONS IN [] ARE IN mm
DO NOT SCALE DRAWING

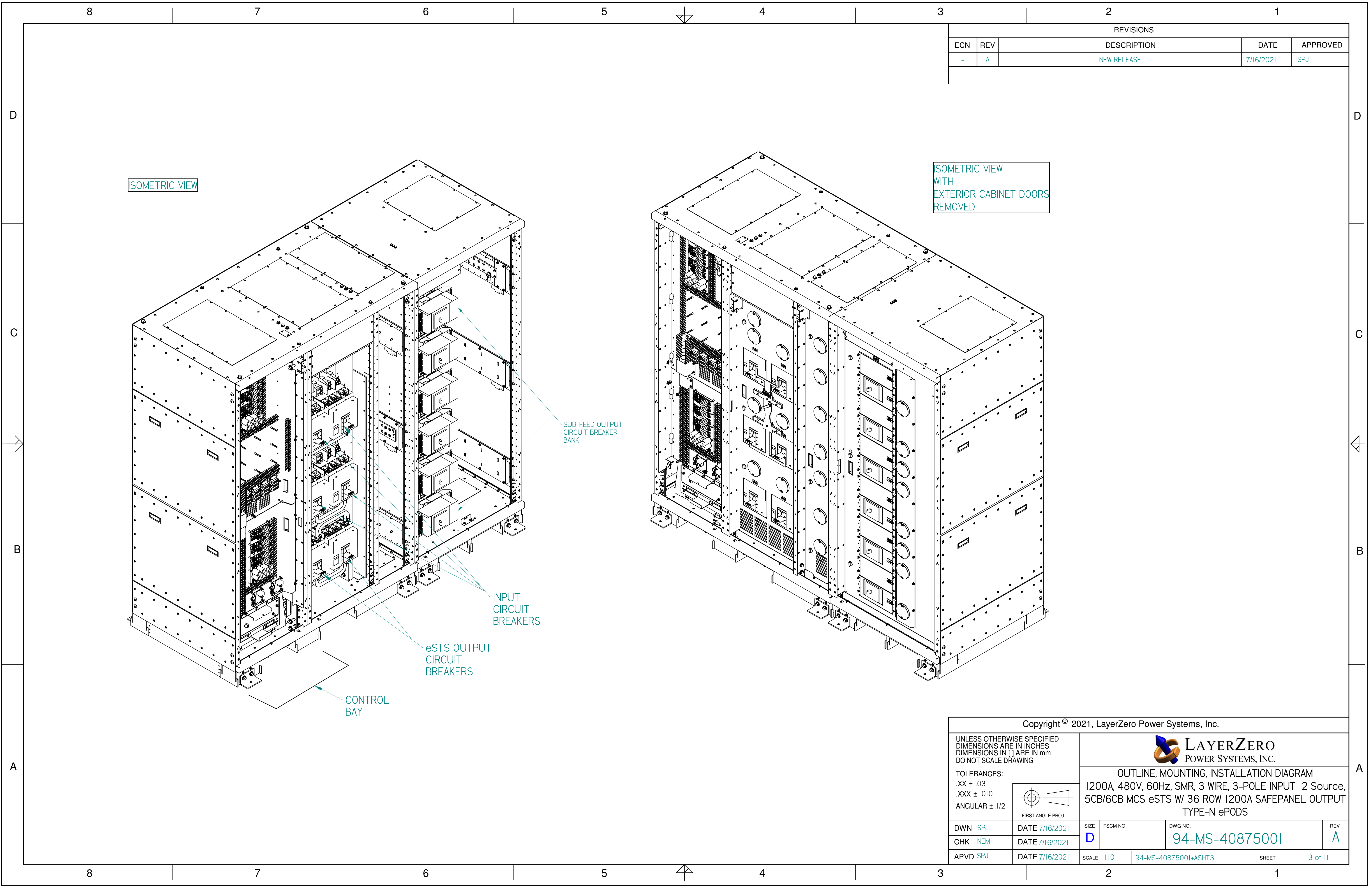
TOLERANCES:
.XX ± .03
.XXX ± .010
ANGULAR ± .1/2

FIRST ANGLE PROJ.

LAYERZERO
POWER SYSTEMS, INC.

OUTLINE, MOUNTING, INSTALLATION DIAGRAM
1200A, 480V, 60Hz, SMR, 3 WIRE, 3-POLE INPUT 2 Source,
5CB/6CB MCS eSTS W/ 36 ROW 1200A SAFEPANEL OUTPUT
TYPE-N ePODS

DWN SPJ	DATE 7/16/2021	SIZE D	FSCM NO.	DWG NO. 94-MS-40875001	REV A
CHK NEM	DATE 7/16/2021	SCALE 1:10		94-MS-40875001+ASHT2	SHEET 2 of 11
APVD SPJ	DATE 7/16/2021				



REVISIONS				
ECN	REV	DESCRIPTION	DATE	APPROVED
-	A	NEW RELEASE	7/16/2021	SPJ

Copyright © 2021, LayerZero Power Systems, Inc.

UNLESS OTHERWISE SPECIFIED
DIMENSIONS ARE IN INCHES
DIMENSIONS IN [] ARE IN mm
DO NOT SCALE DRAWING

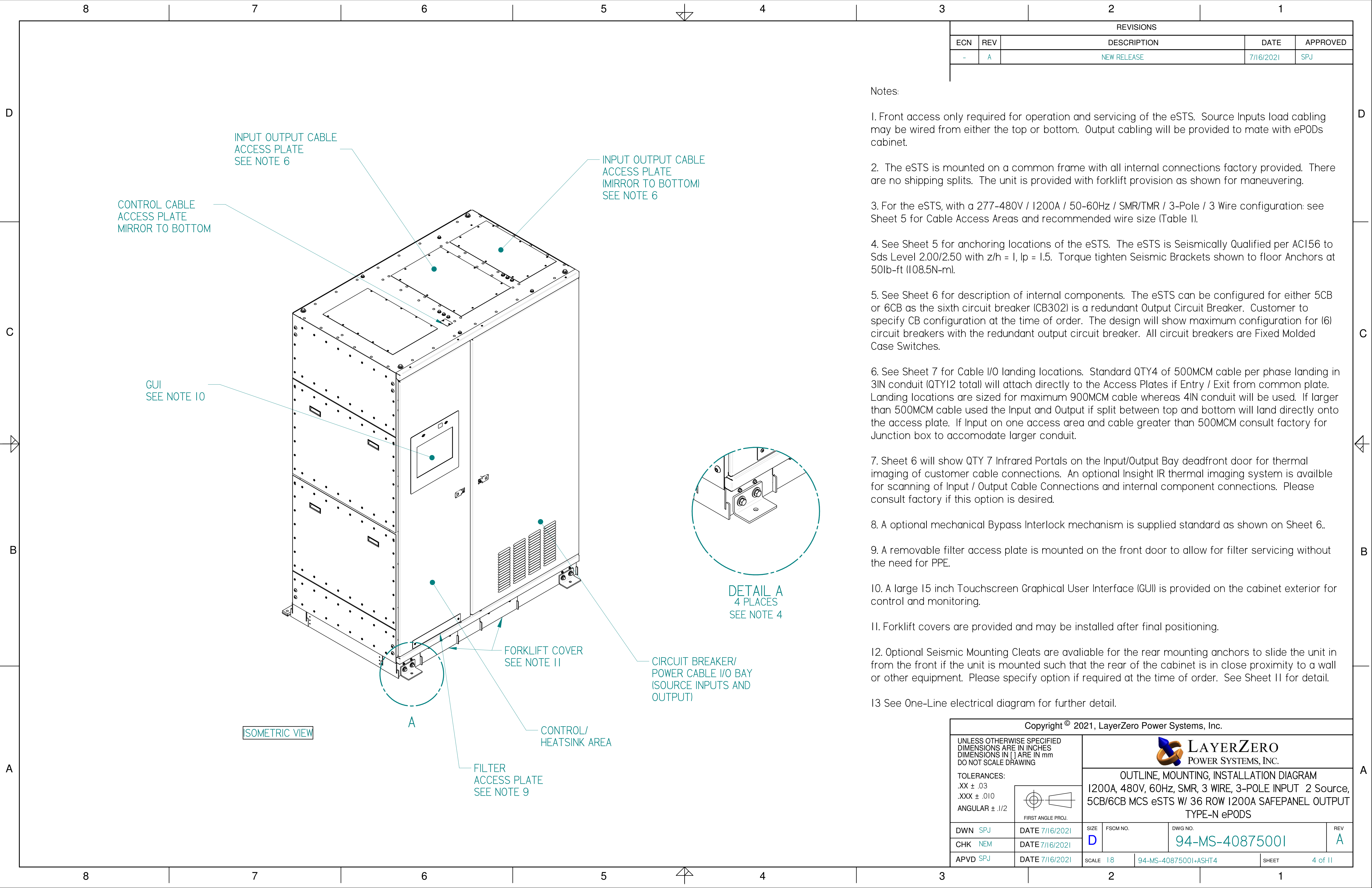
TOLERANCES:
.XX ± .03
.XXX ± .010
ANGULAR ± 1/2

FIRST ANGLE PROJ.

LAYERZERO
POWER SYSTEMS, INC.

OUTLINE, MOUNTING, INSTALLATION DIAGRAM
1200A, 480V, 60Hz, SMR, 3 WIRE, 3-POLE INPUT 2 Source,
5CB/6CB MCS eSTS W/ 36 ROW 1200A SAFEPANEL OUTPUT
TYPE-N ePODS

DWN SPJ	DATE 7/16/2021	SIZE D	FSCM NO.	DWG NO. 94-MS-40875001	REV A
CHK NEM	DATE 7/16/2021	SCALE 1:10		94-MS-40875001+ASHT3	SHEET 3 of 11
APVD SPJ	DATE 7/16/2021				



REVISIONS				
ECN	REV	DESCRIPTION	DATE	APPROVED
-	A	NEW RELEASE	7/16/2021	SPJ

Notes:

1. Front access only required for operation and servicing of the eSTS. Source Inputs load cabling may be wired from either the top or bottom. Output cabling will be provided to mate with ePODs cabinet.
2. The eSTS is mounted on a common frame with all internal connections factory provided. There are no shipping splits. The unit is provided with forklift provision as shown for maneuvering.
3. For the eSTS, with a 277-480V / 1200A / 50-60Hz / SMR/TMR / 3-Pole / 3 Wire configuration: see Sheet 5 for Cable Access Areas and recommended wire size (Table I).
4. See Sheet 5 for anchoring locations of the eSTS. The eSTS is Seismically Qualified per AC156 to Sds Level 2.00/2.50 with z/h = 1, Ip = 1.5. Torque tighten Seismic Brackets shown to floor Anchors at 50lb-ft (108.5N-m).
5. See Sheet 6 for description of internal components. The eSTS can be configured for either 5CB or 6CB as the sixth circuit breaker (CB302) is a redundant Output Circuit Breaker. Customer to specify CB configuration at the time of order. The design will show maximum configuration for (6) circuit breakers with the redundant output circuit breaker. All circuit breakers are Fixed Molded Case Switches.
6. See Sheet 7 for Cable I/O landing locations. Standard QTY4 of 500MCM cable per phase landing in 3IN conduit (QTY12 total) will attach directly to the Access Plates if Entry / Exit from common plate. Landing locations are sized for maximum 900MCM cable whereas 4IN conduit will be used. If larger than 500MCM cable used the Input and Output if split between top and bottom will land directly onto the access plate. If Input on one access area and cable greater than 500MCM consult factory for Junction box to accomodate larger conduit.
7. Sheet 6 will show QTY 7 Infrared Portals on the Input/Output Bay deadfront door for thermal imaging of customer cable connections. An optional Insight IR thermal imaging system is available for scanning of Input / Output Cable Connections and internal component connections. Please consult factory if this option is desired.
8. A optional mechanical Bypass Interlock mechanism is supplied standard as shown on Sheet 6.
9. A removable filter access plate is mounted on the front door to allow for filter servicing without the need for PPE.
10. A large 15 inch Touchscreen Graphical User Interface (GUI) is provided on the cabinet exterior for control and monitoring.
11. Forklift covers are provided and may be installed after final positioning.
12. Optional Seismic Mounting Cleats are available for the rear mounting anchors to slide the unit in from the front if the unit is mounted such that the rear of the cabinet is in close proximity to a wall or other equipment. Please specify option if required at the time of order. See Sheet 11 for detail.
- 13 See One-Line electrical diagram for further detail.

Copyright © 2021, LayerZero Power Systems, Inc.

UNLESS OTHERWISE SPECIFIED
DIMENSIONS ARE IN INCHES
DIMENSIONS IN [] ARE IN mm
DO NOT SCALE DRAWING

TOLERANCES:
.XX ± .03
.XXX ± .010
ANGULAR ± .1/2

FIRST ANGLE PROJ.

DWN

SPJ

CHK

NEM

APVD

SPJ

DATE

7/16/2021

DATE

7/16/2021

DATE

7/16/2021

SIZE

D

SCALE

1:8

DATE

7/16/2021

DATE

7/16/2021

DATE

7/16/2021

DATE

7/16/2021

SIZE

FSCM NO.

DWG NO.

94-MS-40875001

REV

A

94-MS-40875001+ASHT4

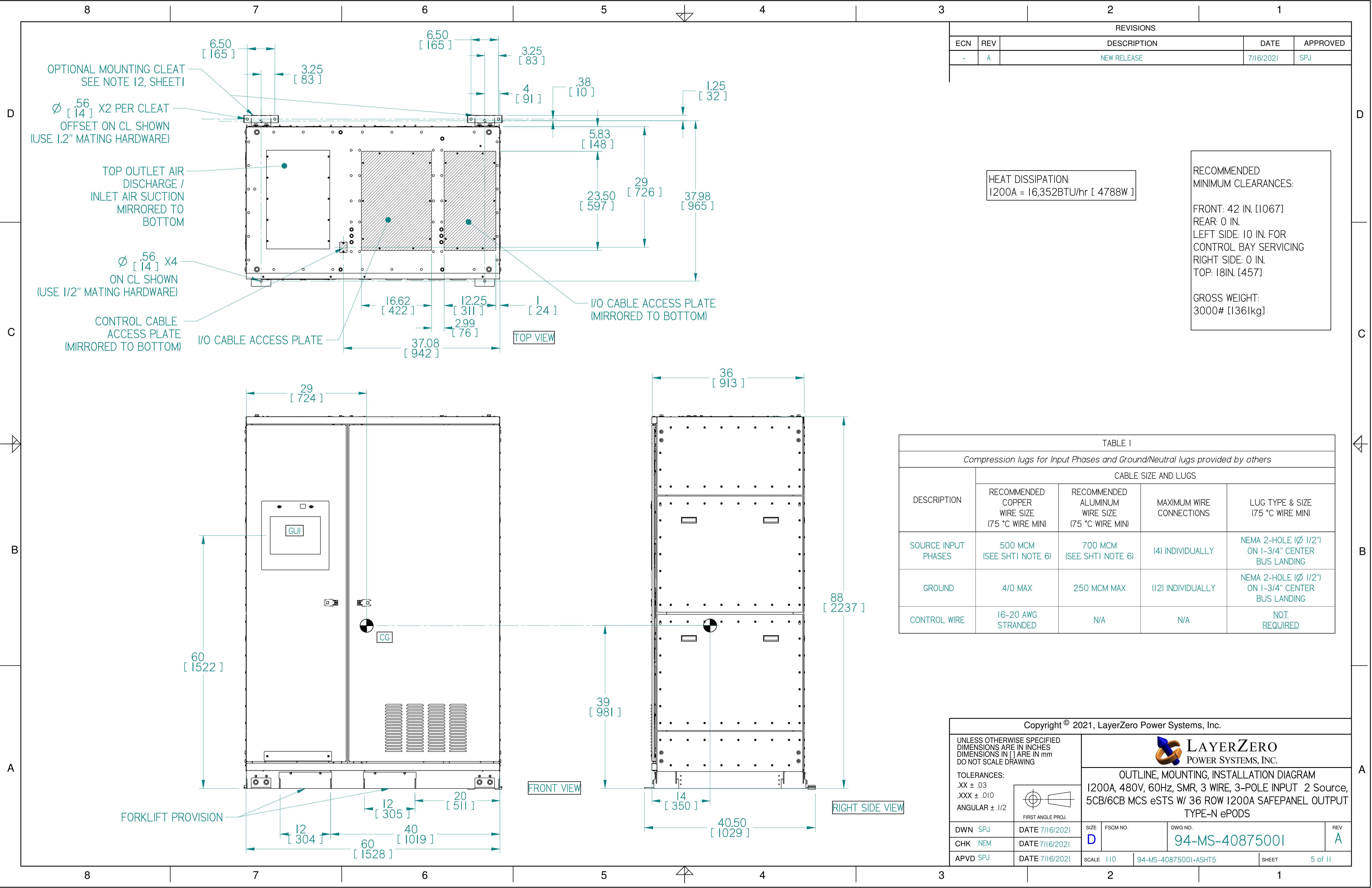
SHEET

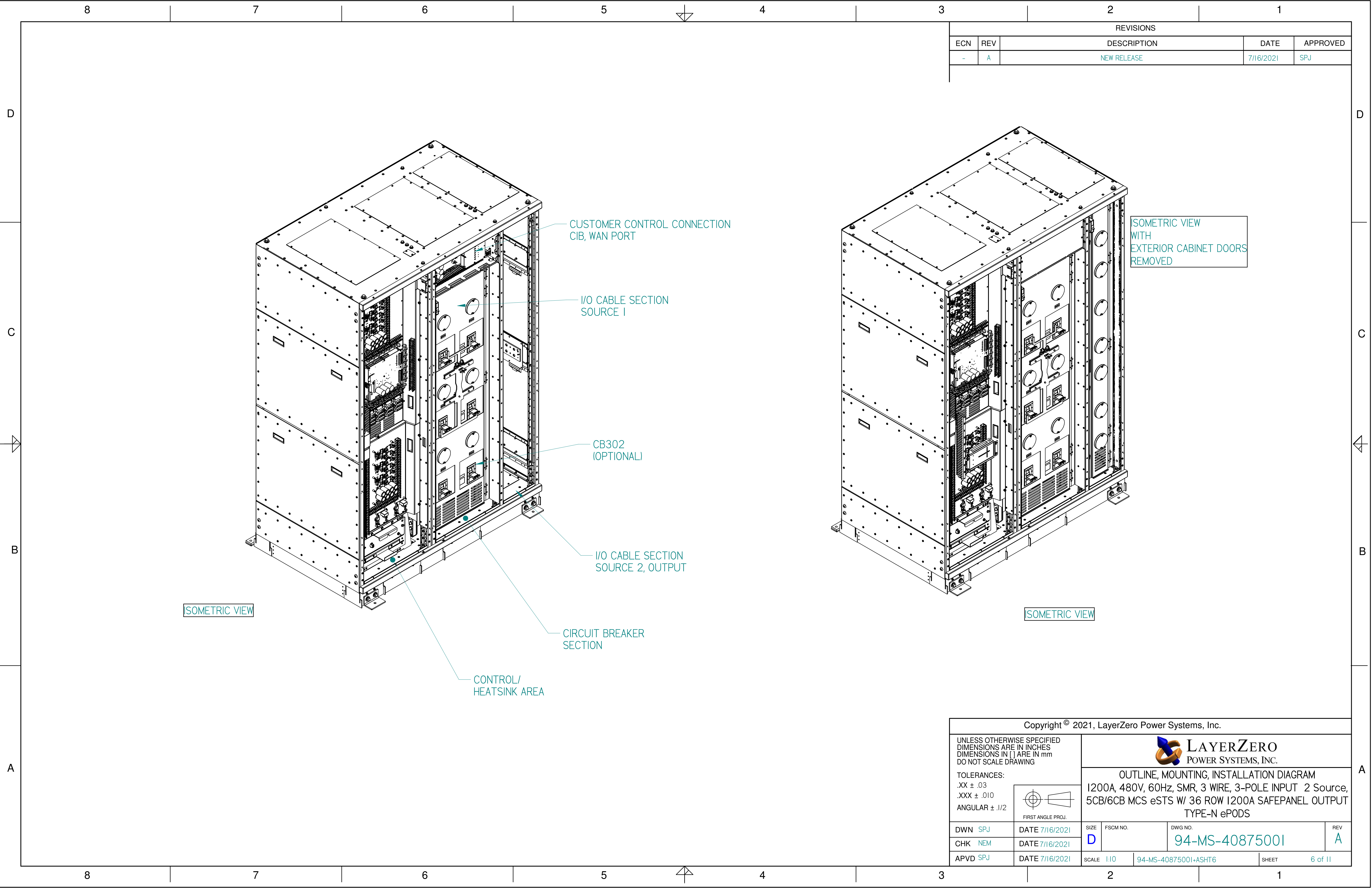
4 of 11

LAYERZERO
POWER SYSTEMS, INC.

OUTLINE, MOUNTING, INSTALLATION DIAGRAM

1200A, 480V, 60Hz, SMR, 3 WIRE, 3-POLE INPUT 2 Source, 5CB/6CB MCS eSTS W/ 36 ROW 1200A SAFEPANEL OUTPUT TYPE-N ePODS





REVISIONS				
ECN	REV	DESCRIPTION	DATE	APPROVED
-	A	NEW RELEASE	7/16/2021	SPJ

Copyright © 2021, LayerZero Power Systems, Inc.

UNLESS OTHERWISE SPECIFIED
DIMENSIONS ARE IN INCHES
DIMENSIONS IN [] ARE IN mm
DO NOT SCALE DRAWING

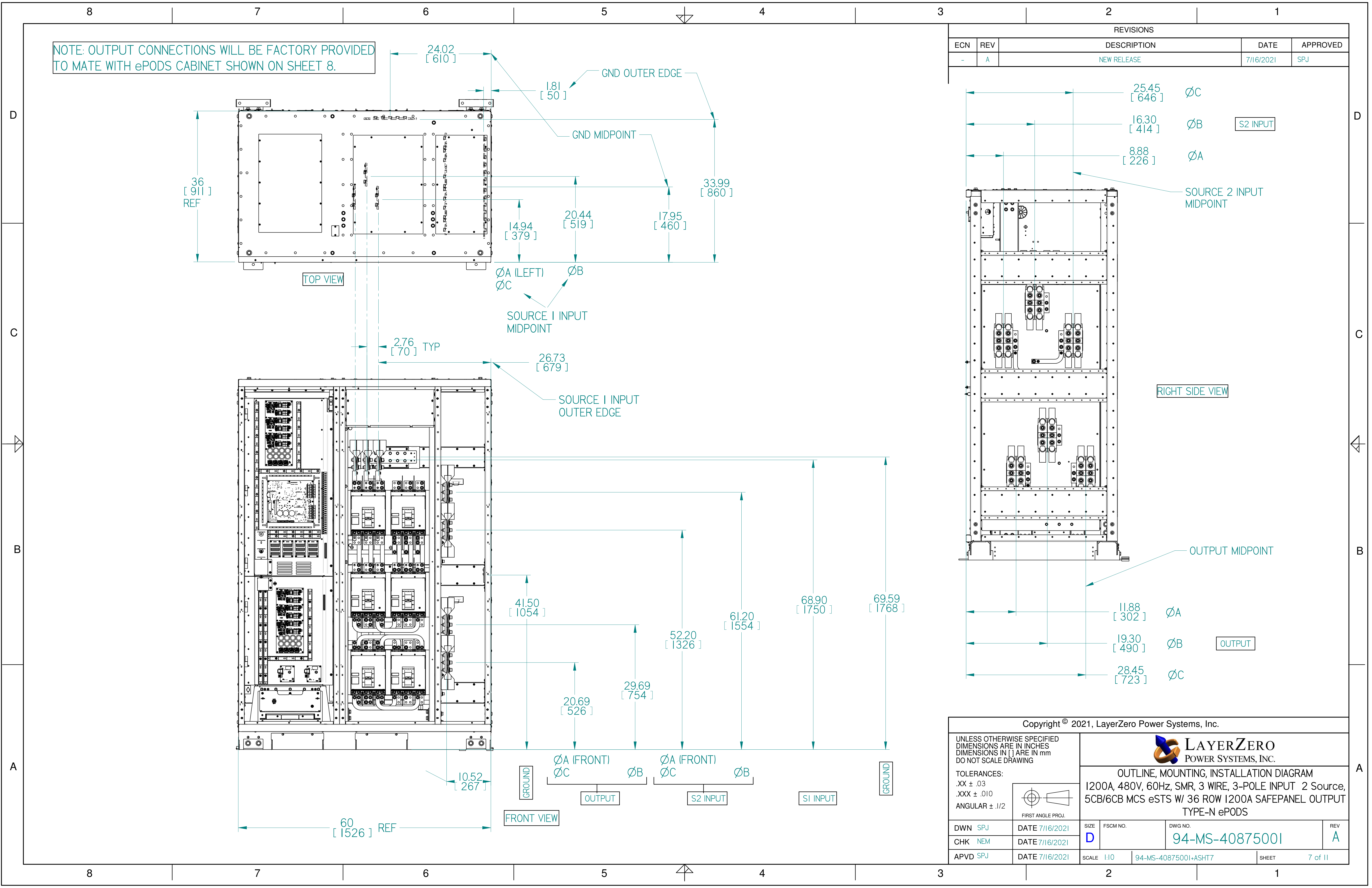
TOLERANCES:
.XX ± .03
.XXX ± .010
ANGULAR ± .1/2

FIRST ANGLE PROJ.

LAYERZERO
POWER SYSTEMS, INC.

OUTLINE, MOUNTING, INSTALLATION DIAGRAM
1200A, 480V, 60Hz, SMR, 3 WIRE, 3-POLE INPUT 2 Source,
5CB/6CB MCS eSTS W/ 36 ROW 1200A SAFEPANEL OUTPUT
TYPE-N ePODS

DWN SPJ	DATE 7/16/2021	SIZE D	FSCM NO.	DWG NO. 94-MS-40875001	REV A
CHK NEM	DATE 7/16/2021	SCALE 1:10	94-MS-40875001+ASHT6	SHEET 6 of 11	
APVD SPJ	DATE 7/16/2021				



REVISIONS				
ECN	REV	DESCRIPTION	DATE	APPROVED
-	A	NEW RELEASE	7/16/2021	SPJ

Copyright © 2021, LayerZero Power Systems, Inc.

UNLESS OTHERWISE SPECIFIED
DIMENSIONS ARE IN INCHES
DIMENSIONS IN [] ARE IN mm
DO NOT SCALE DRAWING

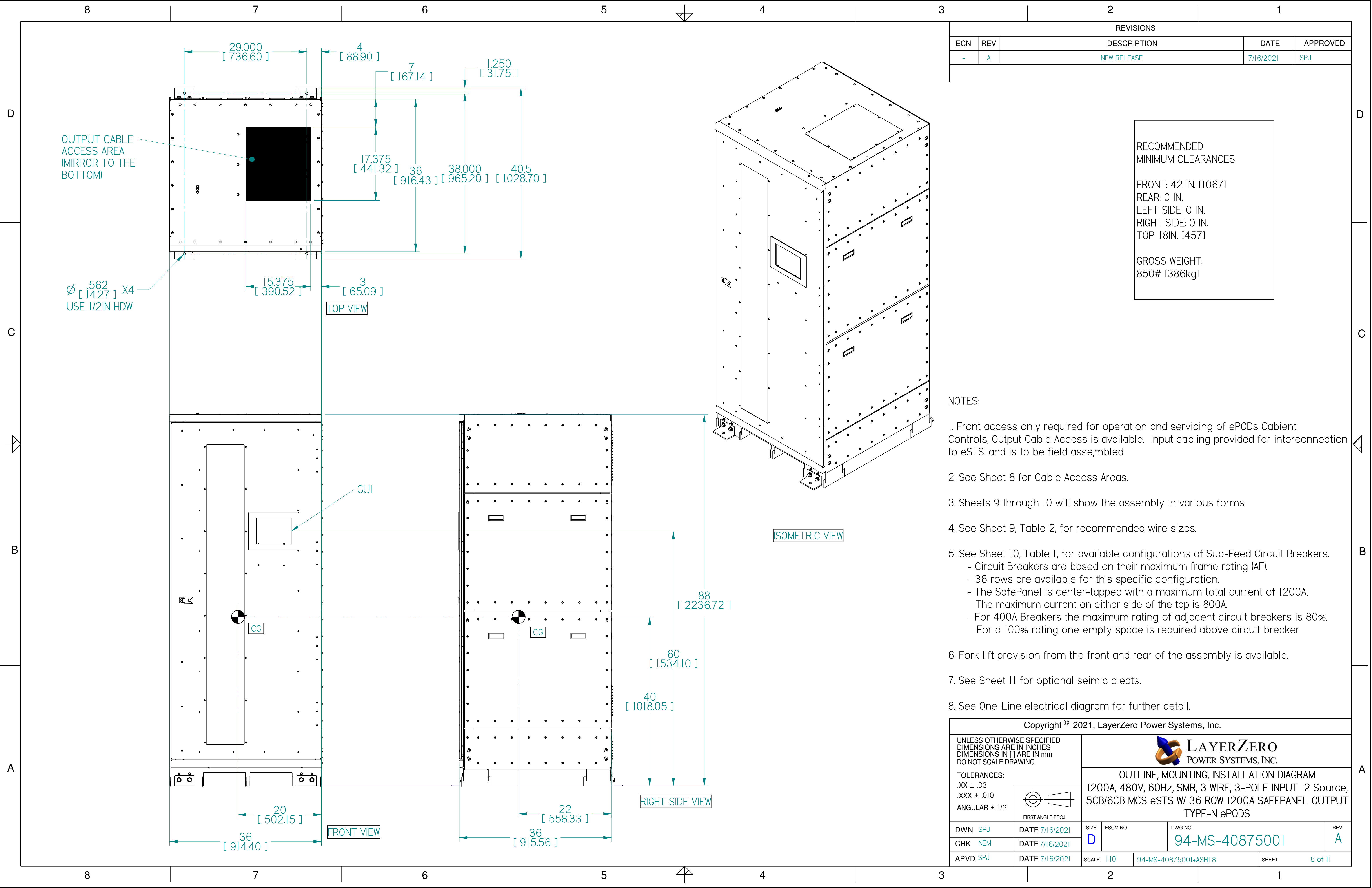
TOLERANCES:
.XX ± .03
.XXX ± .010
ANGULAR ± .1/2

FIRST ANGLE PROJ.

LAYERZERO
POWER SYSTEMS, INC.

OUTLINE, MOUNTING, INSTALLATION DIAGRAM
1200A, 480V, 60Hz, SMR, 3 WIRE, 3-POLE INPUT 2 Source,
5CB/6CB MCS eSTS W/ 36 ROW 1200A SAFEPANEL OUTPUT
TYPE-N ePODS

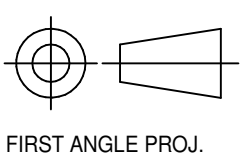
DWN SPJ	DATE 7/16/2021	SIZE D	FSCM NO.	DWG NO. 94-MS-40875001	REV A
CHK NEM	DATE 7/16/2021	SCALE 1:10		94-MS-40875001+ASHT7	SHEET 7 of 11
APVD SPJ	DATE 7/16/2021				




Copyright © 2021, LayerZero Power Systems, Inc.

UNLESS OTHERWISE SPECIFIED
DIMENSIONS ARE IN INCHES
DIMENSIONS IN [] ARE IN mm
DO NOT SCALE DRAWING

TOLERANCES:
.XX ± .03
.XXX ± .010
ANGULAR ± .1/2



FIRST ANGLE PROJ.

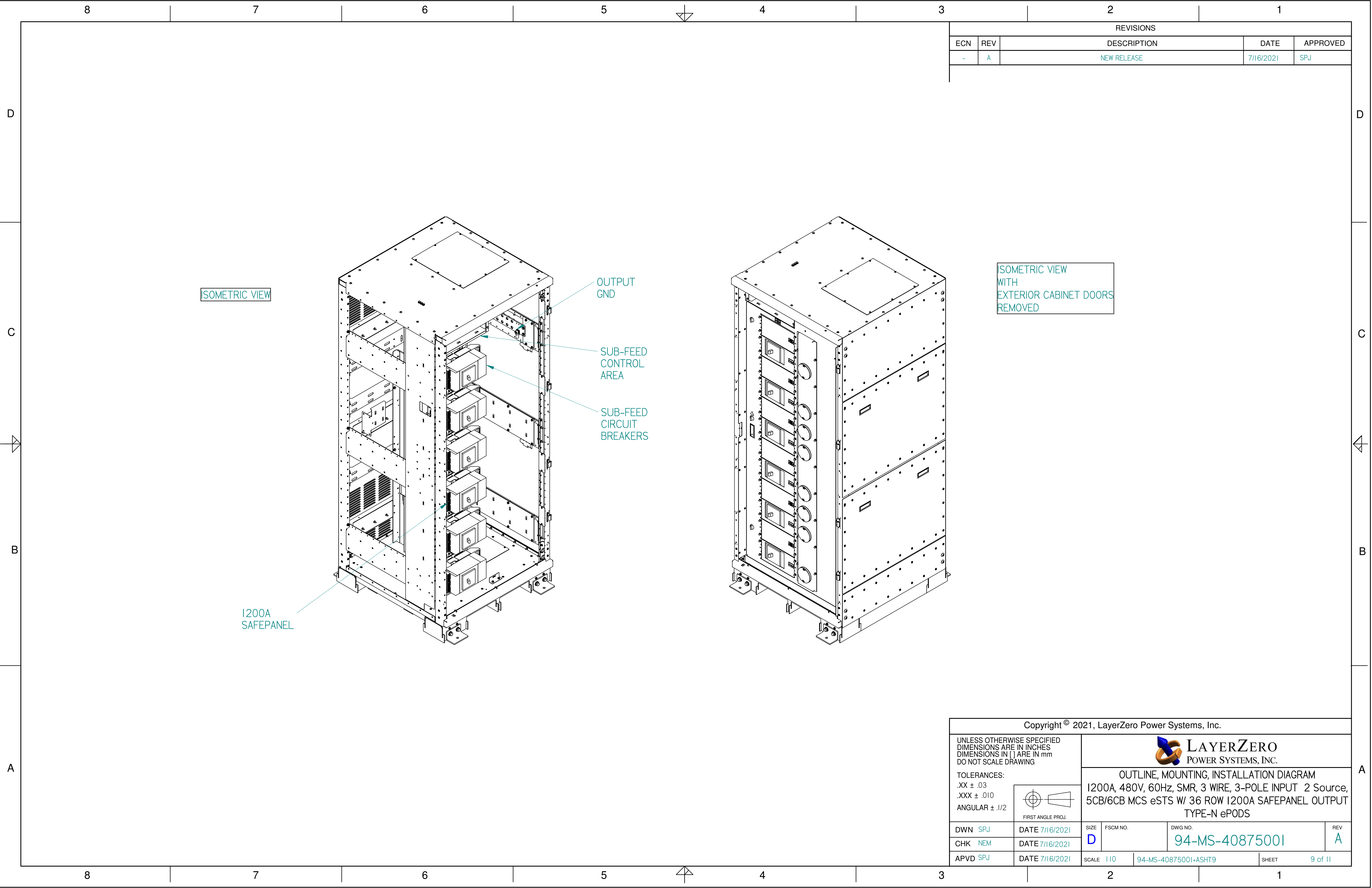


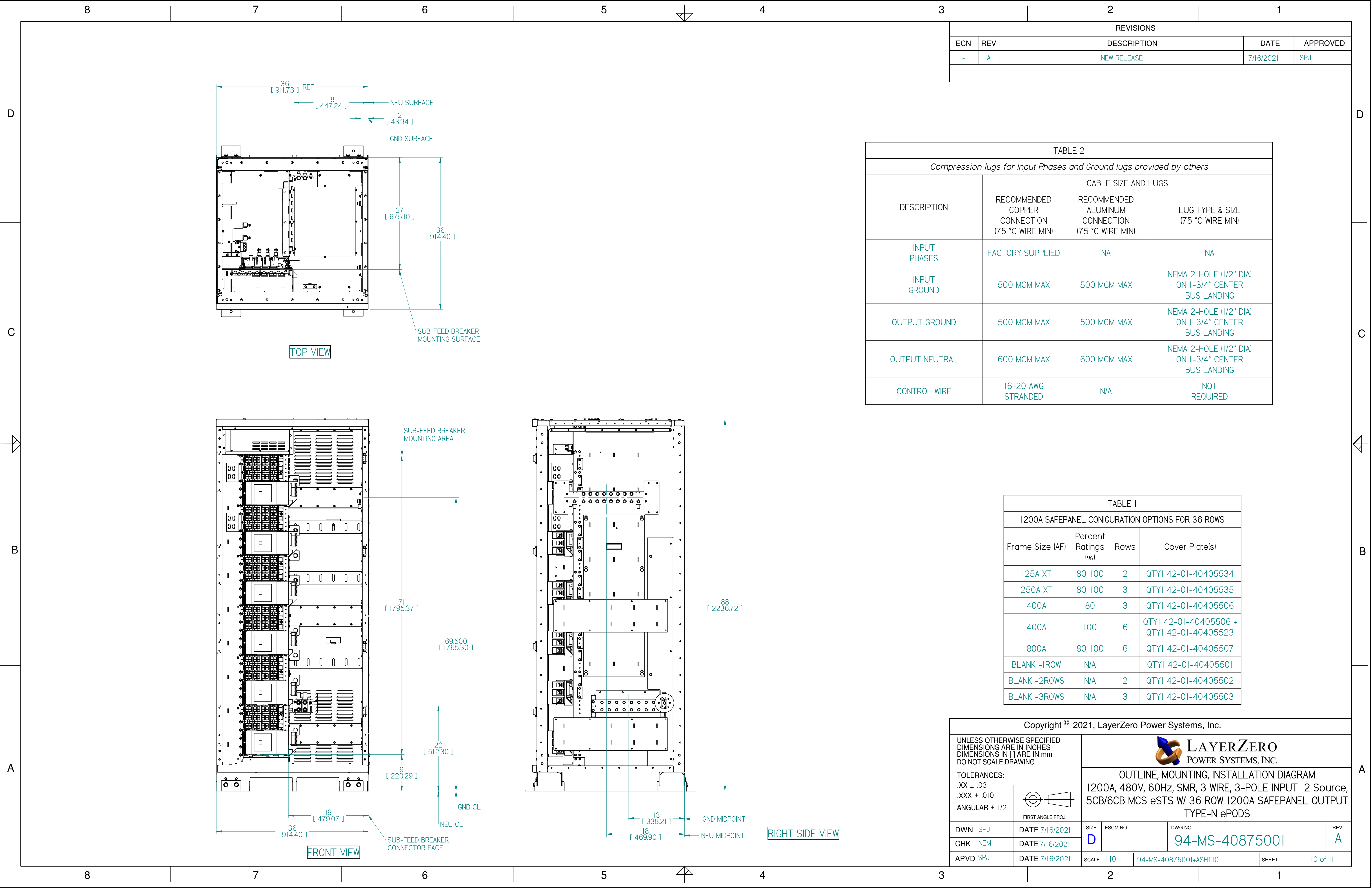
LAYERZERO
POWER SYSTEMS, INC.

OUTLINE, MOUNTING, INSTALLATION DIAGRAM

1200A, 480V, 60Hz, SMR, 3 WIRE, 3-POLE INPUT 2 Source, 5CB/6CB MCS eSTS W/ 36 ROW 1200A SAFEANEL OUTPUT TYPE-N ePODS

DWN SPJ	DATE 7/16/2021	SIZE D	FSCM NO.	DWG NO. 94-MS-40875001	REV A
CHK NEM	DATE 7/16/2021	SCALE 1:10		94-MS-40875001+ASHT8	SHEET 8 of 11
APVD SPJ	DATE 7/16/2021				





REVISIONS				
ECN	REV	DESCRIPTION	DATE	APPROVED
-	A	NEW RELEASE	7/16/2021	SPJ

TABLE 2			
Compression lugs for Input Phases and Ground lugs provided by others			
DESCRIPTION	CABLE SIZE AND LUGS		
	RECOMMENDED COPPER CONNECTION (75 °C WIRE MINI)	RECOMMENDED ALUMINUM CONNECTION (75 °C WIRE MINI)	LUG TYPE & SIZE (75 °C WIRE MINI)
INPUT PHASES	FACTORY SUPPLIED	NA	NA
INPUT GROUND	500 MCM MAX	500 MCM MAX	NEMA 2-HOLE (1/2" DIA) ON 1-3/4" CENTER BUS LANDING
OUTPUT GROUND	500 MCM MAX	500 MCM MAX	NEMA 2-HOLE (1/2" DIA) ON 1-3/4" CENTER BUS LANDING
OUTPUT NEUTRAL	600 MCM MAX	600 MCM MAX	NEMA 2-HOLE (1/2" DIA) ON 1-3/4" CENTER BUS LANDING
CONTROL WIRE	16-20 AWG STRANDED	N/A	NOT REQUIRED

TABLE I			
1200A SAFEPANEL CONFIGURATION OPTIONS FOR 36 ROWS			
Frame Size (IAF)	Percent Ratings (%)	Rows	Cover Plate(s)
125A XT	80, 100	2	QTY1 42-01-40405534
250A XT	80, 100	3	QTY1 42-01-40405535
400A	80	3	QTY1 42-01-40405506
400A	100	6	QTY1 42-01-40405506 + QTY1 42-01-40405523
800A	80, 100	6	QTY1 42-01-40405507
BLANK -1ROW	N/A	1	QTY1 42-01-40405501
BLANK -2ROWS	N/A	2	QTY1 42-01-40405502
BLANK -3ROWS	N/A	3	QTY1 42-01-40405503

Copyright © 2021, LayerZero Power Systems, Inc.

UNLESS OTHERWISE SPECIFIED
DIMENSIONS ARE IN INCHES
DIMENSIONS IN [] ARE IN mm
DO NOT SCALE DRAWING

TOLERANCES:
.XX ± .03
.XXX ± .010
ANGULAR ± .1/2

FIRST ANGLE PROJ.

DWN SPJ
CHK NEM
APVD SPJ

DATE 7/16/2021
DATE 7/16/2021
DATE 7/16/2021

LAYERZERO
POWER SYSTEMS, INC.

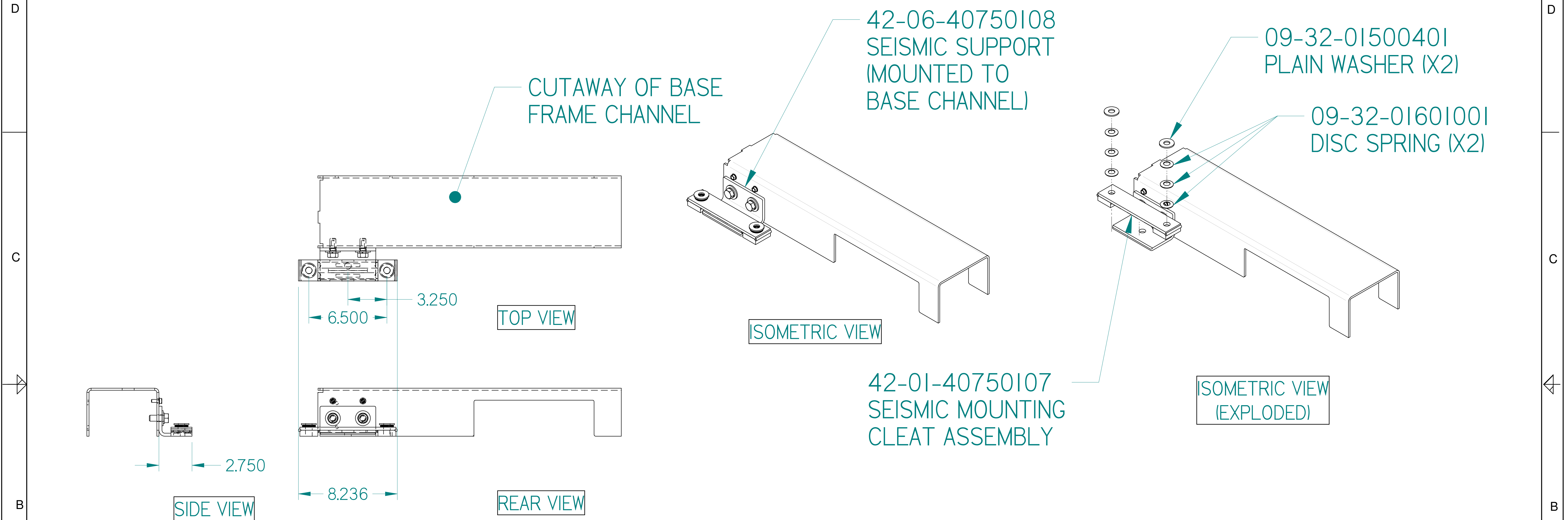
OUTLINE, MOUNTING, INSTALLATION DIAGRAM
1200A, 480V, 60Hz, SMR, 3 WIRE, 3-POLE INPUT 2 Source,
5CB/6CB MCS eSTS W/ 36 ROW 1200A SAFEPANEL OUTPUT
TYPE-N ePODS

SIZE	FSCM NO.	DWG NO.	REV
D		94-MS-40875001	A

SCALE	I:10	94-MS-40875001+ASHT10	SHEET	10 of 11
-------	------	-----------------------	-------	----------


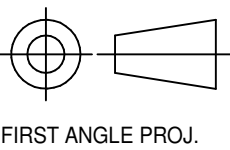
42-00-40750107 SEISMIC MOUNTING CLEAT ASSEMBLY INSTRUCTION

REVISIONS				
ECN	REV	DESCRIPTION	DATE	APPROVED
-	A	NEW RELEASE	7/16/2021	SPJ



NOTES:

1. THE FOLLOWING IS TO BE USED AS A GUIDE TO INSTALL SEISMIC MOUNTING CLEATS ON LAYERZERO CABINETS. THE CLEATS ARE USED WHERE REAR ACCESS IS UNAVAILABLE AFTER FINAL INSTALLATION.
2. CLEATS WILL BE PROVIDED FOR ALL REAR SEISMIC SUPPORTS.
3. THE SEISMIC ENGINEER AT THE SITE WILL DETERMINE THE TYPES OF ANCHORS TO BE USED AND 2 ANCHORS ARE NEEDED PER CLEAT.
4. THE CLEATS ARE SIZED FOR 1/2IN (12mm) SEISMIC ANCHORS WITH A REQUIRED TORQUE FO 50LB-FT (67.69Nm).
5. LOCATE THE CLEATS OFF OF THE CENTERLINE OF THE 42-06-40750108 SEISMIC SUPPORTS ON THE BASE CHANNEL AS SHOWN IN THE TOP AND SIDE VIEWS.
6. AFTER ANCHOR STUDS OR WELLS ARE INSTALLED INTO THE FLOOR MOUNT THE 42-01-40750107 SEISMIC MOUNTING CLEAT ASSEMBLY WITH DISC SPRINGS AND PLAIN WASHERS AS SHOWN IN THE EPLoded ISOMETRIC VIEW.
7. TORQUE TIGHTEN ANCHORAGE TO 50LB-FT (67.79Nm) OF TORQUE.
8. INSTALL CABINET BY SLIDING THE UNIT IN WITH THE SEISMIC SUPPORTS UNDERNEATH THE SEISMIC CLEATS. COMPLETE INSTALLATION WITH ANCHORAGE OF THE FRONT SEISMIC SUPPORTS TO TEH GROUND.

Copyright © 2021, LayerZero Power Systems, Inc.				
UNLESS OTHERWISE SPECIFIED DIMENSIONS ARE IN INCHES DIMENSIONS IN [] ARE IN mm DO NOT SCALE DRAWING		 LAYERZERO POWER SYSTEMS, INC.		
		OUTLINE, MOUNTING, INSTALLATION DIAGRAM 1200A, 480V, 60Hz, SMR, 3 WIRE, 3-POLE INPUT 2 Source, 5CB/6CB MCS eSTS w/ 36 ROW 1200A SAFEPANEL OUTPUT TYPE-N ePODS		
TOLERANCES: .XX ± .03 .XXX ± .010 ANGULAR ± .1/2	 FIRST ANGLE PROJ.	SIZE	FSCM NO.	DWG NO.
DWN SPJ	DATE 7/16/2021	D		94-MS-40875001
CHK NEM	DATE 7/16/2021			REV A
APVD SPJ	DATE 7/16/2021	SCALE 1:1	94-MS-40875001+ASHT11	SHEET 11 of 11