

| REVISIONS | | | | |
|-----------|-----|-------------|----------|----------|
| ECN | REV | DESCRIPTION | DATE | APPROVED |
| - | A | NEW RELEASE | 1/7/2021 | SPJ |

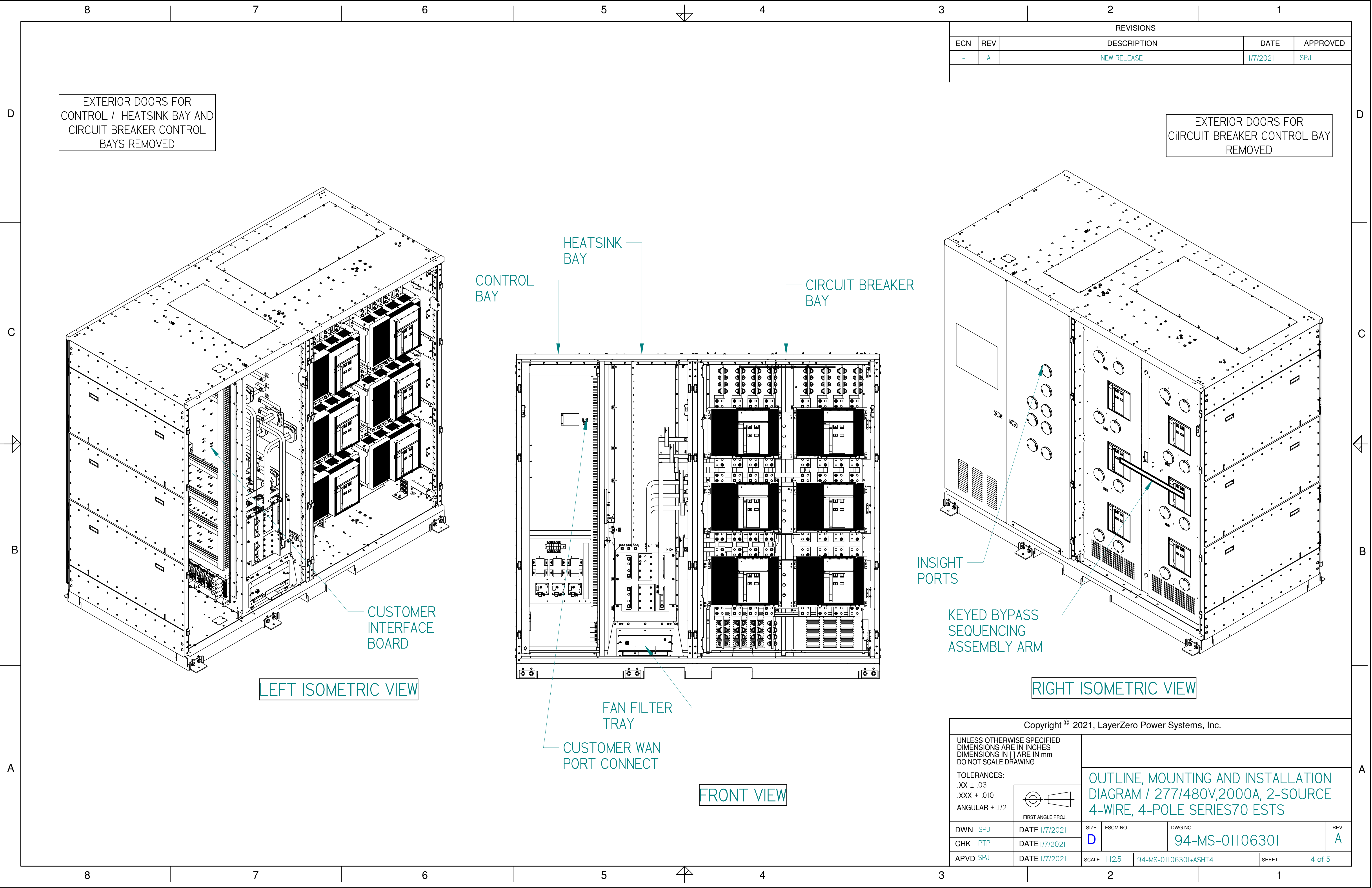
RECOMMENDED
MINIMUM
CLEARANCES:
FRONT: 42 IN. [1067]
REAR: 42 IN. [1067]
SIDES: 0 IN.
TOP: 18 IN. [457]

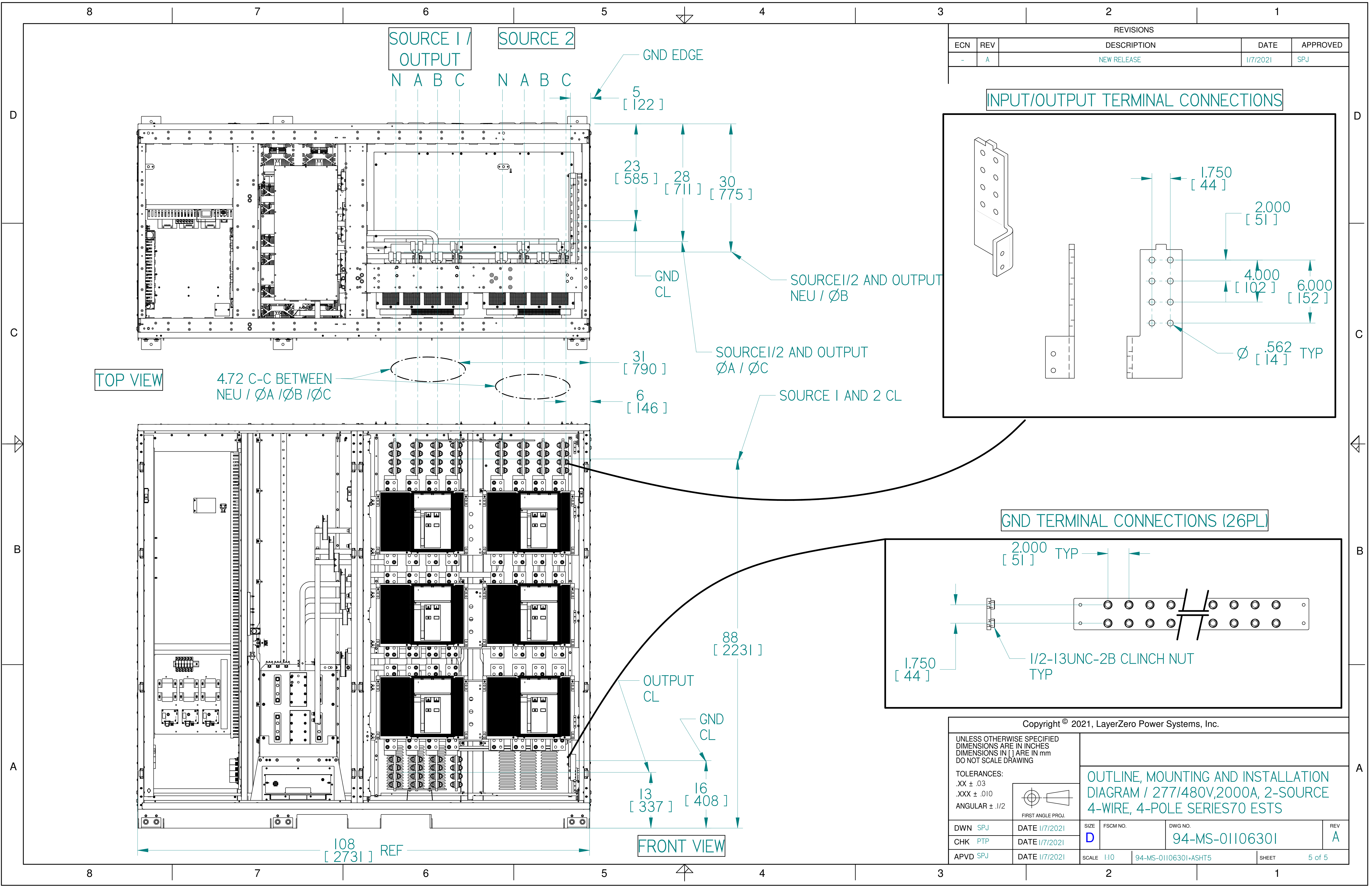
GROSS WEIGHT:
5,600# [2540kg]

| TABLE I | | | |
|--|--|--|---|
| Compression lugs for Input Phases and Ground/Neutral lugs provided by others | | | |
| DESCRIPTION | CABLE SIZE AND LUGS | | |
| | RECOMMENDED COPPER WIRE SIZE (75 °C WIRE MIN) | RECOMMENDED ALUMINUM WIRE SIZE (75 °C WIRE MIN) | LUG TYPE & SIZE (75 °C WIRE MIN) |
| SOURCE INPUT / OUTPUT | 600 MCM MAX | 750 MCM MAX | NEMA 2-HOLE (Ø 1/2") ON 1-3/4" CENTER BUS LANDING |
| GROUND BUS (COMBINED INPUT & OUTPUT) | 500 MCM MAX | 700 MCM MAX | NEMA 2-HOLE (Ø 1/2") ON 1-3/4" CENTER BUS LANDING |
| CONTROL WIRE | 16-20 AWG STRANDED | N/A | NOT REQUIRED |

NOTES:
I. SEE SHEET 5 FOR BUS TERMINAL DETAIL

| Copyright © 2021, LayerZero Power Systems, Inc. | | | | | |
|---|-------------------|--|----------------------|---------------------------|----------|
| UNLESS OTHERWISE SPECIFIED DIMENSIONS ARE IN INCHES DIMENSIONS IN [] ARE IN mm DO NOT SCALE DRAWING | | OUTLINE, MOUNTING AND INSTALLATION DIAGRAM / 277/480V,2000A, 2-SOURCE 4-WIRE, 4-POLE SERIES70 ESTS | | | |
| | | | | | |
| TOLERANCES: .XX ± .03 .XXX ± .010 ANGULAR ± .1/2 | FIRST ANGLE PROJ. | SIZE D | FSCM NO. | DWG NO. 94-MS-01106301 | REV A |
| DWN SPJ | DATE 1/7/2021 | SCALE 1:10 | 94-MS-01106301-ASHT3 | SHEET | 3 of 5 |
| CHK PTP | DATE 1/7/2021 | | | | |
| APVD SPJ | DATE 1/7/2021 | | | | |





| REVISIONS | | | | |
|-----------|-----|-------------|----------|----------|
| ECN | REV | DESCRIPTION | DATE | APPROVED |
| - | A | NEW RELEASE | 1/7/2021 | SPJ |

INPUT/OUTPUT TERMINAL CONNECTIONS

1.750 [44]
2.000 [51]
4.000 [102]
6.000 [152]
Ø .562 [14] TYP

GND TERMINAL CONNECTIONS (26PL)

2.000 [51] TYP
1.750 [44]
1/2-13UNC-2B CLINCH NUT TYP

Copyright © 2021, LayerZero Power Systems, Inc.

UNLESS OTHERWISE SPECIFIED
DIMENSIONS ARE IN INCHES
DIMENSIONS IN [] ARE IN mm
DO NOT SCALE DRAWING

TOLERANCES:
.XX ± .03
.XXX ± .010
ANGULAR ± 1/2

FIRST ANGLE PROJ.

| | | | | | |
|----------|---------------|----------------------|----------|------------------------|--------------|
| DWN SPJ | DATE 1/7/2021 | SIZE D | FSCM NO. | DWG NO. 94-MS-01106301 | REV A |
| CHK PTP | DATE 1/7/2021 | 94-MS-01106301-ASHT5 | | | SHEET 5 of 5 |
| APVD SPJ | DATE 1/7/2021 | 94-MS-01106301-ASHT5 | | | SHEET 5 of 5 |

OUTLINE, MOUNTING AND INSTALLATION
DIAGRAM / 277/480V,2000A, 2-SOURCE
4-WIRE, 4-POLE SERIES70 ESTS